

03

# AUTOMATIZACIÓN Y CONTROL

## AUTOMATION & CONTROL



**Válvulas de esfera, retención, mariposa,  
grifos de nivel, toma muestras, para el sector  
alimentario, vitivinícola, farmacéutico.**

Ball valves, check valves, Butterfly valves, upper  
level cock and sampling valves for the food, wine,  
oil and pharmaceutical industries.

## AUTOMATIZACIÓN Y CONTROL

### AUTOMATION & CONTROL

#### VÁLVULAS EQUIPADAS CON ACTUADOR NEUMÁTICO ROTATIVO GIRO 90º SIMPLE EFECTO Y DOBLE EFECTO PARA ACCIONAMIENTO AUTOMÁTICO Y A DISTANCIA

##### ● Características de los actuadores

Actuadores neumáticos con piñón y cremallera cuarto de vuelta (90º).

Toda la serie de actuadores han sido proyectados según las normas NAMUR, VDI/VDE 3845 e ISO 5211.

Pueden ser accionados con aire comprimido o gases no corrosivos a presión de 8 y 10 bar según modelo.

##### ● Tipos de actuadores

D.A. • Doble efecto  
• Presión aire para abrir y cerrar

S.R. • Simple efecto N.A.  
• Presión aire para cerrar válvula  
• Normal abierto  
• Retorno a posición abierta por muelles

S.R. • Simple efecto N.C.  
• Presión aire para abrir válvula  
• Normal cerrado  
• Retorno a posición cerrada por muelles

##### ● Modelos de actuadores

GN / GN-S. Aluminio extrusionado ASTM 6005 con anodizado exterior e interior. Presión de 4 a 10 bar. Temperatura: -20°C +80°C.

GNP / GNP-S. Cuerpo y tapas en aleación de aluminio anodizado y posterior recubrimiento externo con pintura de poliéster en polvo para resistencia a la corrosión. Presión de trabajo de 2,5 a 8 bar. Temperatura de trabajo -20°C + 80°C.

Homologación ATEX. Según Directiva 94/9/CE para atmósferas explosivas: Categoría II2 GDT5 (Zona 1,2/ 21,22).

##### ● Notas importantes

Los equipos actuador/válvula que presentamos en esta tarifa, corresponden a las siguientes condiciones de trabajo:

Líquidos limpios y no agresivos.  
Presión diferencial máx.: 16 Kgs./cm2.  
Presión de alimentación mínima: 6 Bar.

Para otras condiciones de trabajo, rogamos nos consulten.

##### ● Dispositivos de control - Opcionales

Mando manual de emergencia.  
Electroválvulas 3 y 5 vías "Namur" IP-65.  
Finales de carrera (Electromecánicos- Inductivos).  
Posicionadores neumáticos, señal 3-15 psi.  
Posicionadores electroneumáticos, señal 4-20 mA.

#### VALVES EQUIPPED WITH 90º ROTATION PNEUMATIC ACTUATOR, SPRING RETURN AND DOUBLE ACTING FOR AUTOMATIC AND REMOTE OPERATION

##### ● Characteristics of the actuators

Pneumatic actuators with rack and pinion quarter turn (90º). The whole actuator series has been projected according to the standard NAMUR, VDI/VDE 3845 and ISO 5211. They can be operated with compressed air or any other non-corrosive gases under pressure of 8 and 10 bars according to the model.

##### ● Type of actuators

D.A. • Double acting  
• Air pressure for opening and closing

S.R. • Spring Return NA  
• Air pressure for closing valve  
• Normal open  
• Return to open position with springs

S.R. • Spring Return NC  
• Air pressure for opening valve  
• Normal closed  
• Return to closed position with springs

##### ● Actuator models

GN / GN-S. Extruded aluminium ASTM 6005 with all internal and external surfaces anodized for corrosion resistance. Except for Mod. GN10 and GN 10/S. Technopolymer construction with aluminium end. Pressure from 4 to 10 bar. Temperature from -20°C to +80°C.

GNP / GNP-S. Aluminium alloy body and caps with all anodized surface and external surface with powder polyester painted for corrosion resistance. Working pressure from 2.5 to 8 bar. Working temperature -20°C + 80°C. ATEX certification according. To 94/ 9/ CE for explosives atmospheres: Class II2 GDT5 (Zones 1,2/ 21, 22).

##### ● Important

The actuator / valve equipment that we present in this PRICE LIST are suitable for the following working conditions:

Clean, non-aggressive liquids.  
Differential pressure max. 16 kg/cm2.  
Minimum feed pressure: 6 bar.

For other working conditions, please contact us.

##### ● Safety devices - Optional

Manual emergency control.  
3 and 5 way "Namur" solenoid valve IP-65.  
Microswitches (Electromechanical- Inductive).  
Pneumatic positioners, signal 3-15 psi.  
Electropneumatic positioners, signal 4-20 mA.

CÓDIGO CODE	MEDIDA SIZE	PESO WEIGHT	P.V.P. € PRICE €
----------------	----------------	----------------	---------------------

Ref. 5060 - 5060N



**Válvula asiento inclinado con actuador neumático de simple efecto**

También disponible con rosca NPT (5060N). Extremos rosca gas ISO 228-1, PN-16. Const.: acero inox. AISI 316 microfundición. Junta actuador: NBR. Presión mando. Actuador: 3-10 kg/cm2. Rango temp. trabajo: -10°C +180°C.

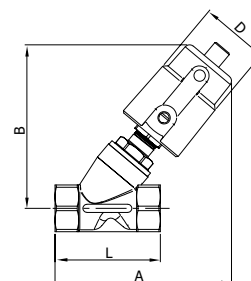
**Slanted seat valve with spring return actuator**

Also available in NPT thread ISO 228-1 (5060N). Gas threaded ends, PN-16. Constr.: stainless steel AISI 316 investment casting. Actuator seal: NBR. Working temp. range: -10°C +180°C. Pressure control actuator: 3-10 kg/cm2.

Medida/Size	A	B	L	D
1/2"	133	126	68	60
3/4"	137	131	75	60
1"	149	140	90	65
1 1/4"	188	175	116	77
1 1/2"	190	178	116	77
2"	203	184	138	77

5060 04	1/2"	0,945	-
5060 05	3/4"	1,048	-
5060 06	1"	1,353	-
5060 07	1 1/4"	2,513	-
5060 08	1 1/2"	2,674	-
5060 09	2"	3,565	-

Precios rosca NPT a consultar / NPT thread prices on request



Ref. 5062 - 5062N



**Válvula neumática de corredera**

También disponible con rosca NPT (5062N). Construcción en acero inoxidable AISI 304. Extremos rosca gas ISO 228-1. Material de cierre: EPDM. Conexión neumática Namur. Presión máxima de trabajo 16 PN. Accionamiento simple efecto (retorno a resorte).

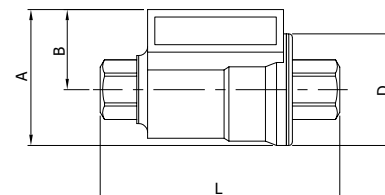
**Pneumatic shuttle valve**

Also available with NPT thread (5062N). Stainless steel material AISI 304. Gas thread ends ISO 228-1. Seat EPDM material. Namur pneumatic connection. Maximum working pressure 16 PN. Control by single action (spring return).

Medida/Size	A	B	D	L
3/8"	54	31	46	98
1/2"	59	33	52	112
3/4"	70	38	64	135
1"	76	41	69	143
1 1/4"	92	49	86	165
1 1/2"	102	54	96	180
2"	114	60	108	207

5062 03	3/8"	0,778	-
5062 04	1/2"	0,980	-
5062 05	3/4"	1,434	-
5062 06	1"	1,936	-
5062 07	1 1/4"	2,980	-
5062 08	1 1/2"	3,652	-
5062 09	2"	5,492	-

Precios rosca NPT a consultar / NPT thread prices on request



Ref. 5065



**Válvula neumática 2 vías modulante**

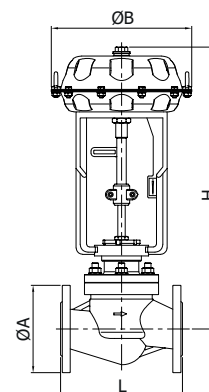
Construcción en acero al carbono WCB. Extremos bridados DIN PN 16. Asiento PPL. Temperatura de trabajo -20°C/+230°C.

**2 ways modulate pneumatic valve**

Body: carbon steel WCB. DIN PN 16 flange ends. Seat material: PPL. Working temperature -20°C/+230°C.

Medida/Size	A	B	H	L
1/2"	95	228	475	150
3/4"	105	228	480	150
1"	115	228	480	160
1 1/4"	140	228	480	180
1 1/2"	150	272	552	200
2"	165	272	552	230
2 1/2"	185	272	592	290
3"	200	272	592	310
4"	220	272	592	350

5065 04	1/2"	17,900	-
5065 05	3/4"	18,000	-
5065 06	1"	19,975	-
5065 07	1 1/4"	21,700	-
5065 08	1 1/2"	30,600	-
5065 09	2"	33,875	-
5065 10	2 1/2"	48,475	-
5065 11	3"	51,875	-
5065 12	4"	64,250	-



# LÍNEA INDUSTRIAL / INDUSTRIAL LINE

Ref. 5065A



### Válvula neumática 2 vías modulante

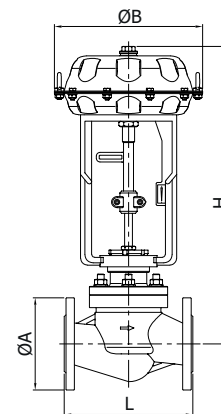
Construcción en acero al carbono WCB.  
Extremos bridados ANSI S-150.  
Asientos PPL.  
Temperatura de trabajo: -10°C/+230°C.

### 2 ways modulate pneumatic valve

Body: carbon steel WCB.  
ANSI S-150 Flange ends.  
Seat material: PPL.  
Working temperature: -10°C/+230°C

Medida/Size	A	B	H	L
3/4"	98,6	228	535	184
1"	108	228	535	184
1 1/4"	117	228	480	200
1 1/2"	127	272	552	222
2"	152,5	272	552	254
2 1/2"	177,8	272	592	276
3"	190,5	272	592	298
4"	228,6	272	592	352

CÓDIGO CODE	MEDIDA SIZE	PESO WEIGHT	P.V.P. € PRICE €
5065A 05	3/4"	18,000	-
5065A 06	1"	19,975	-
5065A 07	1 1/4"	21,700	-
5065A 08	1 1/2"	31,100	-
5065A 09	2"	34,200	-
5065A 10	2 1/2"	47,700	-
5065A 11	3"	51,875	-
5065A 12	4"	65,875	-



Ref. 5015



### Válvula esfera 2 piezas

Características de válvula ver art. 2015.

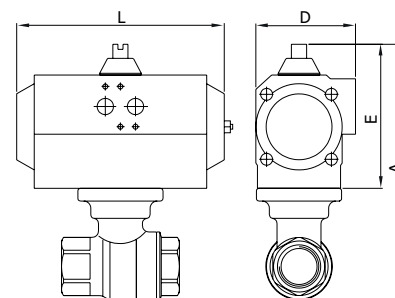
### 2 pieces ball valve

Valve characteristics see art. 2015.

GNP					
Medida/Size	MOD. ACT	A	E	L	D
1/4"	GNP-14	132	80	122	65
3/8"	GNP-14	132	80	122	65
1/2"	GNP-14	165	80	122	65
3/4"	GNP-14	174	80	122	65
1"	GNP-14	180	80	122	65
1 1/4"	GNP-44	202,5	117,5	168	83
1 1/2"	GNP-44	214,5	177,5	168	83
2"	GNP-44	228,5	177,5	168	83

GNP					
Medida/Size	MOD. ACT	A	E	L	D
1/4"	GNP-24/S4	154	102	147	71,5
3/8"	GNP-24/S4	154	102	147	71,5
1/2"	GNP-24/S4	157	102	147	71,5
3/4"	GNP-44/S4	181,5	117,5	168	83
1"	GNP-44/S5	186,5	117,5	168	83
1 1/4"	GNP-60/S5	214,5	129,5	184	92
1 1/2"	GNP-94/S5	235,5	138,5	204	103
2"	GNP-135/S5	258	147	262	108,5

CÓDIGO CODE	MEDIDA SIZE	TIPO ACT. ACT. TYPE	PESO WEIGHT	P.V.P. € PRICE €
GNP Doble efecto / GNP Double acting				
5015 02 120	1/4"	GNP-14	1,100	-
5015 03 120	3/8"	GNP-14	1,090	-
5015 04 122	1/2"	GNP-14	1,150	-
5015 05 122	3/4"	GNP-14	1,430	-
5015 06 122	1"	GNP-14	1,580	-
5015 07 128	1 1/4"	GNP-44	3,460	-
5015 08 128	1 1/2"	GNP-44	4,010	-
5015 09 128	2"	GNP-44	4,930	-
GNP Simple efecto / GNP Spring return				
5015 02 124	1/4"	GNP-24/S4	1,670	-
5015 03 124	3/8"	GNP-24/S4	1,650	-
5015 04 126	1/2"	GNP-24/S4	1,700	-
5015 05 132	3/4"	GNP-44/S4	2,830	-
5015 06 136	1"	GNP-44/S5	2,980	-
5015 07 140	1 1/4"	GNP-60/S5	4,250	-
5015 08 144	1 1/2"	GNP-94/S5	5,300	-
5015 09 148	2"	GNP-135/S5	8,100	-

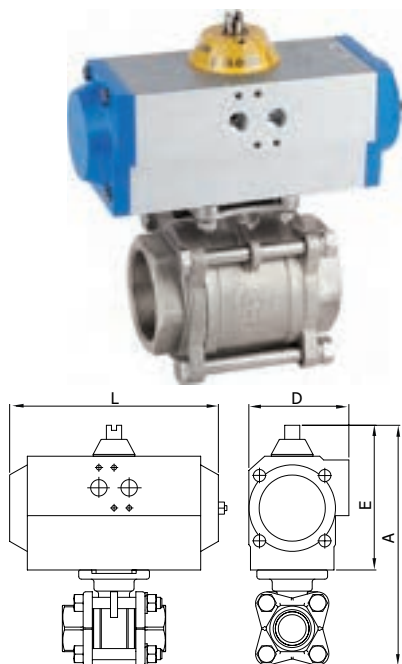


03 AUTOMATIZACIÓN & CONTROL  
AUTOMATION & CONTROL

Ref. 5025 - 5026 - 5027  
Rosca Gas - BW - SW

**Válvula esfera 3 piezas / Actuador Gen-Air**  
Características de válvula ver art. 2025/2026/2027.

**3 pieces ball valve / Gen-Air actuator**  
Valve characteristics see art. 2025/2026/2027.



GN					
Medida/Size	MOD. ACT	A	E	L	D
1/4"	GN-05	157	101	119	67
3/8"	GN-05	157	101	119	67
1/2"	GN-05	190	101	119	67
3/4"	GN-05	199	101	119	67
1"	GN-05	204	101	119	67
1 1/4"	GN-15	201	111	165	81
1 1/2"	GN-15	211	111	165	81
2"	GN-17	224	111	197	81
2 1/2"	GN-20	300	128	177	96
3"	GN-25	321	128	239	96
4"	GN-35	391	184	246	131

GN					
Medida/Size	MOD. ACT	A	E	L	D
1/4"	GN-05/S2	157	101	119	67
3/8"	GN-05/S2	157	101	119	67
1/2"	GN-15/S3	170	111	165	81
3/4"	GN-15/S4	179	111	165	81
1"	GN-17/S4	184	111	197	81
1 1/4"	GN-20/S4	218	128	177	96
1 1/2"	GN-25/S4	228	128	239	96
2"	GN-30/S4	260	147	230	114
2 1/2"	GN-35/S3	356	184	246	131
3"	GN-40/S4	377	184	290	131
4"	GN-45/S4	458	198	351	145

CÓDIGO CODE	MEDIDA SIZE	TIPO ACT. ACT. TYPE	PESO WEIGHT	P.V.P. € PRICE €
-------------	-------------	---------------------	-------------	------------------

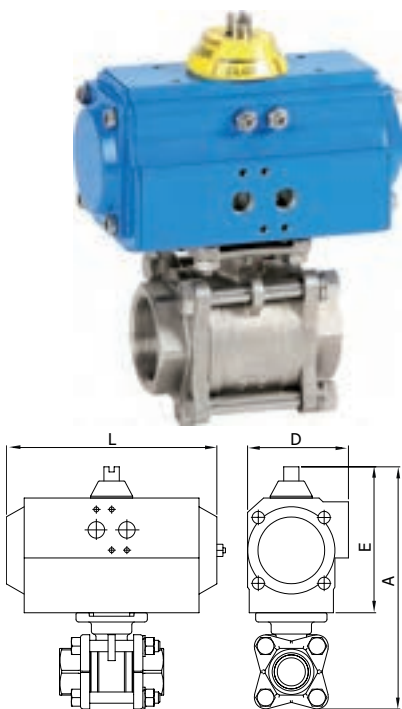
5025 - 5026 - 5027				
Gen-Air Doble efecto / Gen-Air Double acting				
XXXX 02 43	1/4"	GN-05	1,240	-
XXXX 03 43	3/8"	GN-05	1,230	-
XXXX 04 44	1/2"	GN-05	1,290	-
XXXX 05 44	3/4"	GN-05	1,670	-
XXXX 06 44	1"	GN-05	1,870	-
XXXX 07 48	1 1/4"	GN-15	3,650	-
XXXX 08 48	1 1/2"	GN-15	4,180	-
XXXX 09 52	2"	GN-17	5,820	-
XXXX 10 64	2 1/2"	GN-20	11,370	-
XXXX 11 65	3"	GN-25	16,400	-
XXXX 12 67	4"	GN-35	28,930	-
Gen-Air Simple efecto / Gen-Air Spring return				
XXXX 02 45	1/4"	GN-05/S2	1,335	-
XXXX 03 45	3/8"	GN-05/S2	1,335	-
XXXX 04 73	1/2"	GN-15/S3	2,450	-
XXXX 05 74	3/4"	GN-15/S4	2,820	-
XXXX 06 49	1"	GN-17/S4	3,610	-
XXXX 07 76	1 1/4"	GN-20/S4	5,000	-
XXXX 08 77	1 1/2"	GN-25/S4	6,940	-
XXXX 09 78	2"	GN-30/S4	9,050	-
XXXX 10 79	2 1/2"	GN-35/S3	17,520	-
XXXX 11 80	3"	GN-40/S4	23,100	-
XXXX 12 81	4"	GN-45/S4	36,370	-

Precios rosca NPT ref 5025N a consultar / NPT thread ref. 5025N prices on request

Ref. 5025 - 5026 - 5027  
Rosca Gas - BW - SW

**Válvula esfera 3 piezas**  
Características de válvula ver art. 2025/2026/2027.

**3 pieces ball valve**  
Valve characteristics see art. 2025/2026/2027.



GNP					
Medida/Size	MOD. ACT	A	E	L	D
1/4"	GNP-14	136	80	122	65
3/8"	GNP-14	136	80	122	65
1/2"	GNP-14	169	80	122	65
3/4"	GNP-14	178	80	122	65
1"	GNP-14	183	80	122	65
1 1/4"	GNP-44	207,5	117,5	168	83
1 1/2"	GNP-44	217,5	117,5	168	83
2"	GNP-44	230,5	117,5	168	83
2 1/2"	GNP-94	310,5	138,5	204	103
3"	GNP-94	331,5	138,5	204	103
4"	GNP-198	423	163	268	121,5

GNP					
Medida/Size	MOD. ACT	A	E	L	D
1/4"	GNP-24/S4	158	102	147	71,5
3/8"	GNP-24/S4	158	102	147	71,5
1/2"	GNP-24/S4	161	102	147	71,5
3/4"	GNP-44/S4	185,5	117,5	168	83
1"	GNP-44/S5	190,5	117,5	168	83
1 1/4"	GNP-60/S5	219,5	129,5	184	92
1 1/2"	GNP-94/S5	238,5	138,5	204	103
2"	GNP-135/S5	260	147	262	108,5
2 1/2"	GNP-198/S4	335	163	268	121,5
3"	GNP-300/S5	378	185	296	142
4"	GNP-513/S5	461,5	201,5	390	152

5025 - 5026 - 5027				
GNP Doble efecto / GNP Double acting				
XXXX 02 120	1/4"	GNP-14	1,190	-
XXXX 03 120	3/8"	GNP-14	1,180	-
XXXX 04 122	1/2"	GNP-14	1,240	-
XXXX 05 122	3/4"	GNP-14	1,620	-
XXXX 06 122	1"	GNP-14	1,900	-
XXXX 07 128	1 1/4"	GNP-44	3,920	-
XXXX 08 128	1 1/2"	GNP-44	4,450	-
XXXX 09 128	2"	GNP-44	5,550	-
XXXX 10 142	2 1/2"	GNP-94	11,800	-
XXXX 11 142	3"	GNP-94	15,700	-
XXXX 12 150	4"	GNP-198	27,250	-
GNP Simple efecto / GNP Spring return				
XXXX 02 124	1/4"	GNP-24/S4	1,900	-
XXXX 03 124	3/8"	GNP-24/S4	1,900	-
XXXX 04 126	1/2"	GNP-24/S4	1,930	-
XXXX 05 132	3/4"	GNP-44/S4	3,000	-
XXXX 06 136	1"	GNP-44/S5	3,220	-
XXXX 07 140	1 1/4"	GNP-60/S5	4,650	-
XXXX 08 144	1 1/2"	GNP-94/S5	6,060	-
XXXX 09 148	2"	GNP-135/S5	8,980	-
XXXX 10 152	2 1/2"	GNP-198/S4	15,200	-
XXXX 11 160	3"	GNP-300/S5	22,790	-
XXXX 12 164	4"	GNP-513/S5	35,750	-

03 AUTOMATIZACIÓN & CONTROL  
AUTOMATION & CONTROL



# LÍNEA INDUSTRIAL / INDUSTRIAL LINE

Ref. 5029



### Válvula esfera 2 piezas

Características de válvula ver art. 3023 hasta 2" y ver art. 3029 de 2 1/2" a 4".

### 2 pieces ball valve

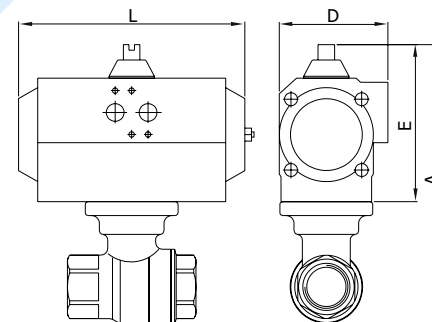
Valve characteristics see art. 3023 until 2" and see art. 3029 from 2 1/2" to 4".

GNP					
Medida/Size	MOD. ACT	A	E	L	D
1/2"	GNP-14	123	80	122	65
3/4"	GNP-14	130	80	122	65
1"	GNP-14	137	80	122	65
1 1/4"	GNP-44	187,5	117,5	168	83
1 1/2"	GNP-44	198,5	117,5	168	83
2"	GNP-44	216,5	117,5	168	83
2 1/2"	GNP-94	296,5	138,5	204	105
3"	GNP-135	331	147	262	108,5
4"	GNP-300	410	185	296	142

GNP					
Medida/Size	MOD. ACT	A	E	L	D
1/2"	GNP-24/S4	145	102	147	71,5
3/4"	GNP-24/S4	152	102	147	71,5
1"	GNP-44/S4	174,5	117,5	168	83
1 1/4"	GNP-44/S4	187,5	117,5	168	83
1 1/2"	GNP-60/S5	200,5	119,5	184	95
2"	GNP-94/S5	228	129	204	103
2 1/2"	GNP-300/S5	349	185	296	142
3"	GNP-513/S5	385,5	201,5	390	152
4"	GNP-1280/S5	480	260	525	206

CÓDIGO CODE	MEDIDA SIZE	TIPO ACT. ACT. TYPE	PESO WEIGHT	P.V.P. € PRICE €
-------------	-------------	---------------------	-------------	------------------

GNP Doble efecto / GNP Double acting				
5029 04 120	1/2"	GNP-14	1,030	-
5029 05 120	3/4"	GNP-14	1,145	-
5029 06 122	1"	GNP-14	1,330	-
5029 07 128	1 1/4"	GNP-44	2,980	-
5029 08 128	1 1/2"	GNP-44	3,370	-
5029 09 128	2"	GNP-44	4,200	-
5029 10 142	2 1/2"	GNP-94	6,950	-
5029 11 146	3"	GNP-135	10,100	-
5029 12 158	4"	GNP-300	18,830	-
GNP Simple efecto / GNP Spring return				
5029 04 124	1/2"	GNP-24/S4	1,730	-
5029 05 124	3/4"	GNP-24/S4	1,840	-
5029 06 134	1"	GNP-44/S4	2,730	-
5029 07 132	1 1/4"	GNP-44/S4	3,080	-
5029 08 140	1 1/2"	GNP-60/S5	4,170	-
5029 09 144	2"	GNP-94/S5	5,700	-
5029 10 160	2 1/2"	GNP-300/S5	14,050	-
5029 11 164	3"	GNP-513/S5	19,500	-
5029 12 172	4"	GNP-1280/S5	54,650	-



Ref. 5070



### Válvula de esfera 3 vías "L"

Características de válvula ver art. 3272E

### "L" 3 ways ball valve

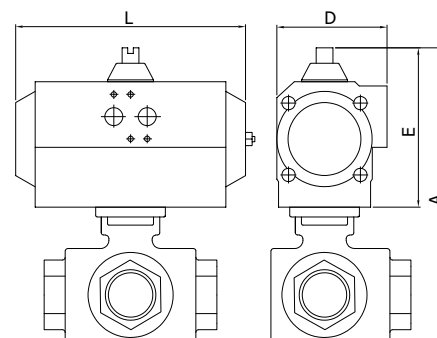
Valve characteristics see art. 3272E

GNP					
Medida/Size	MOD. ACT	A	E	L	D
1/2"	GNP-14	131	80	122	65
3/4"	GNP-14	140	80	122	65
1"	GNP-24	172	102	147	71,5

GNP					
Medida/Size	MOD. ACT	A	E	L	D
1/2"	GNP-24/S4	153	102	147	71,5
3/4"	GNP-44/S4	177	117,5	168	83
1"	GNP-44/S4	188	117,5	168	83



GNP Doble efecto / GNP Double acting				
5070 04 120	1/2"	GNP-14	1,280	-
5070 05 122	3/4"	GNP-14	1,280	-
5070 06 125	1"	GNP-24	2,360	-
GNP Simple efecto / GNP Spring return				
5070 04 124	1/2"	GNP-24/S4	1,980	-
5070 05 134	3/4"	GNP-44/S4	2,940	-
5070 06 134	1"	GNP-44/S4	3,300	-



Ref. 5080



**Válvula esfera 3 vías "T"**

Características de válvula ver art. 3282E

**"T" 3 ways ball valve**

Valve characteristics see art. 3282E

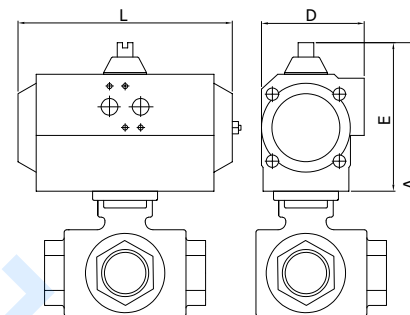
GNP					
Medida/Size	MOD. ACT	A	E	L	D
1/2"	GNP-14	131	80	122	65
3/4"	GNP-14	140	80	122	65
1"	GNP-24	172	102	147	71,5

GNP					
Medida/Size	MOD. ACT	A	E	L	D
1/2"	GNP-24/S4	153	102	147	71,5
3/4"	GNP-44/S4	177	117,5	168	83
1"	GNP-44/S4	188	117,5	168	83



CÓDIGO CODE	MEDIDA SIZE	TIPO ACT. ACT. TYPE	PESO WEIGHT	P.V.P. € PRICE €
-------------	-------------	---------------------	-------------	------------------

GNP Doble efecto / GNP Double acting				
5080 04 120	1/2"	GNP-14	1,280	-
5080 05 122	3/4"	GNP-14	1,540	-
5080 06 125	1"	GNP-24	2,280	-
GNP Simple efecto / GNP Spring return				
5080 04 124	1/2"	GNP-24/S4	1,980	-
5080 05 134	3/4"	GNP-44/S4	2,880	-
5080 06 134	1"	GNP-44/S4	3,300	-



Ref. 5040



**Válvula esfera 3 vías "L"**

Características de válvula ver art. 2040.

**"L" 3 ways ball valve**

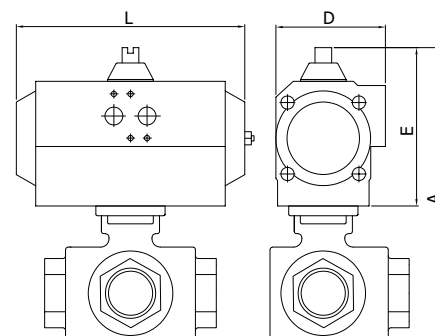
Valve characteristics see art. 2040.

GNP					
Medida/Size	MOD. ACT	A	E	L	D
1/4"	GNP-14	142	80	122	65
3/8"	GNP-14	142	80	122	65
1/2"	GNP-14	142	80	122	65
3/4"	GNP-14	151,5	80	122	65
1"	GNP-44	203,5	117,5	168	83
1 1/4"	GNP-44	218	117,5	168	83
1 1/2"	GNP-44	230,5	117,5	168	83
2"	GNP-60	260	129,5	184	92
2 1/2"	GNP-94	289	139	204	103

GNP					
Medida/Size	MOD. ACT	A	E	L	D
1/4"	GNP-24/S4	164	102	147	71,5
3/8"	GNP-24/S4	164	102	147	71,5
1/2"	GNP-24/S4	164	102	147	71,5
3/4"	GNP-44/S4	189	117,5	168	83
1"	GNP-44/S4	203,5	117,5	168	83
1 1/4"	GNP-60/S5	230	129,5	184	92
1 1/2"	GNP-94/S5	251,5	138,5	204	103
2"	GNP-198/S4	293,5	163	268	122
2 1/2"	GNP-198/S6	313	163	268	122



GNP Doble efecto / GNP Double acting				
5040 02 122	1/4"	GNP-14	1,660	-
5040 03 122	3/8"	GNP-14	1,650	-
5040 04 122	1/2"	GNP-14	1,700	-
5040 05 122	3/4"	GNP-14	1,800	-
5040 06 128	1"	GNP-44	4,060	-
5040 07 128	1 1/4"	GNP-44	5,030	-
5040 08 128	1 1/2"	GNP-44	5,980	-
5040 09 138	2"	GNP-60	9,750	-
5040 10 142	2 1/2"	GNP-94	12,500	-
GNP Simple efecto / GNP Spring return				
5040 02 126	1/4"	GNP-24/S4	2,315	-
5040 03 126	3/8"	GNP-24/S4	2,305	-
5040 04 126	1/2"	GNP-24/S4	2,355	-
5040 05 132	3/4"	GNP-44/S4	3,050	-
5040 06 132	1"	GNP-44/S4	3,940	-
5040 07 140	1 1/4"	GNP-60/S5	5,350	-
5040 08 144	1 1/2"	GNP-94/S5	7,520	-
5040 09 152	2"	GNP-198/S4	12,680	-
5040 10 156	2 1/2"	GNP-198/S6	16,000	-



# LÍNEA INDUSTRIAL / INDUSTRIAL LINE

Ref. 5041



### Válvula esfera 3 vías "T"

Características de válvula ver art. 2041.

#### "T" 3 ways ball valve

Valve characteristics see art. 2041.

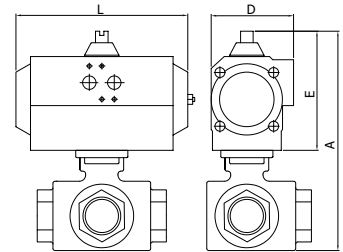
GNP					
Medida/Size	MOD. ACT	A	E	L	D
1/4"	GNP-14	142	80	122	65
3/8"	GNP-14	142	80	122	65
1/2"	GNP-14	142	80	122	65
3/4"	GNP-14	151,5	80	122	65
1"	GNP-44	203,5	117,5	168	83
1 1/4"	GNP-44	218	117,5	168	83
1 1/2"	GNP-44	230,5	117,5	168	83
2"	GNP-60	260	129,5	184	92
2 1/2"	GNP-94	289	139	204	103

GNP					
Medida/Size	MOD. ACT	A	E	L	D
1/4"	GNP-24/S4	164	102	147	71,5
3/8"	GNP-24/S4	164	102	147	71,5
1/2"	GNP-24/S4	164	102	147	71,5
3/4"	GNP-44/S4	189	117,5	168	83
1"	GNP-44/S4	203,5	117,5	168	83
1 1/4"	GNP-60/S5	230	129,5	184	92
1 1/2"	GNP-94/S5	251,5	138,5	204	103
2"	GNP-198/S4	293,5	163	268	122
2 1/2"	GNP-198/S6	313	163	268	122



CÓDIGO CODE	MEDIDA SIZE	TIPO ACT. ACT. TYPE	PESO WEIGHT	P.V.P. € PRICE €
-------------	-------------	---------------------	-------------	------------------

GNP Doble efecto / GNP Double acting				
5041 02 122	1/4"	GNP-14	1,660	-
5041 03 122	3/8"	GNP-14	1,650	-
5041 04 122	1/2"	GNP-14	1,700	-
5041 05 122	3/4"	GNP-14	1,800	-
5041 06 128	1"	GNP-44	3,350	-
5041 07 128	1 1/4"	GNP-44	5,030	-
5041 08 128	1 1/2"	GNP-44	5,980	-
5041 09 138	2"	GNP-60	8,740	-
5041 10 142	2 1/2"	GNP-94	12,300	-
GNP Simple efecto / GNP Spring return				
5041 02 126	1/4"	GNP-24/S4	2,315	-
5041 03 126	3/8"	GNP-24/S4	2,305	-
5041 04 126	1/2"	GNP-24/S4	2,355	-
5041 05 132	3/4"	GNP-44/S4	3,050	-
5041 06 132	1"	GNP-44/S4	3,940	-
5041 07 140	1 1/4"	GNP-60/S5	5,350	-
5041 08 144	1 1/2"	GNP-94/S5	7,520	-
5041 09 152	2"	GNP-198/S4	12,680	-
5041 10 156	2 1/2"	GNP-198/S6	15,600	-



Ref. 5052



### Válvula esfera paso total fondo de cubas

Const. acero inox. CF8M (316) y 316L (fondo de cubas).

Extremo rosca gas ISO 7-1 (EN 10226-1) y fondo de cubas.

Asientos PTFE + 15% FV. Tórica eje vitón.

PN 63. Temp. -25°C +180°C. Montaje directo S/ISO 5211.

Mando manual por palanca con sistema de bloqueo.

#### Tank bottom full bore ball valve

Const. stainless steel CF8M (316) and 316L (tank bottom).

Ends: gas thread ISO 7-1 (EN 10226-1) and tank bottom.

Seats: PTFE + 15% FV. O ring stem: viton. PN 63.

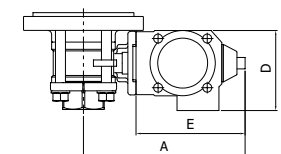
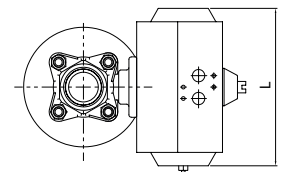
Temp. -25°C +180°C. Direct assembling ISO 5211.

Manually operated by handle with locking system.

GNP					
Medida/Size	MOD. ACT	A	E	L	D
1/2"	GNP-14	163	90	122	65
3/4"	GNP-14	174	90	122	65
1"	GNP-14	181	90	122	65
1 1/4"	GNP-44	227	118	168	83
1 1/2"	GNP-44	242	118	168	83
2"	GNP-44	260	118	168	83
2 1/2"	GNP-94	333	139	204	103
3"	GNP-94	351	139	204	103
4"	GNP-198	409	163	268	121,5

GNP					
Medida/Size	MOD. ACT	A	E	L	D
1/2"	GNP-24/S4	175	102	147	71,5
3/4"	GNP-44/S4	202	117,5	168	83
1"	GNP-44/S5	209	117,5	168	83
1 1/4"	GNP-60/S5	238,5	129,5	184	92
1 1/2"	GNP-94/S5	263	138,5	204	103
2"	GNP-135/S5	289	147	262	108,5
2 1/2"	GNP-198/S4	357	163	268	121,5
3"	GNP-300/S5	397,5	185	296	142
4"	GNP-513/S5	447,5	201,5	390	152

GNP Doble efecto / GNP Double acting				
5052 04 122	1/2"	GNP-14	1,580	-
5052 05 122	3/4"	GNP-14	2,050	-
5052 06 122	1"	GNP-14	2,600	-
5052 07 128	1 1/4"	GNP-44	3,920	-
5052 08 128	1 1/2"	GNP-44	4,500	-
5052 09 128	2"	GNP-44	5,700	-
5052 10 142	2 1/2"	GNP-94	11,800	-
5052 11 142	3"	GNP-94	16,700	-
5052 12 150	4"	GNP-198	26,000	-
GNP Simple efecto / GNP Spring Return				
5052 04 126	1/2"	GNP-24/S4	1,890	-
5052 05 132	3/4"	GNP-44/S4	3,300	-
5052 06 136	1"	GNP-44/S5	3,220	-
5052 07 140	1 1/4"	GNP-60/S5	4,650	-
5052 08 144	1 1/2"	GNP-94/S5	6,100	-
5052 09 148	2"	GNP-135/S5	9,200	-
5052 10 152	2 1/2"	GNP-198/S4	15,300	-
5052 11 160	3"	GNP-300/S5	23,000	-
5052 12 164	4"	GNP-513/S5	27,500	-





Ref. 5053



**Válvula esfera paso total fondo de cubas**

Const. acero inox. CF8M (316) y 316l (fondo de cubas).  
**Extremo butt weld ANSI B 16.25 y fondo de cubas.**  
 Asientos PTFE + 15% FV. Tórica eje vitón.  
 PN 63. Temp. -25°C +180°C. Montaje directo s/ISO 5211.  
 Mando manual por palanca con sistema de bloqueo.

**Tank bottom full bore ball valve**

Const. stainless steel CF8M (316) and 316l (tank bottom).  
**Ends: butt weld ANSI B 16.25 and tank bottom.**  
 Seats: PTFE + 15% FV. O'ring stem: viton.  
 PN 63. Temp. -25°C +180°C. Direct assembling ISO 5211.  
 Manually operated by handle with locking system.

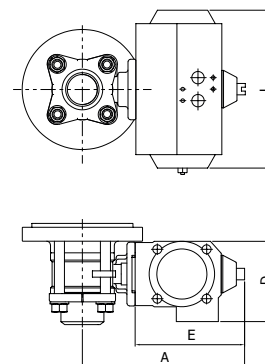
GNP					
Medida/Size	MOD. ACT	A	E	L	D
1/2"	GNP-14	163	90	122	65
3/4"	GNP-14	174	90	122	65
1"	GNP-14	181	90	122	65
1 1/4"	GNP-44	227	118	168	83
1 1/2"	GNP-44	242	118	168	83
2"	GNP-44	260	118	168	83
2 1/2"	GNP-94	333	139	204	103
3"	GNP-94	351	139	204	103
4"	GNP-198	409	163	268	121,5

GNP					
Medida/Size	MOD. ACT	A	E	L	D
1/2"	GNP-24/S4	175	102	147	71,5
3/4"	GNP-44/S4	202	117,5	168	83
1"	GNP-44/S5	209	117,5	168	83
1 1/4"	GNP-60/S5	238,5	129,5	184	92
1 1/2"	GNP-94/S5	263	138,5	204	103
2"	GNP-135/S5	289	147	262	108,5
2 1/2"	GNP-198/S4	357	163	268	121,5
3"	GNP-300/S5	397,5	185	296	142
4"	GNP-513/S5	447,5	201,5	390	152

CÓDIGO CODE	MEDIDA SIZE	TIPO ACT. ACT. TYPE	PESO WEIGHT	P.V.P. € PRICE €
-------------	-------------	---------------------	-------------	------------------

GNP Doble efecto / GNP Double acting				
5053 04 122	1/2"	GNP-14	1,580	-
5053 05 122	3/4"	GNP-14	2,040	-
5053 06 122	1"	GNP-14	2,340	-
5053 07 128	1 1/4"	GNP-44	4,550	-
5053 08 128	1 1/2"	GNP-44	5,380	-
5053 09 128	2"	GNP-44	5,600	-
5053 10 142	2 1/2"	GNP-94	13,420	-
5053 11 142	3"	GNP-94	13,420	-
5053 12 150	4"	GNP-198	27,700	-

GNP Simple efecto / GNP Spring Return				
5053 04 126	1/2"	GNP-24/S4	2,190	-
5053 05 132	3/4"	GNP-44/S4	3,290	-
5053 06 136	1"	GNP-44/S5	3,630	-
5053 07 140	1 1/4"	GNP-60/S5	5,500	-
5053 08 144	1 1/2"	GNP-94/S5	6,950	-
5053 09 148	2"	GNP-135/S5	9,950	-
5053 10 152	2 1/2"	GNP-198/S4	16,920	-
5053 11 160	3"	GNP-300/S5	24,000	-
5053 12 164	4"	GNP-513/S5	37,500	-



Ref. 5540E

NEW

**Válvula esfera 3 vías bridada "L"**

Características de válvula ver art. 2540E.

**"L" ways ball valve with flanges**

Valve characteristics see art. 2540E.



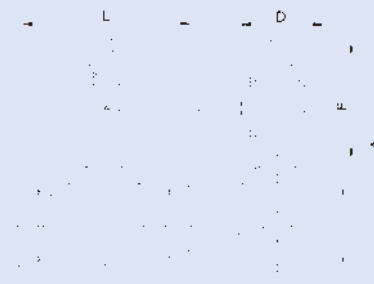
GNP					
Medida/Size	MOD. ACT	A	E	L	D
1"	GNP-44	178	117,5	168	83
1 1/4"	GNP-44	193,5	117,5	168	83
1 1/2"	GNP-60	186	129,5	184	92
2"	GNP-94	223,5	138,5	204	103
2 1/2"	GNP-135	238	147	262	108,5
3"	GNP-198	285,5	163	268	121,5
4"	GNP-513	347	201,5	390	152

GNP					
Medida/Size	MOD. ACT	A	E	L	D
1"	GNP-84/S5	199	138,5	204	103
1 1/4"	GNP-135/S5	223	147	262	108,5
1 1/2"	GNP-198/S4	241,5	163	268	121,5
2"	GNP-300/S5	270	185	296	142
2 1/2"	GNP-513/S5	311,5	201,5	390	152
3"	GNP-800/S5	349,5	227	454	174
4"	GNP-1280/S5	405,5	260	525	206



GNP Doble efecto / GNP Double acting				
5540E 06 128	1"	GNP-44	8,660	-
5540E 07 128	1 1/4"	GNP-44	12,520	-
5540E 08 138	1 1/2"	GNP-60	16,660	-
5540E 09 142	2"	GNP-94	21,700	-
5540E 10 146	2 1/2"	GNP-135	27,700	-
5540E 11 150	3"	GNP-198	47,900	-
5540E 12 162	4"	GNP-513	57,940	-

GNP Simple efecto / GNP Spring return				
5540E 06 144	1"	GNP-94/S5	10,160	-
5540E 07 148	1 1/4"	GNP-135/S5	15,960	-
5540E 08 152	1 1/2"	GNP-198/S4	20,660	-
5540E 09 160	2"	GNP-300/S5	28,800	-
5540E 10 164	2 1/4"	GNP-513/S5	37,100	-
5540E 11 168	3"	GNP-800/S5	65,300	-
5540E 12 172	4"	GNP-1280/S5	92,040	-



03 AUTOMATIZACIÓN & CONTROL  
AUTOMATION & CONTROL

# LÍNEA INDUSTRIAL / INDUSTRIAL LINE

Ref. 5541E

**NEW**

## Válvula esfera 3 vías bridada "T"

Características de válvula ver art. 2541E.

### "T" 3 ways ball valve with flanges

Valve characteristics see art. 2541E.



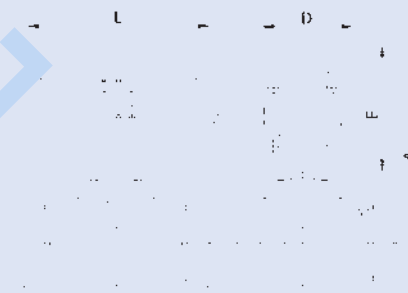
GNP					
Medida/Size	MOD. ACT	A	E	L	D
1"	GNP-44	178	117,5	168	83
1 1/4"	GNP-44	193,5	117,5	168	83
2"	GNP-60	186	129,5	184	92
2"	GNP-94	223,5	138,5	204	103
2 1/2"	GNP-135	238	147	262	108,5
3"	GNP-198	285,5	163	268	121,5
4"	GNP-513	347	201,5	390	152

GNP					
Medida/Size	MOD. ACT	A	E	L	D
1"	GNP-94/S5	199	138,5	204	103
1 1/4"	GNP-135/S5	223	147	262	108,5
1 1/2"	GNP-198/S4	241,5	163	268	121,5
2"	GNP-300/S5	270	185	296	142
2 1/2"	GNP-513/S5	311,5	201,5	390	152
3"	GNP-800/S5	349,5	227	454	174
4"	GNP-1280/S5	405,5	260	525	206



CÓDIGO CODE	MEDIDA SIZE	TIPO ACT. ACT. TYPE	PESO WEIGHT	P.V.P. € PRICE €
-------------	-------------	---------------------	-------------	------------------

GNP Doble efecto / GNP Double acting				
5541E 06 128	1"	GNP-44	8,640	-
5541E 07 128	1 1/4"	GNP-44	12,440	-
5541E 08 138	1 1/2"	GNP-60	17,400	-
5541E 09 142	2"	GNP-94	21,700	-
5541E 10 146	2 1/2"	GNP-135	27,700	-
5541E 11 150	3"	GNP-198	37,200	-
5541E 12 162	4"	GNP-513	55,240	-
GNP simple efecto / GNP Spring return				
5541E 06 144	1"	GNP-94/S5	10,140	-
5541E 07 148	1 1/4"	GNP-135/S5	15,840	-
5541E 08 152	1 1/2"	GNP-198/S4	21,400	-
5541E 09 160	2"	GNP-300/S5	28,620	-
5541E 10 164	2 1/2"	GNP-513/S5	36,400	-
5541E 11 168	3"	GNP-800/S5	54,600	-
5541E 12 172	4"	GNP-1280/S5	92,040	-



Ref. 5544

**NEW**

## Válvula esfera 3 vías bridada "L"

Características de válvula ver art. 2544

### "L" 3 ways ball valve with flanges

Valve characteristics see art. 2544.

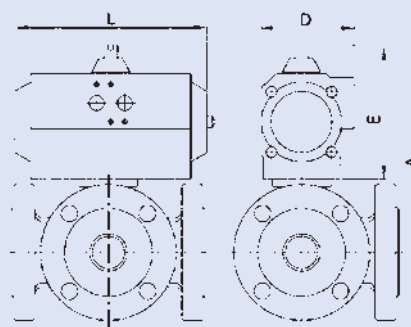


GNP					
Medida/Size	MOD. ACT	A	E	L	D
1"	GNP-44	178	117,5	168	83
1 1/4"	GNP-44	193,5	117,5	168	83
1 1/2"	GNP-60	186	129,5	184	92
2"	GNP-94	223,5	138,5	204	103
2 1/2"	GNP-135	238	147	262	108,5
3"	GNP-198	285,5	163	268	121,5
4"	GNP-513	347	201,5	390	152

GNP					
Medida/Size	MOD. ACT	A	E	L	D
1"	GNP-94/S5	199	138,5	204	103
1 1/4"	GNP-135/S5	223	147	262	108,5
1 1/2"	GNP-198/S4	241,5	163	268	121,5
2"	GNP-300/S5	270	185	296	142
2 1/2"	GNP-513/S5	311,5	201,5	390	152
3"	GNP-800/S5	349,5	227	454	174
4"	GNP-1280/S5	405,5	260	525	206



GNP Doble efecto / GNP Double acting				
5544 06 128	1"	GNP-44	8,660	-
5544 07 128	1 1/4"	GNP-44	12,440	-
5544 08 138	1 1/2"	GNP-60	16,480	-
5544 09 142	2"	GNP-94	21,520	-
5544 10 146	2 1/2"	GNP-135	27,000	-
5544 11 150	3"	GNP-198	37,200	-
5544 12 162	4"	GNP-513	55,240	-
GNP Simple efecto / GNP Spring return				
5544 06 144	1"	GNP-94/S5	10,160	-
5544 07 148	1 1/4"	GNP-135/S5	15,960	-
5544 08 152	1 1/2"	GNP-198/S4	20,660	-
5544 09 160	2"	GNP-300/S5	28,800	-
5544 10 164	2 1/2"	GNP-513/S5	37,100	-
5544 11 168	3"	GNP-800/S5	55,400	-
5544 12 172	4"	GNP-1280/S5	92,040	-



Ref. 5545

**NEW**

**Válvula esfera 3 vías bridada "T"**

Características de válvula ver art. 2545.

**"T" 3 ways ball valve with flanges**

Valve characteristics see art. 2545.



GNP					
Medida/Size	MOD. ACT	A	E	L	D
1"	GNP-44	178	117,5	168	83
1 1/4"	GNP-44	193,5	117,5	168	83
1 1/2"	GNP-60	186	129,5	184	92
2"	GNP-94	223,5	138,5	204	103
2 1/2"	GNP-135	238	147	262	108,5
3"	GNP-198	285,5	163	268	121,5
4"	GNP-513	347	201,5	390	152

GNP					
Medida/Size	MOD. ACT	A	E	L	D
1"	GNP-94/S5	199	138,5	204	103
1 1/4"	GNP-135/S5	223	147	262	108,5
1 1/2"	GNP-198/S4	241,5	163	268	121,5
2"	GNP-300/S5	270	185	296	142
2 1/2"	GNP-513/S5	311,5	201,5	390	152
3"	GNP800/S5	349,5	227	454	174
4"	GNP1280/S5	405,5	260	525	206



CÓDIGO CODE	MEDIDA SIZE	TIPO ACT. ACT. TYPE	PESO WEIGHT	P.V.P. € PRICE €
-------------	-------------	---------------------	-------------	------------------

GNP Doble efecto / GNP Double acting				
5545 06 128	1"	GNP-44	8,640	-
5545 07 128	1 1/4"	GNP-44	12,440	-
5545 08 138	1 1/2"	GNP-60	16,480	-
5545 09 142	2"	GNP-94	21,520	-
5545 10 146	2 1/2"	GNP-135	27,000	-
5545 11 150	3"	GNP-198	37,200	-
5545 12 162	4"	GNP-513	55,240	-
GNP Simple efecto / GNP Spring return				
5545 06 144	1"	GNP-94/S5	10,140	-
5545 07 148	1 1/4"	GNP-135/S5	15,840	-
5545 08 152	1 1/2"	GNP-198/S4	20,800	-
5545 09 160	2"	GNP-300/S5	28,620	-
5545 10 164	2 1/2"	GNP-513/S5	36,400	-
5545 11 168	3"	GNP-800/S5	54,600	-
5545 12 172	4"	GNP-1280/S5	89,340	-



Ref. 5525

**Válvula esfera 2 piezas bridada**

Características de válvula ver art. 2525.

**2 pieces full bore ball valve**

Valve characteristics see art. 2525.



GN					
Medida/Size	MOD. ACT	A	E	L	D
1/2"	GN-15	160	111	165	81
3/4"	GN-15	165	111	165	81
1"	GN-15	171	111	165	81
1 1/4"	GN-15	184	111	165	81
1 1/2"	GN-15	189	111	165	81
2"	GN-20	214	128	177	96
2 1/2"	GN-20	226	128	177	96
3"	GN-25	241	128	239	96
4"	GN-35	320	184	246	131
5"	GN-40	384	184	290	131
6"	GN-45	448	198	351	145
8"	GN-55	632	232	418	181

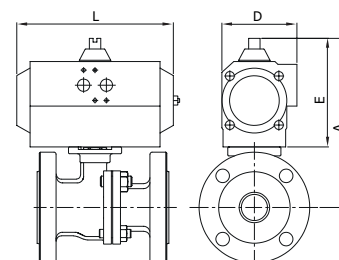
GN					
Medida/Size	MOD. ACT	A	E	L	D
1/2"	GN-15/S3	160	111	165	81
3/4"	GN-15/S4	160	111	165	81
1"	GN-20/S3	188	128	177	96
1 1/4"	GN-20/S4	201	128	177	96
1 1/2"	GN-25/S4	206	128	239	96
2"	GN-30/S4	233	147	230	114
2 1/2"	GN-35/S3	282	184	246	131
3"	GN-40/S4	297	184	290	131
4"	GN-45/S4	334	198	351	145
5"	GN-55/S4	432	232	418	181
6"	GN-55/S5	482	232	418	181
8"	GN-65/S5	687	287	502	230

Gen-Air Doble efecto / Gen-Air Double acting				
--	--	--	--	--

5525 04 62	1/2"	GN-15	4,030	-
5525 05 63	3/4"	GN-15	4,630	-
5525 06 63	1"	GN-15	5,630	-
5525 07 63	1 1/4"	GN-15	7,130	-
5525 08 63	1 1/2"	GN-15	8,630	-
5525 09 64	2"	GN-20	12,070	-
5525 10 64	2 1/2"	GN-20	15,370	-
5525 11 65	3"	GN-25	20,700	-
5525 12 67	4"	GN-35	29,680	-
5525 13 68	5"	GN-40	54,530	-
5525 14 69	6"	GN-45	74,960	-
5525 16 84	8"	GN-55	110,080	-

Gen-Air Simple efecto / Gen-Air Spring return				
---	--	--	--	--

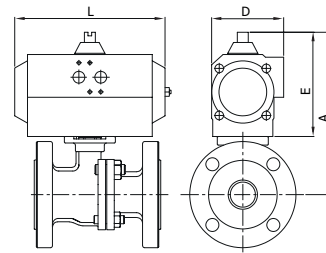
5525 04 73	1/2"	GN-15/S3	4,220	-
5525 05 74	3/4"	GN-15/S4	4,820	-
5525 06 75	1"	GN-20/S3	7,050	-
5525 07 76	1 1/4"	GN-20/S4	8,550	-
5525 08 77	1 1/2"	GN-25/S4	11,280	-
5525 09 78	2"	GN-30/S4	14,770	-
5525 10 79	2 1/2"	GN-35/S3	21,520	-
5525 11 80	3"	GN-40/S4	27,410	-
5525 12 81	4"	GN-45/S4	37,120	-
5525 13 82	5"	GN-55/S4	72,500	-
5525 14 83	6"	GN-55/S5	89,500	-
5525 16 93	8"	GN-65/S5	140,300	-



03 AUTOMATIZACIÓN & CONTROL  
AUTOMATION & CONTROL

# LÍNEA INDUSTRIAL / INDUSTRIAL LINE

Ref. 5525



### Válvula esfera 2 piezas bridada

Características de válvula ver art. 2525.

### 2 pieces full bore ball valve

Valve characteristics see art. 2525.

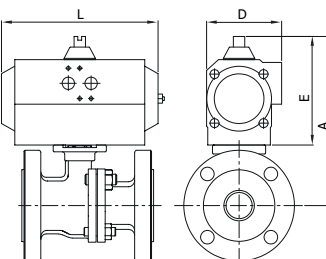
GNP					
Medida/Size	MOD. ACT	A	E	L	D
1/2"	GNP-44	166,5	117,5	168	83
3/4"	GNP-44	171,5	117,5	168	83
1"	GNP-44	177,5	117,5	168	83
1 1/4"	GNP-44	190,5	117,5	168	83
1 1/2"	GNP-44	195,5	117,5	168	83
2"	GNP-60	215,5	129,5	184	92
2 1/2"	GNP-94	236,5	138,5	204	103
3"	GNP-94	251,5	138,5	204	103
4"	GNP-198	299	163	268	121,5
5"	GNP-300	385	185	296	142
6"	GNP-513	451,5	201,5	390	152
8"	GNP-800	627	227	454	174

GNP					
Medida/Size	MOD. ACT	A	E	L	D
1/2"	GNP-24/S4	151	102	147	71,5
3/4"	GNP-44/S4	171,5	117,5	168	83
1"	GNP-60/S5	189,5	129,5	184	92
1 1/4"	GNP-60/S5	202,5	129,5	184	92
1 1/2"	GNP-94/S5	216,5	138,5	204	103
2"	GNP-135/S5	233	147	262	108,5
2 1/2"	GNP-198/S4	261	163	268	121,5
3"	GNP-300/S5	298	185	296	142
4"	GNP-513/S5	337,5	201,5	390	152
5"	GNP-1280/S5	460	260	525	206
6"	GNP-1280/S5	510	260	525	206
8"	GNP-2300/S5	718	318	610	260

CÓDIGO CODE	MEDIDA SIZE	TIPO ACT. ACT. TYPE	PESO WEIGHT	P.V.P. € PRICE €
----------------	----------------	------------------------	----------------	---------------------

GNP Doble efecto / GNP Double acting				
5525 04 130	1/2"	GNP-44	4,300	-
5525 05 128	3/4"	GNP-44	4,900	-
5525 06 128	1"	GNP-44	5,900	-
5525 07 128	1 1/4"	GNP-44	7,400	-
5525 08 128	1 1/2"	GNP-44	8,900	-
5525 09 138	2"	GNP-60	11,900	-
5525 10 142	2 1/2"	GNP-94	15,750	-
5525 11 142	3"	GNP-94	20,000	-
5525 12 150	4"	GNP-198	28,000	-
5525 13 158	5"	GNP-300	54,500	-
5525 14 162	6"	GNP-513	74,500	-
5525 16 166	8"	GNP-800	106,900	-
GNP Simple efecto / GNP Spring return				
5525 04 126	1/2"	GNP-24/S4	3,700	-
5525 05 132	3/4"	GNP-44/S4	5,000	-
5525 06 140	1"	GNP-60/S5	6,700	-
5525 07 140	1 1/4"	GNP-60/S5	8,200	-
5525 08 144	1 1/2"	GNP-94/S5	10,400	-
5525 09 148	2"	GNP-135/S5	14,700	-
5525 10 154	2 1/2"	GNP-198/S5	19,200	-
5525 11 160	3"	GNP-300/S5	27,100	-
5525 12 164	4"	GNP-513/S5	36,500	-
5525 13 172	5"	GNP-1280/S5	91,600	-
5525 14 172	6"	GNP-1280/S5	108,600	-
5525 16 178	8"	GNP-2300/S5	161,200	-

Ref. 5526A



### Válvula esfera 2 piezas bridada

Características de válvula ver art. 2526A.

### 2 pieces ball valve with flanges

Valve characteristics see art. 2526A.

GN					
Medida/Size	MOD. ACT	A	E	L	D
1/2"	GN-05	157	101	119	67
3/4"	GN-05	160	101	119	67
1"	GN-05	160	101	119	67
1 1/4"	GN-15	180	111	165	81
1 1/2"	GN-15	180	111	165	81
2"	GN-17	195	111	197	81
2 1/2"	GN-20	245	128	177	96
3"	GN-25	258	128	239	96
4"	GN-35	328	184	246	131
6"	GN-50	522	232	361	181

GN					
Medida/Size	MOD. ACT	A	E	L	D
1/2"	GN-15/S3	160	111	165	81
3/4"	GN-15/S4	165	111	165	81
1"	GN-17/S3	169	111	197	81
1 1/4"	GN-20/S4	200	128	177	96
1 1/2"	GN-25/S4	205	128	239	96
2"	GN-30/S4	231	147	230	114
2 1/2"	GN-35/S3	303	184	246	131
3"	GN-40/S4	314	184	290	131
4"	GN-45/S4	343	198	351	145
6"	GN-55/S5	482	232	418	181

Gen-Air Doble efecto / Gen-Air Double acting				
5526A 04 44	1/2"	GN-05	2,300	-
5526A 05 44	3/4"	GN-05	2,950	-
5526A 06 44	1"	GN-05	3,700	-
5526A 07 63	1 1/4"	GN-15	6,000	-
5526A 08 63	1 1/2"	GN-15	7,630	-
5526A 09 52	2"	GN-17	10,750	-
5526A 10 64	2 1/2"	GN-20	16,270	-
5526A 11 65	3"	GN-25	21,800	-
5526A 12 67	4"	GN-35	37,360	-
5526A 14 97	6"	GN-50	74,650	-
Gen-Air Simple efecto / Gen-Air Spring return				
5526A 04 73	1/2"	GN-15/S3	3,470	-
5526A 05 74	3/4"	GN-15/S4	4,120	-
5526A 06 49	1"	GN-17/S3	5,440	-
5526A 07 76	1 1/4"	GN-20/S4	7,150	-
5526A 08 77	1 1/2"	GN-25/S4	10,280	-
5526A 09 78	2"	GN-30/S4	13,970	-
5526A 10 79	2 1/2"	GN-35/S3	22,420	-
5526A 11 80	3"	GN-40/S4	28,510	-
5526A 12 81	4"	GN-45/S4	45,520	-
5526A 14 83	6"	GN-55/S5	82,300	-



CÓDIGO CODE	MEDIDA SIZE	TIPO ACT. ACT. TYPE	PESO WEIGHT	P.V.P. € PRICE €
----------------	----------------	------------------------	----------------	---------------------

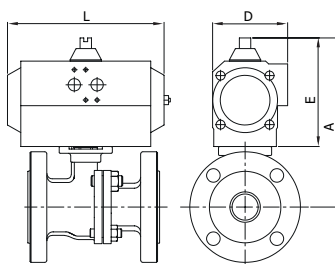
Ref. 5526A

**Válvula esfera 2 piezas bridada**

Características de válvula ver art. 2526A.

**2 pieces ball valve with flanges**

Valve characteristics see art. 2526A.



GNP					
Medida/Size	MOD. ACT	A	E	L	D
1/2"	GNP-14	130	80	122	65
3/4"	GNP-14	137	80	122	65
1"	GNP-14	137	80	122	65
1 1/4"	GNP-44	189	118	168	83
1 1/2"	GNP-44	201	118	168	83
2"	GNP-44	201	118	168	83
2 1/2"	GNP-94	258	139	204	103
3"	GNP-94	268	139	204	103
4"	GNP-198	308	163	268	121,5
6"	GNP-513	451	201	390	152

GNP					
Medida/Size	MOD. ACT	A	E	L	D
1/2"	GNP-44/S4	165	117,5	168	83
3/4"	GNP-44/S4	175	117,5	168	83
1"	GNP-44/S5	175	117,5	168	83
1 1/4"	GNP-60/S5	201	129,5	184	92
1 1/2"	GNP-94/S5	215	138,5	204	103
2"	GNP-135/S5	230	147	262	108,5
2 1/2"	GNP-198/S4	281	163	268	121,5
3"	GNP-300/S5	315	185	296	142
4"	GNP-513/S5	347	201,5	390	152
6"	GNP-1280/S5	510	260	525	206

GNP Doble efecto / GNP Double acting				
5526A 04 122	1/2"	GNP-14	2,250	-
5526A 05 122	3/4"	GNP-14	2,900	-
5526A 06 122	1"	GNP-14	3,650	-
5526A 07 128	1 1/4"	GNP-44	6,270	-
5526A 08 128	1 1/2"	GNP-44	7,900	-
5526A 09 128	2"	GNP-44	10,500	-
5526A 10 142	2 1/2"	GNP-94	16,700	-
5526A 11 142	3"	GNP-94	21,100	-
5526A 12 150	4"	GNP-198	35,680	-
5526A 14 162	6"	GNP-513	67,200	-
GNP Simple efecto / GNP Spring return				
5526A 04 134	1/2"	GNP-44/S4	3,650	-
5526A 05 132	3/4"	GNP-44/S4	4,300	-
5526A 06 136	1"	GNP-44/S5	5,050	-
5526A 07 140	1 1/4"	GNP-60/S5	6,800	-
5526A 08 144	1 1/2"	GNP-94/S5	9,400	-
5526A 09 148	2"	GNP-135/S5	13,900	-
5526A 10 152	2 1/2"	GNP-198/S4	20,100	-
5526A 11 160	3"	GNP-300/S5	28,200	-
5526A 12 164	4"	GNP-513/S5	44,900	-
5526A 14 172	6"	GNP-1280/S5	101,300	-

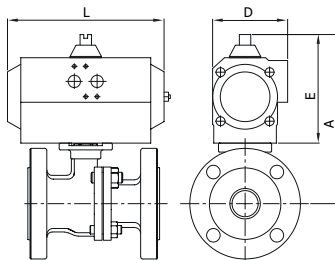
Ref. 5528

**Válvula esfera 2 piezas bridada**

Características de válvula ver art. 2528.

**2 pieces full bore ball valve**

Valve characteristics see art. 2528.



GN					
Medida/Size	MOD. ACT	A	E	L	D
1/2"	GN-05	147,5	101	119	67
3/4"	GN-05	152,5	101	119	67
1"	GN-05	158,5	101	119	67
1 1/4"	GN-15	182,0	111	165	81
1 1/2"	GN-15	187,0	111	165	81
2"	GN-17	194,0	111	197	81
2 1/2"	GN-20	246,5	128	177	96
3"	GN-25	257,5	128	239	96
4"	GN-35	329	184	246	131
5"	GN-50	432	232	361	181
6"	GN-50	482	232	361	181
8"	GN-55	632	232	418	181

GN					
Medida/Size	MOD. ACT	A	E	L	D
1/2"	GN-15/S3	160	111	165	81
3/4"	GN-15/S4	165	111	165	81
1"	GN-20/S3	188	128	177	96
1 1/4"	GN-20/S4	201	128	177	96
1 1/2"	GN-25/S4	206	128	239	96
2"	GN-30/S4	233	147	230	114
2 1/2"	GN-35/S3	282	184	246	131
3"	GN-40/S4	297	184	290	131
4"	GN-45/S4	334	198	351	145
5"	GN-55/S4	432	232	418	181
6"	GN-55/S5	482	232	418	181
8"	GN-65/S5	687	287	502	230

Gen-Air Doble efecto / Gen-Air Double acting				
5528 04 44	1/2"	GN-05	3,050	-
5528 05 44	3/4"	GN-05	3,900	-
5528 06 44	1"	GN-05	4,600	-
5528 07 63	1 1/4"	GN-15	7,580	-
5528 08 63	1 1/2"	GN-15	8,830	-
5528 09 52	2"	GN-17	11,850	-
5528 10 64	2 1/2"	GN-20	17,620	-
5528 11 65	3"	GN-25	22,850	-
5528 12 67	4"	GN-35	33,110	-
5528 13 97	5"	GN-50	70,130	-
5528 14 97	6"	GN-50	83,300	-
5528 16 84	8"	GN-55	132,980	-
Gen-Air Simple efecto / Gen-Air Spring return				
5528 04 73	1/2"	GN-15/S3	4,220	-
5528 05 74	3/4"	GN-15/S4	5,070	-
5528 06 49	1"	GN-17/S4	6,340	-
5528 07 76	1 1/4"	GN-20/S4	9,000	-
5528 08 77	1 1/2"	GN-25/S4	11,480	-
5528 09 78	2"	GN-30/S4	15,070	-
5528 10 79	2 1/2"	GN-35/S3	23,770	-
5528 11 80	3"	GN-40/S4	29,560	-
5528 12 81	4"	GN-45/S4	41,270	-
5528 13 82	5"	GN-55/S4	78,650	-
5528 14 83	6"	GN-55/S5	97,850	-
5528 16 93	8"	GN-65/S5	163,750	-

03 AUTOMATIZACIÓN & CONTROL  
AUTOMATION & CONTROL



# LÍNEA INDUSTRIAL / INDUSTRIAL LINE

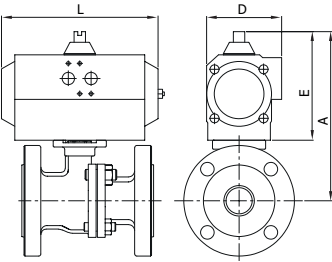
Ref. 5528

## Válvula esfera 2 piezas bridada

Características de válvula ver art. 2528.

### 2 pieces full bore ball valve

Valve characteristics see art. 2528.



GNP					
Medida/Size	MOD. ACT	A	E	L	D
1/2"	GNP-14	126,5	80	122	65
3/4"	GNP-14	131,5	80	122	65
1"	GNP-14	137,5	80	122	65
1 1/4"	GNP-44	189	117,5	168	83
1 1/2"	GNP-44	194	117,5	168	83
2"	GNP-44	201	117,5	168	83
2 1/2"	GNP-94	258	138,5	203	103
3"	GNP-94	268	138,5	204	103
4"	GNP-198	308	163	268	121,5
5"	GNP-513	401,5	201,5	390	152
6"	GNP-513	451,5	201,5	390	152
8"	GNP-800	627	227	454	174

GNP					
Medida/Size	MOD. ACT	A	E	L	D
1/2"	GNP-24/S4	148	102	147	71,5
3/4"	GNP-44/S4	169	117,5	168	83
1"	GNP-44/S5	175	117,5	168	83
1 1/4"	GNP-60/S5	201	129,5	184	92
1 1/2"	GNP-94/S5	215	138,5	204	103
2"	GNP-135/S5	230,5	147	262	108,5
2 1/2"	GNP-198/S4	281,5	163	268	121,5
3"	GNP-300/S5	314,5	185	296	142
4"	GNP-513/S5	346,5	201,5	390	152
5"	GNP-1280/S5	460	260	525	206
6"	GNP-1280/S5	510	260	525	206
8"	GNP-2300/S5	718	318	610	260

CÓDIGO CODE	MEDIDA SIZE	TIPO ACT. ACT. TYPE	PESO WEIGHT	P.V.P. € PRICE €
----------------	----------------	------------------------	----------------	---------------------

GNP Doble efecto / GNP Double acting				
5528 04 122	1/2"	GNP-14	3,000	-
5528 05 122	3/4"	GNP-14	3,850	-
5528 06 122	1"	GNP-14	4,550	-
5528 07 128	1 1/4"	GNP-44	7,850	-
5528 08 128	1 1/2"	GNP-44	9,100	-
5528 09 128	2"	GNP-44	11,600	-
5528 10 142	2 1/2"	GNP-94	18,050	-
5528 11 142	3"	GNP-94	22,150	-
5528 12 150	4"	GNP-198	31,430	-
5528 13 162	5"	GNP-513	51,400	-
5528 14 162	6"	GNP-513	75,700	-
5528 16 166	8"	GNP-800	129,800	-
GNP Simple efecto / GNP Spring return				
5528 04 126	1/2"	GNP-24/S4	3,700	-
5528 05 132	3/4"	GNP-44/S4	5,250	-
5528 06 136	1"	GNP-44/S5	5,950	-
5528 07 140	1 1/4"	GNP-60/S5	8,650	-
5528 08 144	1 1/2"	GNP-94/S5	10,600	-
5528 09 148	2"	GNP-135/S5	15,000	-
5528 10 152	2 1/2"	GNP-198/S4	21,450	-
5528 11 160	3"	GNP-300/S5	29,250	-
5528 12 164	4"	GNP-513/S5	40,650	-
5528 13 172	5"	GNP-1280/S5	97,750	-
5528 14 172	6"	GNP-1280/S5	116,950	-
5528 16 178	8"	GNP-2300/S5	184,650	-

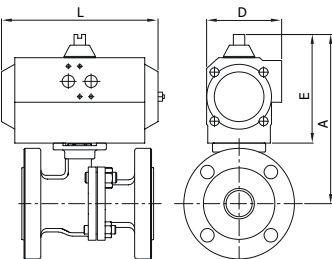
Ref. 5528A

## Válvula esfera 2 piezas bridada

Características de válvula ver art. 2528A.

### 2 pieces ball valve with flanges

Valve characteristics see art. 2528A.



GN					
Medida/Size	MOD. ACT	A	E	L	D
1/2"	GN-05	147,5	101	119	67
3/4"	GN-05	152,5	101	119	67
1"	GN-05	158,5	101	119	67
1 1/4"	GN-15	182,0	111	165	81
1 1/2"	GN-15	187,0	111	165	81
2"	GN-17	194,0	111	197	81
2 1/2"	GN-20	246,5	128	177	96
3"	GN-25	257,5	128	239	96
4"	GN-35	329	184	246	131
6"	GN-50	482	232	361	181
8"	GN-55	632	232	418	181

GN					
Medida/Size	MOD. ACT	A	E	L	D
1/2"	GN-15/S3	157,5	111	165	81
3/4"	GN-15/S4	162,5	111	165	81
1"	GN-17/S4	168,5	111	197	81
1 1/4"	GN-20/S4	199,5	128	177	96
1 1/2"	GN-25/S4	204,5	128	239	96
2"	GN-30/S4	230,5	147	230	114
2 1/2"	GN-35/S3	302,5	184	246	131
3"	GN-40/S4	313,5	184	290	131
4"	GN-45/S4	343	198	351	145
6"	GN-55/S5	482	232	418	181
8"	GN-65/S5	687	287	502	230

Gen-Air Doble efecto / Gen-Air Double acting				
5528A 04 44	1/2"	GN-05	2,300	-
5528A 05 44	3/4"	GN-05	2,950	-
5528A 06 44	1"	GN-05	3,700	-
5528A 07 63	1 1/4"	GN-15	6,000	-
5528A 08 63	1 1/2"	GN-15	7,630	-
5528A 09 52	2"	GN-17	10,750	-
5528A 10 64	2 1/2"	GN-20	16,270	-
5528A 11 65	3"	GN-25	21,800	-
5528A 12 67	4"	GN-35	37,360	-
5528A 14 97	6"	GN-50	90,460	-
5528A 16 84	8"	GN-55	134,280	-
Gen-Air Simple efecto / Gen-Air Spring return				
5528A 04 73	1/2"	GN-15/S3	3,470	-
5528A 05 74	3/4"	GN-15/S4	4,120	-
5528A 06 49	1"	GN-17/S4	5,440	-
5528A 07 76	1 1/4"	GN-20/S4	7,150	-
5528A 08 77	1 1/2"	GN-25/S4	10,280	-
5528A 09 78	2"	GN-30/S4	13,970	-
5528A 10 79	2 1/2"	GN-35/S3	22,420	-
5528A 11 80	3"	GN-40/S4	28,510	-
5528A 12 81	4"	GN-45/S4	45,520	-
5528A 14 83	6"	GN-55/S5	105,000	-
5528A 16 93	8"	GN-65/S5	165,050	-

CÓDIGO CODE	MEDIDA SIZE	TIPO ACT. ACT. TYPE	PESO WEIGHT	P.V.P. € PRICE €
----------------	----------------	------------------------	----------------	---------------------

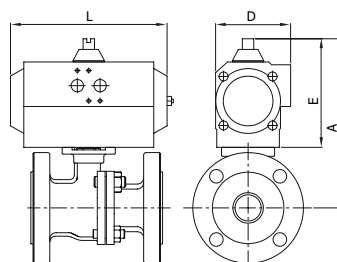
Ref. 5528A

**Válvula esfera 2 piezas bridada**

Características de válvula ver art. 2528A.

**2 pieces ball valve with flanges**

Valve characteristics see art. 2528A.



GNP					
Medida/Size	MOD. ACT	A	E	L	D
1/2"	GNP-14	126,5	80	122	65
3/4"	GNP-14	131,5	80	122	65
1"	GNP-14	137,5	80	122	65
1 1/4"	GNP-44	189	117,5	168	83
1 1/2"	GNP-44	194	117,5	168	83
2"	GNP-44	201	117,5	168	83
2 1/2"	GNP-94	258	138,5	204	103
3"	GNP-94	268	138,5	204	103
4"	GNP-198	308	163	268	121,5
6"	GNP-513	451,5	201,5	390	152
8"	GNP-800	627	227	454	174

GNP					
Medida/Size	MOD. ACT	A	E	L	D
1/2"	GNP-24/S4	148	102	147	71,5
3/4"	GNP-44/S4	169	117,5	168	83
1"	GNP-44/S5	175	117,5	168	83
1 1/4"	GNP-60/S5	201	129,5	184	92
1 1/2"	GNP-94/S5	215	138,5	204	103
2"	GNP-135/S5	230,5	147	262	108,5
2 1/2"	GNP-198/S4	281,5	163	268	121,5
3"	GNP-300/S5	314,5	185	296	142
4"	GNP-513/S5	346,5	201,5	390	152
6"	GNP-1280/S5	510	260	525	206
8"	GNP-2300/S5	718	318	610	260

GNP Doble efecto / GNP Double acting				
5528A 04 122	1/2"	GNP-14	2,250	-
5528A 05 122	3/4"	GNP-14	2,900	-
5528A 06 122	1"	GNP-14	3,650	-
5528A 07 128	1 1/4"	GNP-44	6,270	-
5528A 08 128	1 1/2"	GNP-44	7,900	-
5528A 09 128	2"	GNP-44	9,860	-
5528A 10 142	2 1/2"	GNP-94	16,700	-
5528A 11 142	3"	GNP-94	21,150	-
5528A 12 150	4"	GNP-198	35,680	-
5528A 14 162	6"	GNP-513	66,200	-
5528A 16 166	8"	GNP-800	131,100	-
GNP Simple efecto / GNP Spring return				
5528A 04 126	1/2"	GNP-24/S4	2,950	-
5528A 05 132	3/4"	GNP-44/S4	4,300	-
5528A 06 136	1"	GNP-44/S4	5,050	-
5528A 07 140	1 1/4"	GNP-60/S5	6,800	-
5528A 08 144	1 1/2"	GNP-94/S5	9,400	-
5528A 09 148	2"	GNP-135/S5	13,900	-
5528A 10 152	2 1/2"	GNP-198/S4	20,100	-
5528A 11 160	3"	GNP-300/S5	28,200	-
5528A 12 164	4"	GNP-513/S5	44,900	-
5528A 14 172	6"	GNP-1280/S5	124,100	-
5528A 16 178	8"	GNP-2300/S5	185,950	-

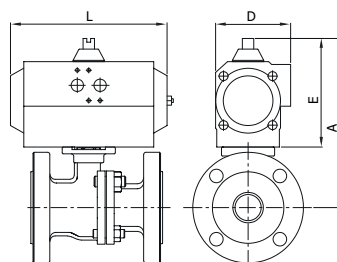
Ref. 5529

**Válvula esfera 2 piezas bridada**

Características de válvula ver art. 2529.

**2 pieces ball valve with flanges**

Valve characteristics see art. 2529.



GN					
Medida/Size	MOD. ACT	A	E	L	D
2 1/2"	GN-20	247	128	177	96
3"	GN-25	258	128	239	96
4"	GN-35	329	184	246	131
5"	GN-50	390	232	361	181
6"	GN-50	407	232	361	181

GN					
Medida/Size	MOD. ACT	A	E	L	D
2 1/2"	GN-35/S3	303	184	246	131
3"	GN-40/S4	313	184	290	131
4"	GN-45/S4	343	198	351	145
5"	GN-55/S4	390	232	418	181
6"	GN-55/S5	407	232	418	181

Gen-Air Doble efecto / Gen-Air Double acting				
5529 10 64	2 1/2"	GN-20	20,700	-
5529 11 65	3"	GN-25	28,480	-
5529 12 67	4"	GN-35	38,460	-
5529 13 97	5"	GN-50	74,480	-
5529 14 97	6"	GN-50	84,000	-
Gen-Air Simple efecto / Gen-Air Spring return				
5529 10 79	2 1/2"	GN-35/S3	32,200	-
5529 11 80	3"	GN-40/S4	35,510	-
5529 12 81	4"	GN-45/S4	47,920	-
5529 13 82	5"	GN-55/S4	99,550	-
5529 14 83	6"	GN-55/S5	118,500	-

03 AUTOMATIZACIÓN & CONTROL  
AUTOMATION & CONTROL

# LÍNEA INDUSTRIAL / INDUSTRIAL LINE

Ref. 5529



### Válvula esfera 2 piezas bridada

Características de válvula ver art. 2529.

### 2 pieces ball valve with flanges

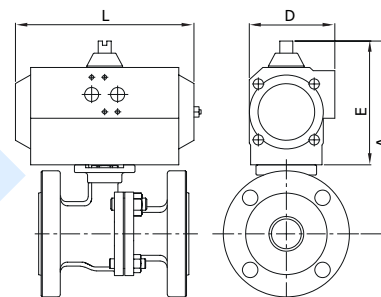
Valve characteristics see art. 2529.

GNP					
Medida/Size	MOD. ACT	A	E	L	D
2 1/2"	GNP-60	292,5	129,5	184	92
3"	GNP-94	303,5	138,5	204	103
4"	GNP-198	294	163	268	121,5
5"	GNP-513	402	201,5	390	152
6"	GNP-513	451,5	201,5	390	152

GNP					
Medida/Size	MOD. ACT	A	E	L	D
2 1/2"	GNP-198/S5	326	163	268	121,5
3"	GNP-300/S5	350	185	296	142
4"	GNP-513/S5	385,5	201,5	390	152
5"	GNP-1280/S5	510	260	525	206
6"	GNP-1280/S5	510	260	525	206

CÓDIGO CODE	MEDIDA SIZE	TIPO ACT. ACT. TYPE	PESO WEIGHT	P.V.P. € PRICE €
-------------	-------------	---------------------	-------------	------------------

GNP Doble efecto / GNP Double acting				
5529 10 138	2 1/2"	GNP-60	20,530	-
5529 11 142	3"	GNP-94	27,780	-
5529 12 150	4"	GNP-198	36,780	-
5529 13 162	5"	GNP-513	68,550	-
5529 14 162	6"	GNP-513	75,700	-
GNP Simple efecto / GNP Spring return				
5529 10 152	2 1/2"	GNP-198/S4	29,880	-
5529 11 160	3"	GNP-300/S5	35,200	-
5529 12 164	4"	GNP-513/S5	47,300	-
5529 13 172	5"	GNP-1280/S5	118,650	-
5529 14 172	6"	GNP-1280/S5	137,600	-



Ref. 5105



### Válvula esfera 1 pieza tipo wafer

Características de válvula ver art. 2105.

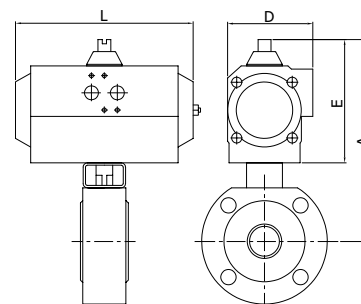
### 1 piece full bore ball valve mounting between flanges PN-16 - wafer type

Valve characteristics see art. 2105.

GNP					
Medida/Size	MOD. ACT	A	E	L	D
1"	GNP-44	242,5	117,5	168	83
1 1/4"	GNP-60	274,5	129,5	184	92
1 1/2"	GNP-60	288,5	129,5	184	92
2"	GNP-60	302,5	129,5	184	92
2 1/2"	GNP-94	337,5	138,5	204	103
3"	GNP-94	367,5	138,5	204	103
4"	GNP-300	449	185	296	142

GNP					
Medida/Size	MOD. ACT	A	E	L	D
1"	GNP-60/S5	254,5	129,5	184	92
1 1/4"	GNP-94/S5	283,5	138,5	204	103
1 1/2"	GNP-94/S5	297,5	138,5	204	103
2"	GNP-198/S4	336	163	268	121,5
2 1/2"	GNP-300/S5	384	185	296	142
3"	GNP-513/S5	430,5	201,5	390	152
4"	GNP-1280/S5	524	260	525	206

GNP Doble efecto / GNP Double acting				
5105 06 128	1"	GNP-44	4,830	-
5105 07 138	1 1/4"	GNP-60	6,500	-
5105 08 138	1 1/2"	GNP-60	9,200	-
5105 09 138	2"	GNP-60	10,700	-
5105 10 142	2 1/2"	GNP-94	18,300	-
5105 11 142	3"	GNP-94	23,300	-
5105 12 158	4"	GNP-300	38,700	-
GNP Simple efecto / GNP Spring return				
5105 06 140	1"	GNP-60/S5	5,600	-
5105 07 144	1 1/4"	GNP-94/S5	6,170	-
5105 08 144	1 1/2"	GNP-94/S5	10,100	-
5105 09 152	2"	GNP-198/S4	14,700	-
5105 10 160	2 1/2"	GNP-300/S5	25,400	-
5105 11 164	3"	GNP-513/S5	34,800	-
5105 12 172	4"	GNP-1280/S5	76,500	-



CÓDIGO CODE	MEDIDA SIZE	TIPO ACT. ACT. TYPE	PESO WEIGHT	P.V.P. € PRICE €
----------------	----------------	------------------------	----------------	---------------------

Ref. 5115

**Válvula esfera 1 pieza tipo wafer con cámara de calefacción**

Características de válvula ver art. 2115.

**1 piece full bore ball valve with heating chamber. Mounting between flanges PN-16 wafer type**

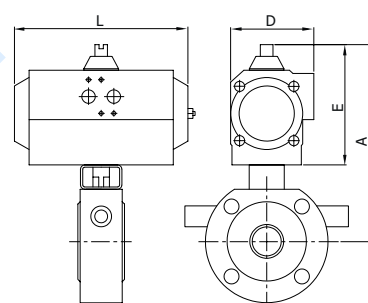
Valve characteristics see art. 2115.



GNP					
Medida/Size	MOD. ACT	A	E	L	D
1"	GNP-44	242,5	117,5	168	83
1 1/4"	GNP-60	274,5	129,5	184	92
1 1/2"	GNP-60	288,5	129,5	184	92
2"	GNP-60	302,5	129,5	184	92
2 1/2"	GNP-94	337,5	138,5	204	103
3"	GNP-94	367,5	138,5	204	103
4"	GNP-300	449	185	296	142

GNP					
Medida/Size	MOD. ACT	A	E	L	D
1"	GNP-60/S5	254,5	129,5	184	92
1 1/4"	GNP-94/S5	283,5	138,5	204	103
1 1/2"	GNP-94/S5	297,5	138,5	204	103
2"	GNP-198/S4	336	163	268	121,5
2 1/2"	GNP-300/S5	384	185	296	142
3"	GNP-513/S5	430,5	201,5	390	152
4"	GNP-1280/S5	524	260	525	206

GNP Doble efecto / GNP Double acting				
5115 06 128	1"	GNP-44	4,830	-
5115 07 138	1 1/4"	GNP-60	6,500	-
5115 08 138	1 1/2"	GNP-60	9,200	-
5115 09 138	2"	GNP-60	10,700	-
5115 10 142	2 1/2"	GNP-94	18,300	-
5115 11 142	3"	GNP-94	23,300	-
5115 12 158	4"	GNP-300	38,700	-
GNP Simple efecto / GNP Spring return				
5115 06 140	1"	GNP-60/S5	5,600	-
5115 07 144	1 1/4"	GNP-94/S5	6,170	-
5115 08 144	1 1/2"	GNP-94/S5	10,100	-
5115 09 152	2"	GNP-198/S4	14,700	-
5115 10 160	2 1/2"	GNP-300/S5	25,400	-
5115 11 164	3"	GNP-513/S5	34,800	-
5115 12 172	4"	GNP-1280/S5	76,500	-



Ref. 5118

**Válvula esfera 1 pieza tipo wafer**

Características de válvula ver art. 2118.

**1 piece full ball valve wafer type**

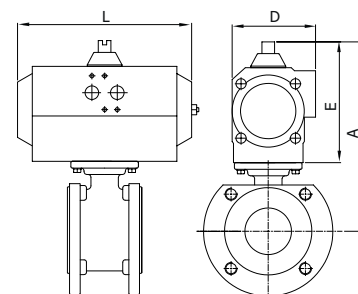
Valve characteristics see art. 2118.



GNP					
Medida/Size	MOD. ACT	A	E	L	D
1/2"	GNP-14	185	80	122	65
3/4"	GNP-14	195	80	122	65
1"	GNP-14	138	80	122	65
1 1/4"	GNP-44	188	118	168	83
1 1/2"	GNP-44	195	118	168	83
2"	GNP-44	203	118	168	83
2 1/2"	GNP-94	234	139	204	103
3"	GNP-94	250	139	204	103
4"	GNP-198	286	163	268	121,5

GNP					
Medida/Size	MOD. ACT	A	E	L	D
1/2"	GNP-44/S4	222,5	117,5	168	83
3/4"	GNP-44/S4	232,5	117,5	168	83
1"	GNP-44/S5	175,5	117,5	168	83
1 1/4"	GNP-60/S5	199,5	129,5	184	92
1 1/2"	GNP-94/S5	215,5	138,5	204	103
2"	GNP-135/S5	232	147	262	108,5
2 1/2"	GNP-198/S4	258	163	268	121,5
3"	GNP-300/S5	296	185	296	142
4"	GNP-513/S5	324,5	201,5	390	152

GNP Doble efecto / GNP Double acting				
5118 04 122	1/2"	GNP-14	2,450	-
5118 05 122	3/4"	GNP-14	2,650	-
5118 06 122	1"	GNP-14	3,280	-
5118 07 128	1 1/4"	GNP-44	5,820	-
5118 08 128	1 1/2"	GNP-44	6,450	-
5118 09 128	2"	GNP-44	7,550	-
5118 10 142	2 1/2"	GNP-94	11,000	-
5118 11 142	3"	GNP-94	13,600	-
5118 12 150	4"	GNP-198	23,180	-
GNP Simple efecto / GNP Spring return				
5118 04 134	1/2"	GNP-44/S4	3,850	-
5118 05 134	3/4"	GNP-44/S4	4,050	-
5118 06 136	1"	GNP-44/S5	4,680	-
5118 07 140	1 1/4"	GNP-60/S5	6,350	-
5118 08 144	1 1/2"	GNP-94/S5	7,950	-
5118 09 148	2"	GNP-135/S5	10,950	-
5118 10 152	2 1/2"	GNP-198/S4	14,400	-
5118 11 160	3"	GNP-300/S5	20,400	-
5118 12 164	4"	GNP-513/S5	32,400	-





# LÍNEA INDUSTRIAL / INDUSTRIAL LINE

CÓDIGO CODE	MEDIDA SIZE	TIPO ACT. ACT. TYPE	PESO WEIGHT	P.V.P. € PRICE €
----------------	----------------	------------------------	----------------	---------------------

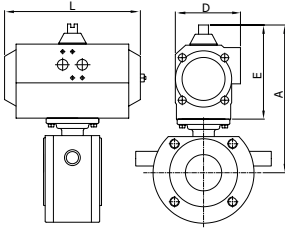
Ref. 5519

## Válvula esfera 1 pieza tipo wafer con cámara de calefacción

Características de válvula ver art. 2119.

### 1 piece ball valve with heating chamber

Valve characteristics see art. 2119.



GNP					
Medida/Size	MOD. ACT	A	E	L	D
1/2"	GNP-14	185	80	122	65
3/4"	GNP-14	195	80	122	65
1"	GNP-14	138	80	122	65
1 1/4"	GNP-44	188	118	168	83
1 1/2"	GNP-44	195	118	168	83
2"	GNP-44	203	118	168	83
2 1/2"	GNP-94	234	139	204	103
3"	GNP-94	250	139	204	103
4"	GNP-198	286	163	268	121,5

GNP					
Medida/Size	MOD. ACT	A	E	L	D
1/2"	GNP-44/S4	222,5	117,5	168	83
3/4"	GNP-44/S4	232,5	117,5	168	83
1"	GNP-44/S5	175,5	117,5	168	83
1 1/4"	GNP-60/S5	199,5	129,5	184	92
1 1/2"	GNP-94/S5	215,5	138,5	204	103
2"	GNP-135/S5	232	147	262	108,5
2 1/2"	GNP-198/S4	258	163	268	121,5
3"	GNP-300/S5	296	185	296	142
4"	GNP-513/S5	324,5	201,5	390	152

GNP Doble efecto / GNP Double acting				
5519 04 122	1/2"	GNP-14	2,550	-
5519 05 122	3/4"	GNP-14	2,760	-
5519 06 122	1"	GNP-14	3,430	-
5519 07 128	1 1/4"	GNP-44	6,070	-
5519 08 128	1 1/2"	GNP-44	8,000	-
5519 09 128	2"	GNP-44	8,000	-
5519 10 142	2 1/2"	GNP-94	11,750	-
5519 11 142	3"	GNP-94	14,600	-
5519 12 150	4"	GNP-198	24,480	-
GNP Simple efecto / GNP Spring return				
5519 04 134	1/2"	GNP-44/S4	3,850	-
5519 05 134	3/4"	GNP-44/S4	4,050	-
5519 06 136	1"	GNP-44/S5	4,680	-
5519 07 140	1 1/4"	GNP-60/S5	6,350	-
5519 08 144	1 1/2"	GNP-94/S5	7,950	-
5519 09 148	2"	GNP-135/S5	10,950	-
5519 10 152	2 1/2"	GNP-198/S4	14,400	-
5519 11 160	3"	GNP-300/S5	20,700	-
5519 12 164	4"	GNP-513/S5	32,400	-

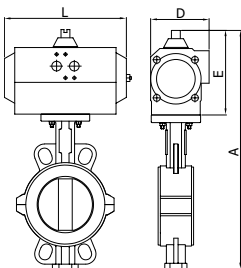
Ref. 5111

## Válvula mariposa tipo wafer

Características de válvula ver art. 2101.

### Butterfly valve wafer type

Valve characteristics see art. 2101.



GNP					
Medida/Size	MOD. ACT	A	E	L	D
2"	GNP-44	337,5	117,5	168	83
2 1/2"	GNP-44	356,5	117,5	168	83
3"	GNP-60	382,5	129,5	184	92
4"	GNP-94	428,5	138,5	204	103
5"	GNP-198	480	163	268	121,5
6"	GNP-300	534	185	296	142
8"	GNP-513	612,5	201,5	390	152

GNP					
Medida/Size	MOD. ACT	A	E	L	D
2"	GNP-94/S5	358,5	138,5	204	103
2 1/2"	GNP-94/S5	377,5	138,5	204	103
3"	GNP-135/S5	400	147	262	108,5
4"	GNP-198/S6	453	163	268	121,5
5"	GNP-513/S5	518,5	201,5	390	152
6"	GNP-800/S5	576	227	454	174
8"	GNP-1280/S5	671	260	525	206

GNP Doble efecto / GNP Double acting				
5111 09 128	2"	GNP-44	6,120	-
5111 10 128	2 1/2"	GNP-44	6,380	-
5111 11 138	3"	GNP-60	7,540	-
5111 12 142	4"	GNP-94	8,560	-
5111 13 150	5"	GNP-198	13,570	-
5111 14 158	6"	GNP-300	16,240	-
5111 16 162	8"	GNP-513	33,578	-
GNP Simple efecto / GNP Spring return				
5111 09 144	2"	GNP-94/S5	7,620	-
5111 10 144	2 1/2"	GNP-94/S5	7,880	-
5111 11 148	3"	GNP-135/S5	10,340	-
5111 12 156	4"	GNP-198/S6	13,330	-
5111 13 164	5"	GNP-513/S5	22,070	-
5111 14 168	6"	GNP-800/S5	30,640	-
5111 16 172	8"	GNP-1280/S5	60,080	-



CÓDIGO CODE	MEDIDA SIZE	TIPO ACT. ACT. TYPE	PESO WEIGHT	P.V.P. € PRICE €
----------------	----------------	------------------------	----------------	---------------------

Ref. 5113

**Válvula mariposa tipo wafer**

Características de válvula ver art. 2103.

**Butterfly valve wafer type**

Valve characteristics see art. 2103.



GN					
Medida/Size	MOD. ACT	A	E	L	D
2"	GN-15	350	111	165	81
2 1/2"	GN-15	364	111	165	81
3"	GN-17	379	111	197	81
4"	GN-20	433	128	177	96
5"	GN-25	470	128	239	96
6"	GN-25	496	128	239	96
8"	GN-35	614	184	246	131
10"	GN-40	695	184	290	131
12"	GN-45	769	198	351	145
14"	GN-60	787	287	420	230
16"	GN-60	857	287	420	230
18"	GN-65	912	287	502	230
20"	GN-70	1061	358	611	338

GN					
Medida/Size	MOD. ACT	A	E	L	D
2"	GN-17/S5	350	111	197	81
2 1/2"	GN-25/S5	381	128	239	96
3"	GN-30/S4	415	147	230	114
4"	GN-30/S5	452	147	230	114
5"	GN-35/S4	527	184	246	131
6"	GN-35/S5	552	184	246	131
8"	GN-45/S4	628	198	351	145
10"	GN-50/S4	743	232	361	181
12"	GN-55/S6	803	232	418	181
14"	GN-70/S5	858	358	611	338
16"	GN-70/S6	928	358	611	338

Gen-Air Doble efecto / Gen-Air Double acting				
5113 09 48	2"	GN-15	6,230	-
5113 10 48	2 1/2"	GN-15	6,730	-
5113 11 53	3"	GN-17	7,610	-
5113 12 64	4"	GN-20	10,030	-
5113 13 65	5"	GN-25	13,070	-
5113 14 65	6"	GN-25	14,100	-
5113 16 67	8"	GN-35	23,480	-
5113 18 68	10"	GN-40	31,230	-
5113 20 69	12"	GN-45	45,400	-
5113 22 57	14"	GN-60	87,500	-
5113 24 54	16"	GN-60	108,000	-
5113 26 58	18"	GN-65	161,300	-
5113 28 100	20"	GN-70	219,000	-
Gen-Air Simple efecto / Gen-Air Spring return				
5113 09 51	2"	GN-17/S5	5,560	-
5113 10 85	2 1/2"	GN-25/S5	9,380	-
5113 11 78	3"	GN-30/S4	10,970	-
5113 12 86	4"	GN-30/S5	12,870	-
5113 13 87	5"	GN-35/S4	16,700	-
5113 14 88	6"	GN-35/S5	19,520	-
5113 16 81	8"	GN-45/S4	26,920	-
5113 18 95	10"	GN-50/S4	41,130	-
5113 20 90	12"	GN-55/S6	59,400	-
5113 22 101	14"	GN-70/S5	139,000	-
5113 24 102	16"	GN-70/S6	153,700	-

Ref. 5113

**Válvula mariposa tipo wafer**

Características de válvula ver art. 2103.

**Butterfly valve wafer type**

Valve characteristics see art. 2103.



GNP					
Medida/Size	MOD. ACT	A	E	L	D
2"	GNP-44	356,5	117,5	168	83
2 1/2"	GNP-44	370,5	117,5	168	83
3"	GNP-44	385,5	117,5	168	83
4"	GNP-60	434,5	129,5	184	92
5"	GNP-94	481,5	138,5	204	103
6"	GNP-94	506,5	138,5	204	103
8"	GNP-198	593	163	268	121,5
10"	GNP-300	696	185	296	142
12"	GNP-513	772,5	201,5	390	152
14"	GNP-1280	760	260	525	206
16"	GNP-1280	830	260	525	206
18"	GNP-1600	910	285	532	226
20"	GNP-2300	1021	318	610	260

GNP					
Medida/Size	MOD. ACT	A	E	L	D
2"	GNP-44/S4	356,5	117,5	168	83
2 1/2"	GNP-94/S5	391,5	138,5	204	103
3"	GNP-135/S5	415	147	262	108,5
4"	GNP-135/S5	452	147	262	108,5
5"	GNP-198/S5	506	163	268	121,5
6"	GNP-198/S6	531	163	268	121,5
8"	GNP-513/S5	631,5	201,5	390	152
10"	GNP-800/S5	738	227	454	174
12"	GNP-1280/S5	831	260	525	206
14"	GNP-2500/S5	856	356	722	294
16"	GNP-2500/S5	926	356	722	294
18"	GNP-3000/S6	1035	378	772	406
20"	GNP-3500/S5	1140	410	870	460

GNP Doble efecto / GNP Double acting				
5113 09 128	2"	GNP-44	4,544	-
5113 10 128	2 1/2"	GNP-44	5,400	-
5113 11 128	3"	GNP-44	7,360	-
5113 12 138	4"	GNP-60	8,000	-
5113 13 142	5"	GNP-94	10,700	-
5113 14 142	6"	GNP-94	11,230	-
5113 16 150	8"	GNP-198	21,800	-
5113 18 158	10"	GNP-300	28,700	-
5113 20 162	12"	GNP-513	40,700	-
5113 22 171	14"	GNP-1280	75,450	-
5113 24 170	16"	GNP-1280	92,850	-
5113 26 174	18"	GNP-1600	162,600	-
5113 28 176	20"	GNP-2300	211,200	-
GNP Simple efecto / GNP Spring return				
5113 09 132	2"	GNP-44/S4	4,650	-
5113 10 144	2 1/2"	GNP-94/S5	6,900	-
5113 11 148	3"	GNP-135/S5	9,300	-
5113 12 148	4"	GNP-135/S5	11,500	-
5113 13 154	5"	GNP-198/S5	13,426	-
5113 14 156	6"	GNP-198/S6	15,700	-
5113 16 164	8"	GNP-513/S5	28,468	-
5113 18 168	10"	GNP-800/S5	44,500	-
5113 20 172	12"	GNP-1280/S5	63,105	-
5113 22 180	14"	GNP-2500/S5	144,550	-
5113 24 180	16"	GNP-2500/S5	117,500	-
5113 26 185	18"	GNP-3000/S6	267,000	-
5113 28 190	20"	GNP-3500/S5	395,000	-

03 AUTOMATIZACIÓN & CONTROL  
AUTOMATION & CONTROL

# LÍNEA INDUSTRIAL / INDUSTRIAL LINE

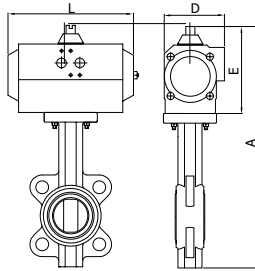
Ref. 5119

## Válvula mariposa tipo wafer

Características de válvula ver art. 2109.

### Butterfly valve wafer type

Valve characteristics see art. 2109.



GN					
Medida/Size	MOD. ACT	A	E	L	D
2"	GN-15	350	111	165	81
2 1/2"	GN-15	364	111	165	81
3"	GN-17	379	111	197	81
4"	GN-20	433	128	177	96
5"	GN-25	470	128	239	96
6"	GN-25	496	128	239	96
8"	GN-35	614	184	246	131
10"	GN-40	695	184	290	131
12"	GN-45	769	198	351	145
14"	GN-60	787	287	420	230
16"	GN-60	857	287	420	230
18"	GN-65	912	287	502	230
20"	GN-70	1061	358	611	338

GN					
Medida/Size	MOD. ACT	A	E	L	D
2"	GN-17/S5	350	111	197	81
2 1/2"	GN-25/S5	381	128	239	96
3"	GN-30/S4	415	147	230	114
4"	GN-30/S5	452	147	230	114
5"	GN-35/S4	527	184	246	131
6"	GN-35/S5	552	184	246	131
8"	GN-45/S4	628	198	351	145
10"	GN-50/S4	743	232	361	181
12"	GN-55/S6	803	232	418	181
14"	GN-70/S5	858	358	611	338
16"	GN-70/S6	928	358	611	338

CÓDIGO CODE	MEDIDA SIZE	TIPO ACT. ACT. TYPE	PESO WEIGHT	P.V.P. € PRICE €
----------------	----------------	------------------------	----------------	---------------------

Gen-Air Doble efecto / Gen-Air Double acting				
5119 09 48	2"	GN-15	6,230	-
5119 10 48	2 1/2"	GN-15	6,730	-
5119 11 53	3"	GN-17	7,610	-
5119 12 64	4"	GN-20	10,030	-
5119 13 65	5"	GN-25	13,070	-
5119 14 65	6"	GN-25	14,100	-
5119 16 67	8"	GN-35	23,480	-
5119 18 68	10"	GN-40	31,230	-
5119 20 69	12"	GN-45	45,400	-
5119 22 57	14"	GN-60	87,500	-
5119 24 54	16"	GN-60	108,000	-
5119 26 58	18"	GN-65	164,000	-
5119 28 100	20"	GN-70	219,000	-
Gen-Air Simple efecto / Gen-Air Spring return				
5119 09 51	2"	GN-17/S5	5,560	-
5119 10 85	2 1/2"	GN-25/S5	9,380	-
5119 11 78	3"	GN-30/S4	10,970	-
5119 12 86	4"	GN-30/S5	12,870	-
5119 13 87	5"	GN-35/S4	16,700	-
5119 14 88	6"	GN-35/S5	19,520	-
5119 16 81	8"	GN-45/S4	29,400	-
5119 18 95	10"	GN-50/S4	41,130	-
5119 20 90	12"	GN-55/S6	59,400	-
5119 22 101	14"	GN-70/S5	139,000	-
5119 24 102	16"	GN-70/S6	153,700	-

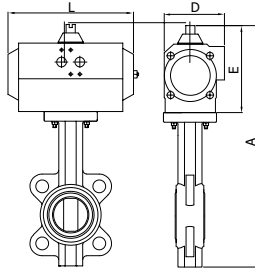
Ref. 5119

## Válvula mariposa tipo wafer

Características de válvula ver art. 2109.

### Butterfly valve wafer type

Valve characteristics see art. 2109.



GNP					
Medida/Size	MOD. ACT	A	E	L	D
2"	GNP-44	356,5	117,5	168	83
2 1/2"	GNP-44	370,5	117,5	168	83
3"	GNP-44	385,5	117,5	168	83
4"	GNP-60	434,5	129,5	184	92
5"	GNP-94	481,5	138,5	204	103
6"	GNP-94	506,5	138,5	204	103
8"	GNP-198	593	163	268	121,5
10"	GNP-300	696	185	296	142
12"	GNP-513	772,5	201,5	390	152
14"	GNP-1280	760	260	260	206
16"	GNP-1280	830	260	525	206
18"	GNP-1600	910	285	532	226
20"	GNP-2300	1021	318	610	260

GNP					
Medida/Size	MOD. ACT	A	E	L	D
2"	GNP-44/S4	356,5	117,5	168	83
2 1/2"	GNP-94/S5	391,5	138,5	204	103
3"	GNP-135/S5	415	147	262	108,5
4"	GNP-135/S5	452	147	262	108,5
5"	GNP-198/S5	506	163	268	121,5
6"	GNP-198/S6	531	163	268	121,5
8"	GNP-513/S5	631,5	201,5	390	152
10"	GNP-800/S5	738	227	454	174
12"	GNP-1280/S5	831	260	525	206
14"	GNP-2500/S5	856	356	722	294
16"	GNP-2500/S5	926	356	722	294
18"	GNP-3000/S6	1035	378	772	406
20"	GNP-3500/S5	1140	410	870	460

GNP Doble efecto / GNP Double acting				
5119 09 128	2"	GNP-44	4,900	-
5119 10 128	2 1/2"	GNP-44	5,400	-
5119 11 128	3"	GNP-44	5,400	-
5119 12 138	4"	GNP-60	7,800	-
5119 13 142	5"	GNP-94	10,500	-
5119 14 142	6"	GNP-94	10,810	-
5119 16 150	8"	GNP-198	19,130	-
5119 18 158	10"	GNP-300	30,200	-
5119 20 162	12"	GNP-513	41,070	-
5119 22 171	14"	GNP-1280	74,250	-
5119 24 170	16"	GNP-1280	116,700	-
5119 26 174	18"	GNP-1600	124,100	-
5119 28 176	20"	GNP-2300	165,850	-
GNP Simple efecto / GNP Spring return				
5119 09 132	2"	GNP-44/S4	5,170	-
5119 10 144	2 1/2"	GNP-94/S5	6,900	-
5119 11 148	3"	GNP-135/S5	10,900	-
5119 12 148	4"	GNP-135/S5	12,800	-
5119 13 154	5"	GNP-198/S5	14,380	-
5119 14 156	6"	GNP-198/S6	17,200	-
5119 16 164	8"	GNP-513/S5	28,800	-
5119 18 168	10"	GNP-800/S5	44,500	-
5119 20 172	12"	GNP-1280/S5	83,600	-
5119 22 180	14"	GNP-2500/S5	143,350	-
5119 24 180	16"	GNP-2500/S5	163,820	-
5119 26 185	18"	GNP-3000/S6	267,000	-
5119 28 190	20"	GNP-3500/S5	395,000	-

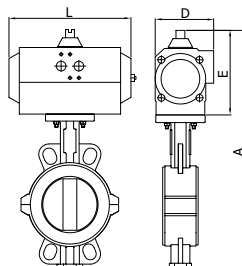
Válvula con elastómero NBR (5119B), Precios a consultar. /  
NBR elastomer valve (5119B), Prices on request.

Ref. 5114

**Válvula mariposa tipo wafer inoxidable**

Características de válvula ver art. 2104.

**Stainless steel butterfly valve wafer type**  
Valve characteristics see art. 2104.



GN					
Medida/Size	MOD. ACT	A	E	L	D
2"	GN-15	321	111	165	81
2 1/2"	GN-17	331	111	197	81
3"	GN-20	356	128	177	96
4"	GN-25	402	128	239	96
5"	GN-35	490	184	246	131
6"	GN-40	519	184	290	131
8"	GN-50	641	232	361	181
10"	GN-55	706	232	428	181

GN					
Medida/Size	MOD. ACT	A	E	L	D
2"	GN-25/S4	338	128	239	96
2 1/2"	GN-25/S5	348	128	239	96
3"	GN-30/S4	375	147	230	114
4"	GN-35/S5	458	184	246	131
5"	GN-45/S5	504	198	351	145
6"	GN-50/S5	567	232	361	181
8"	GN-55/S5	698	287	418	181

CÓDIGO CODE	MEDIDA SIZE	TIPO ACT. ACT. TYPE	PESO WEIGHT	P.V.P. € PRICE €
-------------	-------------	---------------------	-------------	------------------

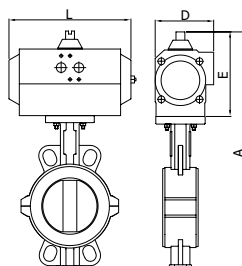
Gen-Air Doble efecto / Gen-Air Double acting				
5114 09 63	2"	GN-15	5,630	-
5114 10 52	2 1/2"	GN-17	6,570	-
5114 11 64	3"	GN-20	7,770	-
5114 12 65	4"	GN-25	10,500	-
5114 13 67	5"	GN-35	15,780	-
5114 14 68	6"	GN-40	18,630	-
5114 16 97	8"	GN-50	32,500	-
5114 18 84	10"	GN-55	47,100	-
Gen-Air Simple efecto / Gen-Air Spring return				
5114 09 77	2"	GN-25/S4	8,280	-
5114 10 85	2 1/2"	GN-25/S5	8,880	-
5114 11 78	3"	GN-30/S4	10,470	-
5114 12 88	4"	GN-35/S5	15,520	-
5114 13 89	5"	GN-45/S5	23,220	-
5114 14 98	6"	GN-50/S5	32,230	-
5114 16 99	8"	GN-55/S5	60,600	-

Ref. 5114

**Válvula mariposa tipo wafer inoxidable**

Características de válvula ver art. 2104.

**Stainless steel butterfly valve wafer type**  
Valve characteristics see art. 2104.



GNP					
Medida/Size	MOD. ACT	A	E	L	D
2"	GNP-44	327,5	117,5	168	83
2 1/2"	GNP-44	337,5	117,5	168	83
3"	GNP-60	357,5	129,5	184	92
4"	GNP-94	412,5	138,5	204	103
5"	GNP-198	469	163	268	121,5
6"	GNP-300	520	185	296	142
8"	GNP-513	610,5	201,5	390	152
10"	GNP-800	701,0	227,0	454	174

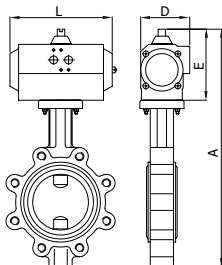
GNP					
Medida/Size	MOD. ACT	A	E	L	D
2"	GNP-94/S5	348,5	138,5	204	103
2 1/2"	GNP-94/S5	358,5	138,5	204	103
3"	GNP-135/S5	375	147	262	108,5
4"	GNP-198/S6	437	163	268	121,5
5"	GNP-513/S5	507,5	201,5	390	152
6"	GNP-800/S5	562	227	454	174
8"	GNP-1280/S5	669	260	525	206

GNP Doble efecto / GNP Double acting				
5114 09 128	2"	GNP-44	4,500	-
5114 10 128	2 1/2"	GNP-44	5,050	-
5114 11 138	3"	GNP-60	7,600	-
5114 12 142	4"	GNP-94	9,800	-
5114 13 150	5"	GNP-198	14,100	-
5114 14 158	6"	GNP-300	18,600	-
5114 16 162	8"	GNP-513	26,700	-
5114 18 166	10"	GNP-800	45,200	-
GNP Simple efecto / GNP Spring return				
5114 09 144	2"	GNP-94/S5	6,050	-
5114 10 144	2 1/2"	GNP-94/S5	8,000	-
5114 11 148	3"	GNP-135/S5	10,400	-
5114 12 156	4"	GNP-198/S6	13,200	-
5114 13 164	5"	GNP-513/S5	22,600	-
5114 14 168	6"	GNP-800/S5	32,900	-
5114 16 172	8"	GNP-1280/S5	60,800	-

03 AUTOMATIZACIÓN & CONTROL  
AUTOMATION & CONTROL

# LÍNEA INDUSTRIAL / INDUSTRIAL LINE

Ref. 5508



### Válvula mariposa tipo LUG (bridas DIN)

Características de válvula ver art. 2108.

#### Butterfly valve LUG type (DIN flanges)

Valve characteristics see art. 2108.

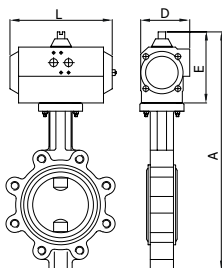
GN					
Medida/Size	MOD. ACT	A	E	L	D
2"	GN-15	351	111	165	81
2 1/2"	GN-15	364	111	165	81
3"	GN-17	379	111	197	81
4"	GN-20	433	128	177	96
5"	GN-25	471	128	239	96
6"	GN-25	496	128	239	96
8"	GN-35	614	184	246	131
10"	GN-40	695	184	290	131
12"	GN-45	770	198	351	145

GN					
Medida/Size	MOD. ACT	A	E	L	D
2"	GN-17/S5	351	111	197	81
2 1/2"	GN-25/S5	381	128	239	96
3"	GN-30/S4	415	147	230	114
4"	GN-30/S5	452	147	230	114
5"	GN-35/S4	527	184	246	131
6"	GN-35/S5	552	184	246	131
8"	GN-45/S4	628	198	351	145
10"	GN-50/S4	743	232	361	181
12"	GN-55/S6	804	232	418	181

CÓDIGO CODE	MEDIDA SIZE	TIPO ACT. ACT. TYPE	PESO WEIGHT	P.V.P. € PRICE €
-------------	-------------	---------------------	-------------	------------------

Gen-Air Doble efecto / Gen-Air Double acting				
5508 09 48	2"	GN-15	6,630	-
5508 10 48	2 1/2"	GN-15	7,330	-
5508 11 53	3"	GN-17	6,630	-
5508 12 64	4"	GN-20	11,830	-
5508 13 65	5"	GN-25	15,170	-
5508 14 65	6"	GN-25	14,500	-
5508 16 67	8"	GN-35	25,780	-
5508 18 68	10"	GN-40	37,330	-
5508 20 69	12"	GN-45	56,900	-
Gen-Air Simple efecto / Gen-Air Spring return				
5508 09 51	2"	GN-17/S5	5,800	-
5508 10 85	2 1/2"	GN-25/S5	9,980	-
5508 11 78	3"	GN-30/S4	11,370	-
5508 12 86	4"	GN-30/S5	14,670	-
5508 13 87	5"	GN-35/S4	18,800	-
5508 14 88	6"	GN-35/S5	22,720	-
5508 16 81	8"	GN-45/S4	29,220	-
5508 18 95	10"	GN-50/S4	47,230	-
5508 20 90	12"	GN-55/S6	70,900	-

Ref. 5508



### Válvula mariposa tipo LUG (bridas DIN)

Características de válvula ver art. 2108.

#### Butterfly valve LUG type (DIN flanges)

Valve characteristics see art. 2108.

GNP					
Medida/Size	MOD. ACT	A	E	L	D
2"	GNP-44	357,5	117,5	168	83
2 1/2"	GNP-44	370,5	117,5	168	83
3"	GNP-44	385,5	117,5	168	83
4"	GNP-60	434,5	129,5	184	92
5"	GNP-94	481,5	138,5	204	103
6"	GNP-94	506,5	138,5	204	103
8"	GNP-198	593	163	268	121,5
10"	GNP-300	696	185	296	142
12"	GNP-513	773,5	201,5	390	152

GNP					
Medida/Size	MOD. ACT	A	E	L	D
2"	GNP-44/S4	357,5	117,5	168	83
2 1/2"	GNP-94/S5	391,5	138,5	204	103
3"	GNP-135/S5	415	147	262	108,5
4"	GNP-135/S5	452	147	262	108,5
5"	GNP-198/S5	506	163	268	121,5
6"	GNP-198/S6	531	163	268	121,5
8"	GNP-513/S5	631,5	201,5	390	152
10"	GNP-800/S5	738	227	454	174
12"	GNP-1280/S5	832	260	525	206

GNP Doble efecto / GNP Double acting				
5508 09 128	2"	GNP-44	6,900	-
5508 10 128	2 1/2"	GNP-44	7,600	-
5508 11 128	3"	GNP-44	7,760	-
5508 12 138	4"	GNP-60	11,660	-
5508 13 142	5"	GNP-94	14,470	-
5508 14 142	6"	GNP-94	16,600	-
5508 16 150	8"	GNP-198	24,100	-
5508 18 158	10"	GNP-300	37,300	-
5508 20 162	12"	GNP-513	56,440	-
GNP Simple efecto / GNP Spring return				
5508 09 132	2"	GNP-44/S4	4,400	-
5508 10 144	2 1/2"	GNP-94/S5	9,400	-
5508 11 148	3"	GNP-135/S5	12,800	-
5508 12 148	4"	GNP-135/S5	14,600	-
5508 13 154	5"	GNP-198/S5	16,480	-
5508 14 156	6"	GNP-198/S6	20,400	-
5508 16 164	8"	GNP-513/S5	28,600	-
5508 18 168	10"	GNP-800/S5	47,900	-
5508 20 172	12"	GNP-1280/S5	90,000	-



CÓDIGO CODE	MEDIDA SIZE	TIPO ACT. ACT. TYPE	PESO WEIGHT	P.V.P. € PRICE €
----------------	----------------	------------------------	----------------	---------------------

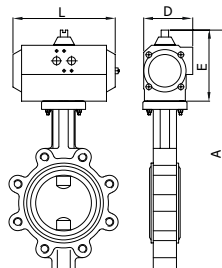
Ref. 5508A

**Válvula mariposa tipo LUG (bridas ANSI)**

Características de válvula ver art. 2108A.

**Butterfly valve LUG type (ANSI flanges)**

Valve characteristics see art. 2108A.



GN					
Medida/Size	MOD. ACT	A	E	L	D
2"	GN-15	351	111	165	81
2 1/2"	GN-15	364	111	165	81
3"	GN-17	379	111	197	81
4"	GN-20	433	128	177	96
5"	GN-25	471	128	239	96
6"	GN-25	496	128	239	96
8"	GN-35	614	184	246	131
10"	GN-40	695	184	290	131
12"	GN-45	770	198	351	145
14"	GN-60	865	287	420	230
16"	GN-60	933	287	420	230
18"	GN-65	990	287	502	230
20"	GN-70	1126	358	611	338

GN					
Medida/Size	MOD. ACT	A	E	L	D
2"	GN-17/S5	351	111	197	81
2 1/2"	GN-25/S5	381	128	239	96
3"	GN-30/S4	415	147	230	114
4"	GN-30/S5	452	147	230	114
5"	GN-35/S4	527	184	246	131
6"	GN-35/S5	552	184	246	131
8"	GN-45/S4	628	198	351	145
10"	GN-50/S4	743	232	361	181
12"	GN-55/S6	804	232	418	181
14"	GN-70/S5	936	358	611	338
16"	GN-70/S6	1004	358	611	338

Gen-Air Doble efecto / Gen-Air Double acting				
5508A 09 48	2"	GN-15	6,630	-
5508A 10 48	2 1/2"	GN-15	7,330	-
5508A 11 53	3"	GN-17	8,010	-
5508A 12 64	4"	GN-20	11,830	-
5508A 13 65	5"	GN-25	15,170	-
5508A 14 65	6"	GN-25	17,300	-
5508A 16 67	8"	GN-35	25,780	-
5508A 18 68	10"	GN-40	37,500	-
5508A 20 69	12"	GN-45	56,900	-
5508A 22 57	14"	GN-60	99,000	-
5508A 24 54	16"	GN-60	127,400	-
5508A 26 58	18"	GN-65	188,500	-
5508A 28 100	20"	GN-70	247,500	-
Gen-Air Simple efecto / Gen-Air Spring return				
5508A 09 51	2"	GN-17/S5	5,960	-
5508A 10 85	2 1/2"	GN-25/S5	9,980	-
5508A 11 78	3"	GN-30/S4	11,370	-
5508A 12 86	4"	GN-30/S5	14,670	-
5508A 13 87	5"	GN-35/S4	18,800	-
5508A 14 88	6"	GN-35/S5	22,720	-
5508A 16 81	8"	GN-45/S4	29,220	-
5508A 18 95	10"	GN-50/S4	47,230	-
5508A 20 90	12"	GN-55/S6	70,900	-
5508A 22 101	14"	GN-70/S5	144,700	-
5508A 24 102	16"	GN-70/S6	173,100	-

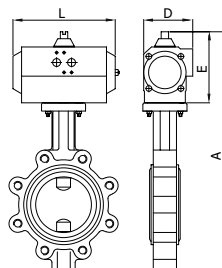
Ref. 5508A

**Válvula mariposa tipo LUG (bridas ANSI)**

Características de válvula ver art. 2108A.

**Butterfly valve LUG type (ANSI flanges)**

Valve characteristics see art. 2108A.



GNP					
Medida/Size	MOD. ACT	A	E	L	D
2"	GNP-44	357,5	117,5	168	83
2 1/2"	GNP-44	370,5	117,5	168	83
3"	GNP-44	385,5	117,5	168	83
4"	GNP-60	434,5	129,5	184	92
5"	GNP-94	481,5	138,5	204	103
6"	GNP-94	506,5	138,5	204	103
8"	GNP-198	593	163	268	121,5
10"	GNP-300	696	185	296	142
12"	GNP-513	773,5	201,5	390	152
14"	GNP-1280	838	260	525	206
16"	GNP-1280	906	260	525	206
18"	GNP-1600	988	285	532	226
20"	GNP-2300	1086	318	610	260

GNP					
Medida/Size	MOD. ACT	A	E	L	D
2"	GNP-44/S4	357,5	117,5	168	83
2 1/2"	GNP-94/S5	391,5	138,5	204	103
3"	GNP-135/S5	415	147	262	108,5
4"	GNP-135/S5	452	147	262	108,5
5"	GNP-198/S5	506	163	268	121,5
6"	GNP-198/S6	531	163	268	121,5
8"	GNP-513/S5	631,5	201,5	390	152
10"	GNP-800/S5	738	227	454	174
12"	GNP-1280/S5	831	260	525	206
14"	GNP-2500/S5	934	356	722	294
16"	GNP-2500/S5	1002	356	722	294

GNP Doble efecto / GNP Double acting				
5508A 09 128	2"	GNP-44	6,900	-
5508A 10 128	2 1/2"	GNP-44	7,760	-
5508A 11 128	3"	GNP-44	7,760	-
5508A 12 138	4"	GNP-60	9,920	-
5508A 13 142	5"	GNP-94	14,470	-
5508A 14 142	6"	GNP-94	15,000	-
5508A 16 150	8"	GNP-198	22,100	-
5508A 18 158	10"	GNP-300	47,900	-
5508A 20 162	12"	GNP-513	56,440	-
5508A 22 170	14"	GNP-1280	101,800	-
5508A 24 170	16"	GNP-1280	130,200	-
5508A 26 174	18"	GNP-1600	189,800	-
5508A 28 176	20"	GNP-2300	239,700	-
GNP Simple efecto / GNP Spring return				
5508A 09 132	2"	GNP-44/S4	5,570	-
5508A 10 144	2 1/2"	GNP-94/S5	9,400	-
5508A 11 148	3"	GNP-135/S5	11,300	-
5508A 12 148	4"	GNP-135/S5	11,660	-
5508A 13 154	5"	GNP-198/S5	16,480	-
5508A 14 156	6"	GNP-198/S6	20,400	-
5508A 16 164	8"	GNP-513/S5	28,600	-
5508A 18 168	10"	GNP-800/S5	47,900	-
5508A 20 172	12"	GNP-1280/S5	90,000	-
5508A 22 180	14"	GNP-2500/S5	177,600	-
5508A 24 180	16"	GNP-2500/S5	206,000	-

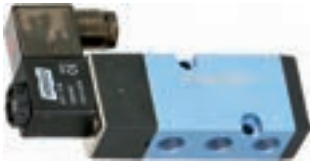
03 AUTOMATIZACIÓN & CONTROL  
AUTOMATION & CONTROL



# LÍNEA INDUSTRIAL / INDUSTRIAL LINE

CÓDIGO CODE	MEDIDA SIZE	PESO WEIGHT	P.V.P. € PRICE €
-------------	-------------	-------------	------------------

Ref. 4519



### Electroválvula 5 vías

Acoplamiento conforme con la norma Namur 5 vías / 2 posiciones. Dispositivo de mando manual. Consumo 5 W. Grado de protección: IP 65 con conector y juntas. Racores: 1/4" gas. Presión de trabajo: min. 2 bar máx. 10 bar. Límite de temperaturas: -20°C +70°C.

#### 5-ways solenoid valve

Coupling according norm Namur functioning 5 ways / 2 positions. Manual control device. Consumption 5 W. Protection: IP 65 with connector and seals. Connectors: 1/4" gas. Working pressure: min. 2 bar max. 10 bar. Temperature limits: -20°C +70°C.

4519 02 A12V	A12V	0,310	-
4519 02 C12V	C12V	0,310	-
4519 02 A24V	A24V	0,310	-
4519 02 C24V	C24V	0,310	-
4519 02 A48V	A48V	0,310	-
4519 02 C48V	C48V	0,001	-
4519 02 110V	110V	0,310	-
4519 02 220V	220V	0,310	-

Ref. 4521



### Electroválvula 5 vías con bobina de seguridad

Intrínseca = ATEX Ex 2G EEx ia IIC T6.

#### 5-ways solenoid valve with intrinsic safety coil

ATEX Ex 2G EEx ia IIC T6.

4521 02	C24V	0,48	-
---------	------	------	---

Ref. 4522



### Electroválvula 5 vías con bobina antideflagrante

ATEX Ex 2G EEx m II T4.

#### 5 ways solenoid valve with protection by encapsulation coil

ATEX Ex 2G EEx m II T4.

4522 02	C24V	0,48	-
4522 02	220V	0,48	-

Ref. 4523



### Electroválvula 5 vías biestable

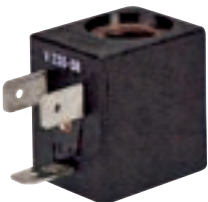
Acoplamiento conforme con la norma Namur.

#### 5 ways solenoid valve dual stable

Coupling according NAMUR std.

4523 02 C24V	C24V	0,408	-
4523 02 220V	220V	0,408	-

Ref. 4819



### Bobina para electroválvulas 5 vías

Potencia 5W. Tolerancia de tensión en corriente alterna (+10% - 15%) y en corriente continua (+10% - 5%). Voltajes disponibles en corriente alterna 24V - 48V - 110V - 220V (50-60 Hz) y en corriente continua 12V - 24V. Clase F. Temperatura máxima 155°C. Grado de protección IP65.

#### 5 Ways solenoid valve coil

5W power. Voltage tolerance in alternating current (10% - 15%) and in direct current (+10% - 5%). Available voltages in alternating current 24V - 48V - 110V - 220V (50-60 Hz) and in direct current 12V - 24V. F class. Maxim Temperature 155°C. IP65 degree protection.

4819 A12V	-	0,054	-
4819 C12V	-	0,054	-
4819 A24V	-	0,054	-
4819 C24V	-	0,054	-
4819 A48V	-	0,054	-
4819 110V	-	0,054	-
4819 220V	-	0,054	-

Ref. 4821



### Bobina para electroválvula 5 vías

Seguridad Intrínseca: AtexEExia IIC T6

#### 5 waysolenoid valve coil

Intrinsic safety: AtexEExia IIC T6

4821 C24V	-	0,100	-
-----------	---	-------	---

	CÓDIGO CODE	MEDIDA SIZE	PESO WEIGHT	P.V.P. € PRICE €
--	-------------	-------------	-------------	------------------

Ref. 4822



**Bobina para electroválvula 5 vías**  
Antideflagrante: AtexEEEx m II T4

**5 way solenoid valve coil**  
Encapsulation coil: AtexEEEx m II T4

4822 C24V	-	0,100	-
4822 220V	-	0,100	-

Ref. 4801



**(4801 05) Conector tripolar 5W**

Conector de 3 polos. Potencia 5W. DIN 43650. Grado de protección IP65. Multitensión, para corriente alterna y continua.

**(4801 05) 3-Pole 5W connector**

3-Pole connector. 5W power. DIN 43650. IP65 degree protection. Multi tension, for AC and DC voltages.

4801 05	-	0,020	-
---------	---	-------	---

Ref. 4800



**Conector tripolar 5 W con cable**  
DIN 43650 IP65.

**3-Pole 5 W connector with wires**  
DIN 43650 IP65.

4800 05	-	0,100	-
---------	---	-------	---

Ref. 5950 - 5951



**Posicionador rotativo - Neumático**  
Señal 3 - 15 PSI

**Rotary positioner - Pneumatic**  
Signal 3 - 15 PSI.

**Posicionador rotativo - Electroneumático**  
Señal 4-20 mA.

**Positioners rotary - Electropneumatic**  
Signal 4-20 mA.

5950 00	-	1,76	-
---------	---	------	---

Actuador no incluido. / Actuator not included.

5951 00	-	2,450	-
---------	---	-------	---

Actuador no incluido / Actuator not included.



**Posicionador rotativo - Electroneumático**  
Señal 4-20 mA con retransmisor de posición

**Positioners rotary - Electropneumatic**  
Signal 4-20 mA with position transmitter

5951 04	-	2,75	-
---------	---	------	---

Actuador no incluido. / Actuator not included.

**NEW**



**Posicionador rotativo - Electroneumático**  
Señal 4-20 mA con final de carrera

**Positioners rotary - Electropneumatic**  
Signal 4-20 mA with limit switch

5951 06	-	3,650	-
---------	---	-------	---

Actuador y final de carrera no incluido / Actuator and limit switch not included.

# LÍNEA INDUSTRIAL / INDUSTRIAL LINE

CÓDIGO CODE	MEDIDA SIZE	PESO WEIGHT	P.V.P. € PRICE €
----------------	----------------	----------------	---------------------

Ref. 5952

### Posicionador lineal - Electroneumático

Señal 4-20 mA.

### Lineal positioner - Electropneumatic

Signal 4-20 mA.

### Posicionador lineal - Neumático

Señal 3-15 PSI

### Lineal positioner - Pneumatic

Signal 3-15 PSI

### Posicionador lineal - Electroneumático

Señal 4 - 20 mA con retransmisor de posición

### Lineal positioner - Electropneumatic

Signal 4 - 20 mA with position transmitter

5952 00 - 2,215 -

Válvula no incluida. / Valve not included.

5952 02 - 1,700 -

Válvula no incluida. / Valve not included.

5952 04 - 2,750 -

Válvula no incluida. / Valve not included.



Ref. 5954

### Posicionador Digital

Para actuador lineal ó rotativo Simple efecto - Señal 4 - 20 mA

### Smart Positioner

For linear or rotary actuator Single Acting -Signal 4 - 20 mA

5954 00 - 2,000 -



Ref. 5953

### Controlador de velocidad para actuadores neumáticos

Montaje directo entre actuador y electroválvula NAMUR 5/2.

### Pneumatic actuator speed controller

Directly mounts between the actuator and NAMUR solenoid valve 5/2.

5953 02 - 0,1 -



Ref. P5953

### Placa adaptadora para controlador de velocidad de actuadores neumáticos

Montaje directo sobre actuador conexión NAMUR.

### Adaptor plate for pneumatic actuator speed controller

Directly mounts on actuator NAMUR connection.

P5953 - 0,1 -



CÓDIGO CODE	MEDIDA SIZE	PESO WEIGHT	P.V.P. € PRICE €
----------------	----------------	----------------	---------------------

Ref. 5971

**Reductor manual de emergencia**  
**Gear box for emergency control**



5971 04	200 Nm	7,000	-
5971 05	600 Nm	15,000	-
5971 06	900 Nm	17,000	-

Válvula y actuador no incluido. / Valve and actuator not included.

Ref. 5975 - 5976 - 5977 -  
5977A - 5977B - 5978 -  
5978A

**Reductores manuales**  
Tipo sin fin corona. Cuerpo de fundición.  
**Gear operators**  
Worm gear type. Cast iron body.



Ref.	Torque	S x S	T	U	K	R
5975	300 Nm	17 x 17	F 07	F 05	M8	M6
5976	750 Nm	22 x 22	F 10	F 07	M10	M8
5977	1200 Nm	22 x 22	F 10	---	M10	---
5977A	1200 Nm	22 x 22	F 12	---	M12	---
5977B	1200 Nm	27 x 27	F 14	---	M16	---
5978	2000 Nm	27 x 27	F14	---	M16	---
5978A	2000 Nm	36 x 36	F 14	---	M16	---

5975	300 Nm	4,8	-
5976	750 Nm	9,794	-
5977	1200 Nm	12,25	-
5977A	1200 Nm	12,250	-
5977B	1200 Nm	12,250	-
5978	2000 Nm	33,800	-
5978A	2000 Nm	33,800	-

Ref. 5984

**Reductores manuales**  
Tipo sin fin corona. Cuerpo de aluminio.  
**Gear operators**  
Worm gear type. Cast aluminium body.



5984 04	150 Nm	1,350	-
5984 05	250 Nm	2,180	-
5984 06	750 Nm	3,300	-

Ref. 5985

**Mando manual con retorno por muelle**  
**Manual device with spring return**



Ref.	Torque	S x S	F
5985 02	11 Nm	11 x 11	F03/F05
5985 07	21 Nm	14 x 14	F03/F05/F07
5985 09	40 Nm	17 x 17	F05/F07

5985 02	11 Nm	1,870	-
5985 07	21 Nm	1,870	-
5985 09	40 Nm	5,170	-

Válvula no incluida / Valve not included



# LÍNEA INDUSTRIAL / INDUSTRIAL LINE

CÓDIGO CODE	MEDIDA SIZE	PESO WEIGHT	P.V.P. € PRICE €
----------------	----------------	----------------	---------------------

Ref. 5987



**Microrruptores final de carrera Electromecánico**

**Limit switch box Electromechanical**

**Microrruptores final de carrera**

2 sensores inductivos ALPS 10-30VCC 2 hilos.  
En caja de aluminio norma NAMUR - IP 67.

**Limit switch box**

2 inductive sensors ALPS 10-30VCC 2 wire. In aluminium "NAMUR" box - IP 67.

**Microrruptores final de carrera**

2 Sensores inductivos ALPS 10-30VDC 3 hilos "PNP".  
En caja de aluminio norma NAMUR - IP 67.

**Limit switch box**

2 inductive sensors ALPS 10-30VDC 3 wire PNP.  
In aluminium "NAMUR" box - IP 67.

**Microrruptores final de carrera**

2 sensores inductivos NCB2-V3-NO "P + F" (ATEX EEX ia II C T6. 8V).  
En caja de aluminio norma NAMUR - IP 67.

**Limit switch box**

2 inductive sensors NCB2-V3-NO "P + F" (ATEX EEX ia II C T6. 8V).  
In aluminium "NAMUR" box - IP 67.

5987 02	-	0,609	-
---------	---	-------	---

Actuador no incluido. / Actuator not included.

5987 04	-	0,630	-
---------	---	-------	---

Actuador no incluido. / Actuator not included.

5987 06	-	0,609	-
---------	---	-------	---

Actuador no incluido. / Actuator not included.

5987 08	-	0,625	-
---------	---	-------	---

Actuador no incluido. / Actuator not included.

Ref. 5987



**Microrruptores final de carrera Electromecánico CROUZET (125-250VAC)**

**Limit switch box Electromechanical CROUZET (125-250VAC)**

**Microrruptores final de carrera**

2 sensores inductivos NCB2-V3-NO "P+F" (ATEX EEX ia II C T6. 8V).  
En caja de aluminio ATEX Ex d II B T6 - NAMUR IP67.

**Limit switch box**

2 inductive sensors NCB2-V3-NO "P+F" (ATEX EEX ia II C T6. 8V).  
In aluminium ATEX Ex d II B T6 - NAMUR IP67.

5987 10	-	1,5	-
---------	---	-----	---

Actuador no incluido. / Actuator not included.

5987 12	-	1,48	-
---------	---	------	---

Actuador no incluido. / Actuator not included.

Ref. 5987 20



**Cabezal de control para Actuadores Neumáticos Rotativos On/Off con sensores, electroválvula y bus de comunicación AS-i**

En caja de aluminio norma NAMUR - IP67- 24VDC.

**Top controller for Pneumatic Actuators On/Off with sensors, solenoid and communication card AS-i**

In aluminium NAMUR box - IP67- 24VDC.

5987 20	-	-	-
---------	---	---	---

Ref. 5315



**Microrruptor final de carrera Electromecánico**

Sobre válvula manual esfera ref. 2015, 2025, 2026, 2027, 2040, 2041, 2540E, 2541E, 2544, 2545  
Ver art. 5987 02.

**Limit switch box Electromechanical**

Installed on a handle ball valve ref. 2015, 2025, 2026, 2027, 2040, 2041, 2540E, 2541E, 2544, 2545  
See art. 5987 02

**Microrruptor final de carrera con sensores Inductivos**

Sobre válvula manual esfera ref. 2015, 2025, 2026, 2027, 2040, 2041, 2540E, 2541E, 2544, 2545  
Ver art. 5987 04

**Limit switch box with Inductive sensors**

Installed on a handle ball valve ref. 2015, 2025, 2026, 2027, 2040, 2041, 2540E, 2541E, 2544, 2545  
See art. 5987 04

**Microrruptor final de carrera con sensores Inductivos (Atex)**

Sobre válvula manual esfera ref. 2015, 2025, 2026, 2027, 2040, 2041, 2540E, 2541E, 2544, 2545  
Ver art. 5987 08

**Limit switch box with Inductive sensors (Atex)**

Installed on as handle ball valve ref. 2015, 2025, 2026, 2027, 2040, 2041, 2540E, 2541E, 2544, 2545  
See art. 5987 08

CÓDIGO CODE	MEDIDA SIZE	PESO WEIGHT	P.V.P. € PRICE €
-------------	-------------	-------------	------------------

5315 02 02	1/4"-1/2"	0,800	-
5315 05 02	3/4"-1"	0,800	-
5315 07 02	1 1/4"-2"	0,810	-
5315 10 02	2 1/2"-4"	0,835	-

Válvula no incluida. / Valve not included.

5315 02 04	1/4" - 1/2"	0,800	-
5315 05 04	3/4" - 1"	0,800	-
5315 07 04	1 1/4" - 2"	0,810	-
5315 10 04	2 1/2" - 4"	0,835	-

Válvula no incluida. / Valve not included.

5315 02 08	1/4"-1/2"	0,800	-
5315 05 08	3/4"-1"	0,800	-
5315 07 08	1 1/4"-2"	0,810	-
5315 10 08	2 1/2"-4"	0,835	-

Válvula no incluida. / Valve not included.

Ref. 5325

NEW



**Microrruptor final de carrera Electromecánico**

Sobre válvula manual esfera ref. 2118-2119-2525  
Ver art. 5987 02

**Limit switch box Electromechanical**

Installed on handle ball valve ref. 2118-2119-2525  
See art. 5987 02

**Microrruptor final de carrera con sensores inductivos**

Sobre válvula manual esfera ref. 2118-2119-2525  
Ver art. 5987 04

**Limit switch box with inductive sensors**

Installed on handle ball valve ref. 2118-2119-2525  
See art. 5987 04

**Microrruptor final de carrera con sensores inductivos (Atex)**

Sobre válvula manual esfera ref. 2118-2119-2525  
Ver art. 5987 08

**Limit switch box with Inductive sensors (Atex)**

Installed on handle ball valve ref. 2118-2119-2525  
See art. 5987 08

5325 04 02	1/2" - 3/4"	0,800	-
5325 06 02	1" - 1 1/4"	0,800	-
5325 08 02	1 1/2" - 2"	0,810	-
5325 10 02	2 1/2" - 4"	0,835	-

Válvula no incluida. / Valve not included.

5325 04 04	1/2" - 3/4"	0,800	-
5325 06 04	1" - 1 1/4"	0,800	-
5325 08 04	1 1/2" - 2"	0,810	-
5325 10 04	2 1/2" - 4"	0,835	-

Válvula no incluida. / Valve not included.

5325 04 08	1/2" - 3/4"	0,800	-
5325 06 08	1" - 1 1/4"	0,800	-
5325 08 08	1 1/2" - 2"	0,810	-
5325 10 08	2 1/2" - 4"	0,835	-

Válvula no incluida. / Valve not included.

Ref. 5328



**Microrruptor final de carrera Electromecánico**

Sobre válvula manual bridada ref. 2526A, 2528, 2528A, 2529  
Ver art. 5987 02.

**Limit switch box Electromechanical**

Installed on flanged handle valve ref. 2526A, 2528, 2528A, 2529  
See art. 5987 02.

**Microrruptor final de carrera con sensores Inductivos**

Sobre válvula manual bridada ref. 2526A, 2528, 2528A, 2529  
Ver art. 5987 04.

**Limit switch box with Inductive sensors**

Installed on flanged handle valve ref. 2526A, 2528, 2528A, 2529  
See art. 5987 04.

**Microrruptor final de carrera con sensores Inductivos (Atex)**

Sobre válvula manual bridada ref. 2526A, 2528, 2528A, 2529  
Ver art. 5987 08.

**Limit switch box with Inductive sensors (Atex)**

Installed on flanged handle valve ref. 2526A, 2528, 2528A, 2529  
See art. 5987 08.

5328 04 02	1/2"-3/4"	0,800	-
5328 06 02	1"	0,800	-
5328 07 02	1 1/4"-2"	0,810	-
5328 10 02	2 1/2"-4"	0,835	-

Válvula no incluida. / Valve not included.

5328 04 04	1/2" - 3/4"	0,800	-
5328 06 04	1"	0,800	-
5328 07 04	1 1/4" - 2"	0,810	-
5328 10 04	2 1/2" - 4"	0,835	-

Válvula no incluida. / Valve not included.

5328 04 08	1/2"-3/4"	0,800	-
5328 06 08	1"	0,800	-
5328 07 08	1 1/4"-2"	0,810	-
5328 10 08	2 1/2"-4"	0,835	-

Válvula no incluida. / Valve not included.

# LÍNEA INDUSTRIAL / INDUSTRIAL LINE

Ref. 5309



**Microrruptor final de carrera Electromecánico**

Sobre válvula manual mariposa ref. 2103, 2109  
Ver art. 5987 02.

**Limit switch box Electromechanical**

Installed on handle butterfly valve ref. 2103, 2109  
See art. 5987 02.

**Microrruptor final de carrera con sensores Inductivos**

Sobre válvula manual mariposa ref. 2103, 2109  
Ver art. 5987 04.

**Limit switch box with Inductive sensors**

Installed on handle butterfly valve ref. 2103, 2109  
See art. 5987 04.

**Microrruptor final de carrera con sensores Inductivos (Atex)**

Sobre válvula manual mariposa ref. 2103, 2109  
Ver art. 5987 08.

**Limit switch box with Inductive sensors (Atex)**

Installed on handle butterfly valve ref. 2103, 2109  
See art. 5987 08.

CÓDIGO CODE	MEDIDA SIZE	PESO WEIGHT	P.V.P. € PRICE €
-------------	-------------	-------------	------------------

5309 09 02	2" - 3"	0,815	-
5309 12 02	4" - 6"	0,815	-
5309 16 02	8"	0,855	-
5309 18 02	10"	0,855	-

Válvula no incluida. / Valve not included.

5309 09 04	2" - 3"	0,815	-
5309 12 04	4" - 6"	0,815	-
5309 16 04	8"	0,815	-
5309 18 04	10"	0,815	-

Válvula no incluida. / Valve not included.

5309 09 08	2" - 3"	0,815	-
5309 12 08	4" - 6"	0,815	-
5309 16 08	8"	0,855	-
5309 18 08	10"	0,735	-

Válvula no incluida. / Valve not included.

Ref. 5981 - 5982 - 5983

**NEW**



**Microrruptor final de carrera Electromecánico**

Sobre reductor manual ref. 5975, 5976, 5977  
Ver art. 5987 02.

**Limit switch box Electromechanical**

Installed on gear operator ref. 5975, 5976, 5977  
See art. 5987 02.

**Microrruptor final de carrera con sensores Inductivos (Atex)**

Sobre reductor manual ref. 5975, 5976, 5977  
Ver art. 5987 08.

**Limit switch box with Inductive sensors (Atex)**

Installed on gear operator ref. 5975, 5976, 5977  
See art. 5987 08.

**Microrruptor final de carrera con sensores Inductivos**

Sobre reductor manual ref. 5975, 5976, 5977  
Ver art. 5987 04.

**Limit switch box with Inductive sensors**

Installed on gear operator ref. 5975, 5976, 5977  
See art. 5987 04.

5981 00	5975**	0,900	-
5981 02	5976**	0,920	-
5981 04	5977**	0,950	-

\*Reductor manual no incluido.

\*\*Referencia del reductor manual. / \*Gear operator not included.

\*\*Gear operator reference.

5982 00	5975**	0,900	-
5982 02	5976**	0,920	-
5982 04	5977**	0,950	-

\*Reductor manual no incluido.

\*\*Referencia del reductor manual. / \*Gear operator not included.

\*\*Gear operator reference.

5983 00	5975**	0,900	-
5983 02	5976**	0,920	-
5983 04	5977**	0,950	-

\*Reductor manual no incluido.

\*\*Referencia del reductor manual. / \*Gear operator not included.

\*\*Gear operator reference.

Ref. 5989

**NEW**



**Microrruptor final de carrera Electromecánico**

Sobre reductor manual ref. 5984  
Ver art. 5987 02

**Limit switch box Electromechanical**

Installed on gear operator ref. 5984  
See art. 5987 02

**Microrruptor final de carrera con sensores Inductivos**

Sobre reductor manual ref. 5984  
Ver art. 5987 04

**Limit switch box with Inductive sensors**

Installed on gear operator re. 5984  
See art. 5987 04

**Microrruptor final de carrera con sensores Inctivos (Atex)**

Sobre reductor manual 5984  
Ver art. 5987 08

**Limit switch box with Inductive sensors (Atex)**

Installed on gear operator ref. 5984  
See art. 5987 08

5989 04 02	5984 04**	0,900	-
5989 05 02	5984 05**	0,900	-
5989 06 02	5984 06**	0,950	-

\*Reductor manual no incluido.

\*\*Referencia del reductor manual. / \*Gear operator not included.

\*\*Gear operator reference.

5989 04 04	5984 04**	0,900	-
5989 05 04	5984 05**	0,900	-
5989 06 04	5984 06**	0,950	-

\*Reductor manual no incluido.

\*\*Referencia del reductor manual. / \*Gear operator not included.

\*\*Gear operator reference.

5989 04 08	5984 04**	0,900	-
5989 05 08	5984 05**	0,900	-
5989 06 08	5984 06**	0,950	-

\*Reductor manual no incluido.

\*\*Referencia del reductor manual. / \*Gear operator not included.

\*\*Gear operator reference.

Ref. 5988



**Microrruptor final de carrera Electromecánico**

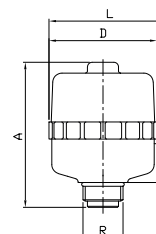
Para válvula de asiento inclinado

**Electromechanical Limit switch box**

For angle seat valve

5988 01	-	0,250	-
---------	---	-------	---

Válvula no incluida / Valve not included





# EXTENSOR PARA VÁLVULA AUTOMATIZADA - ACTUADOR NEUMÁTICO

## EXTENSION FOR AUTOMATED VALVE - PNEUMATIC ACTUATOR



Ref. 5334



### Extensor para válvula automatizada (\*)

(\*) Válvula no incluida (consultar modelo de válvula)

### Extension for automated valve (\*)

(\*) Valve not included (consult the model of the valve)

Válvulas roscar - soldar / Threaded - welded valves		
Ref.	ART.2015 - 2025 - 2026 - 2027	ART.2040 - 2041
5334 09 050	1/4" - 1/2"	1/4" - 1/2"
5334 11 050	3/4" - 1"	3/4" - 1"
5334 14 050	1 1/4" - 2"	1 1/4" - 2"
5334 17 050	2 1/2" - 4"	2 1/2"

Válvulas roscar - soldar / Threaded - welded valves		
Ref.	ART.2015 - 2025 - 2026 - 2027	ART.2040 - 2041
5334 14 100	1 1/4" - 2"	1 1/4" - 2"
5334 17 100	2 1/2" - 4"	2 1/2"

Válvulas bridadas / Flanged valves			
Ref.	ART.2118 - 2119 - 2525	ART.2526A - 2528 - 2528A - 2529	ART.2540E - 2541E - 2544 - 2545
5334 09 050	1/2" - 3/4"	1/2" - 3/4"	*****
5334 11 050	1" - 1 1/4"	1"	1"
5334 14 100	1 1/2" - 2"	1 1/4" - 2"	1 1/4" - 2"
5334 17 100	2 1/2" - 4"	2 1/2" - 4"	2 1/2" - 4"

CÓDIGO CODE	MEDIDA SIZE	TIPO ACT. ACT. TYPE	PESO WEIGHT	P.V.P. € PRICE €
L= 50 mm				
5334 09 050	L=50 mm	-	0,270	-
5334 11 050	L= 50 mm	-	0,380	-
5334 14 050	L=50 mm	-	0,530	-
5334 17 050	L=50 mm	-	0,700	-
L= 100 mm				
5334 14 100	L= 100mm	-	0,840	-
5334 17 100	L= 100mm	-	1,100	-

03 AUTOMATIZACIÓN & CONTROL  
AUTOMATION & CONTROL



## AUTOMATIZACIÓN Y CONTROL

### AUTOMATION & CONTROL

#### VÁLVULAS EQUIPADAS CON ACTUADOR ELÉCTRICO PARA ACCIONAMIENTO AUTOMÁTICO Y A DISTANCIA

##### Características de los actuadores

Específicamente diseñados para aplicaciones de 1/4 de vuelta (90°) y reversibles, ideales para la automatización de válvulas de bola y mariposas. Resistentes a la corrosión. Mando manual de emergencia. Indicador visual de posición. Estos actuadores podemos ofrecerlos en tensión monofásica o trifásica dependiendo del modelo del mismo y además distintas tensiones y tipos de alimentación (AC o DC).

##### Características técnicas de actuador monofásico

#### VALVES EQUIPPED WITH ELECTRIC ACTUATOR FOR AUTOMATIC AND REMOTE OPERATION

##### Characteristics of the actuators

Specifically designed for applications of 1/4 turn (90°) and reversible, ideal for the electric automation of ball valves and butterfly valves. Rust resistant. Emergency manual control. Visual position indicator.

These actuators we can offer in different tension, single phase or three-phase depending of the model actuator and also different range of AC or DC voltage.

##### Technical characteristics of single fase actuators

DESCRIPCIÓN DESCRIPTION	UNID. UNITS	GE-0 (S/B)	GE-05 (S/B)	GE-1 (S/B)	GE-15 (S/B)	GE-2 (S/B)	GE-2+ (S/B)
Tiempo maniobra en vacío (90°) + / - 10 % Operation time no load (90°) + / - 10%	Seg. Sec	10	10	13	29	25	48
Par maniobra en operación / Operating torque	Nm.	20	35	55	85	140	300
Par máximo arranque / Maximum torque break	Nm	25	38	60	90	170	350
Tiempo bajo tensión / Duty rating	%	75					
Protección IEC 60529 / Ip rating IEC 60529	---	IP-67					
Ángulo maniobra / Working angle	° (grados)	90° (Option 180° - 270°)					
Temperatura de trabajo / Working temperature	°C	-20° + 70°					
Interruptor final de carrera / Limit switch	---	4 SPDT micro					
Resistencia calefactora / Anti-condensation heater	W	3,5					
Conectores / Plugs	---	EN 175301 - 803 Form.A / DIN 43650/C					
Peso / Weight	Kg	1,8	1,9	2,4	3	5,2	5,2
Voltaje / Voltage	V	SERIE " S " : 24 a 240 VCA / VCC / 24 to 240 VAC / VDC 50 / 60 Hz SERIE " B " : 12 VCA / VCC / 12 VAC / VDC 50 / 60 Hz					
Consumo a par máximo Consumption at maximum torque	mA / W	Ver Ficha Técnica / See Data Sheet					

#### Todos los modelos están equipados con los siguientes elementos:

- Control térmico de la temperatura.
- Multivoltaje.
- Control electrónico de par.
- Mando manual de Emergencia.
- Control Visual de Operación (LED) modelos.
- Configuración conexión AC / DC.
- Contactos auxiliares.

#### Accesorios opcionales:

- Posicionador 4 / 20 mA.
- Bloque de Seguridad. Este dispositivo permite situar la válvula en posición preferente (N.C. ó N.A.) y garantiza un numero de movimiento por fallo de suministro eléctrico.

#### All models are fitted with the following elements:

- Automatic temperature control.
- Autovoltage sensing.
- Electronic torque limiter.
- Manual override.
- Visual Control of operation (LED) models.
- Protected Electrical Supply AC / DC.
- Volt free contacts.

#### Optional accessories:

- Positioner 4 / 20 mA.
- Safety Lock. This device allows the valve to be placed in a preferential position (N.C. ó N.A.) and guarantee a number of movements in case the electric supply fails.

# AUTOMATIZACIÓN Y CONTROL

## AUTOMATION & CONTROL

### CARACTERÍSTICAS TÉCNICAS DE ACTUADOR TRIFÁSICO

#### TECHNICAL CHARACTERISTICS OF THREE-PHASE ACTUATORS

DESCRIPCIÓN DESCRIPTION	UNID. UNITS	GE - 010	GE - 015	GE - 025	GE - 035	GE - 050	GE - 080	GE - 110	GE - 150	GE - 210
Par máximo arranque Maximum torque break	Nm	100	160	240	350	500	800	1100	1500	2000
Tiempo maniobra en vacío (90º) Operation time no load (90º)	Seg. Sec.	50Hz: 21 60Hz: 18	50Hz: 26 60Hz: 22	50Hz: 26 60Hz: 22	50Hz: 31 60Hz: 26	50Hz: 31 60Hz: 26	50Hz: 39 60Hz: 32	50Hz: 39 60Hz: 32	50Hz: 93 60Hz: 78	50Hz: 117 60Hz: 97
Peso Weight	Kg	7	13	13	18	18	23	23	58	65
Temperatura de trabajo Working temperature	°C	-20º/ +70º								
Interruptor final de carrera Limit switch	---	4 SPDT								
Resistencia calefactora Anti-condensation heater	W	7-10								
Protección IEC 60529 Protection IEC 60529	---	IP- 67								

Todos los modelos están equipados con los siguientes elementos:

- Control térmico de la temperatura
- Control electrónico de par
- Mando manual de Emergencia
- Contactos auxiliares

Accesorios opcionales:

- Posicionador 4 / 20 mA
- Transmisor 4 / 20 mA
- Mando local / Remoto

All models are fitted with the following elements:

- Automatic temperature control
- Electronic torque limiter
- Manual override
- Volt free contacts

Optional accessories:

- Positioner 4 / 20 mA
- Transmitter 4 / 20 mA
- Remote and local position controller

# LÍNEA INDUSTRIAL / INDUSTRIAL LINE

Ref. 5621



### Válvula esfera 2 piezas

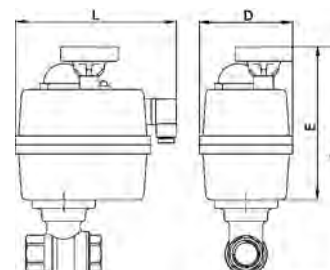
Características de válvula ver art. 2015  
Especificar tensión de alimentación necesaria.

### 2 piezas full bore ball valve

Valve characteristics see art. 2015.  
The required tension supply to be specified.

Medida/Size	A	E	L	D
1/4"	221	169	181	110
3/8"	221	169	181	110
1/2"	221	169	181	110
3/4"	233	169	181	110
1"	239	169	181	110
1 1/4"	254	169	181	110
1 1/2"	266	169	181	110
2"	308	196	181	110

CÓDIGO CODE	MEDIDA SIZE	TIPO ACT. ACT. TYPE	PESO WEIGHT	P.V.P. € PRICE €
5621 02 51	1/4"	GE-0	1,850	-
5621 03 51	3/8"	GE-0	1,840	-
5621 04 51	1/2"	GE-0	1,860	-
5621 05 51	3/4"	GE-0	2,150	-
5621 06 51	1"	GE-0	2,430	-
5621 07 51	1 1/4"	GE-0	3,150	-
5621 08 47	1 1/2"	GE-05	3,150	-
5621 09 52	2"	GE-1	5,240	-



Ref. 5635 - 5636 - 5637  
Rosca Gas - BW - SW



### Válvula esfera 3 piezas

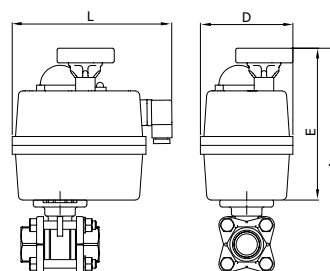
Características de válvula ver art. 2025 / 2026 / 2027.  
Especificar tensión de alimentación necesaria.

### 3 piezas full bore ball valve

Valve characteristics see art. 2025 / 2026 / 2027.  
The required tension supply to be specified.

Medida/Size	A	E	L	D
1/4"	228	169	181	110
3/8"	228	169	181	110
1/2"	228	169	181	110
3/4"	237	169	181	110
1"	242	169	181	110
1 1/4"	259	169	181	110
1 1/2"	269	169	181	110
2"	308	196	181	110
2 1/2"	368	196	181	110
3"	389	196	181	110
4"	477	254	235	214

5635 - 5636 - 5637				
XXXX 02 51	1/4"	GE-0	1,850	-
XXXX 03 51	3/8"	GE-0	1,850	-
XXXX 04 51	1/2"	GE-0	2,060	-
XXXX 05 51	3/4"	GE-0	2,250	-
XXXX 06 51	1"	GE-0	2,600	-
XXXX 07 51	1 1/4"	GE-0	3,250	-
XXXX 08 47	1 1/2"	GE-05	4,050	-
XXXX 09 52	2"	GE-1	5,450	-
XXXX 10 52	2 1/2"	GE-1	9,800	-
XXXX 11 48	3"	GE-15	12,800	-
XXXX 12 53	4"	GE-2	25,700	-



Ref. 5649



### Válvula esfera 2 piezas

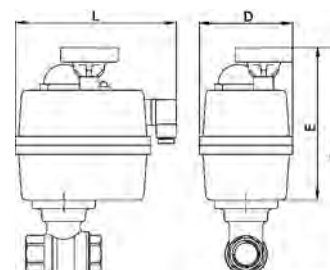
Características de válvula ver art. 3023 hasta 2". Ver art. 3029 de 2 1/2" a 4". Especificar tensión de alimentación necesaria.

### 2 piezas full bore ball valve

Valve characteristics see art. 3023 until 2". See art. 3029 from 2 1/2" to 4". The required tension supply to be specified.

Medida/Size	A	E	L	D
1 1/4"	239	169	181	110
1 1/2"	249	169	181	110
2"	269	169	181	110
2 1/2"	405	254	235	214
3"	431	254	235	214
4"	472	254	235	214

5649 07 51	1 1/4"	GE-0	2,470	-
5649 08 51	1 1/2"	GE-0	2,770	-
5649 09 47	2"	GE-05	4,000	-
5649 10 53	2 1/2"	GE-2	8,850	-
5649 11 53	3"	GE-2	10,300	-
5649 12 54	4"	GE-2+	13,350	-



03 AUTOMATIZACIÓN & CONTROL  
AUTOMATION & CONTROL

CÓDIGO CODE	MEDIDA SIZE	TIPO ACT. ACT. TYPE	PESO WEIGHT	P.V.P. € PRICE €
-------------	-------------	---------------------	-------------	------------------

Ref. 5623

**NEW**

**Válvula esfera 2 piezas**

Características de válvula ver art. 3023. Especificar tensión de alimentación necesaria. Solamente giro 0º - 90º (On - Off).

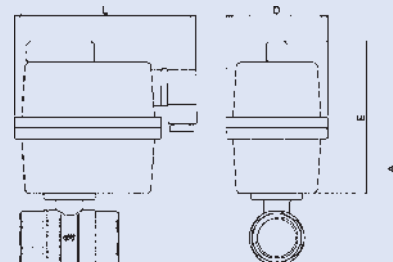
**2 pieces full bore ball valve**

Valve characteristics see art. 3023. The required tension supply to be specified. Only 0º - 90º (On - Off)



Medida/Size	A	E	L	D
1/2"	168	127	170	104
3/4"	177	127	170	104
1"	184	127	170	104

5623 04 45	1/2"	GE-01	1,007	-
5623 05 45	3/4"	GE-01	1,076	-
5623 06 45	1"	GE-01	1,307	-



Ref. 5672E - 5682E

**NEW**

**Válvula esfera 3 vías "L" o "T"**

Características de válvula ver art. 3272E / 3282E. Especificar tensión de alimentación necesaria. Solamente giro 0º - 90º (On - Off)

**"L" or "T" 3 ways ball valve**

Valve characteristics see art. 3272E / 3282E. The required tension supply to be specified. Only 0º - 90º (On - Off)

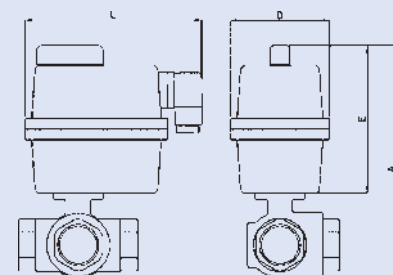


Medida/Size	A	E	L	D
1/2"	178	127	170	104
3/4"	187	127	170	104
1"	197	127	170	104



L				
5672E 04 45	1/2"	GE-01	1,185	-
5672E 05 45	3/4"	GE-01	1,424	-
5672E 06 45	1"	GE-01	1,747	-

T				
5682E 04 45	1/2"	GE-01	1,182	-
5682E 05 45	3/4"	GE-01	1,417	-
5682E 06 45	1"	GE-01	1,735	-



03 AUTOMATIZACIÓN & CONTROL  
AUTOMATION & CONTROL



# LÍNEA INDUSTRIAL / INDUSTRIAL LINE

Ref. 5640 - 5641



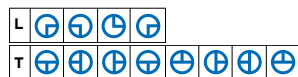
### Válvula esfera 3 vías "L" o "T"

Características de válvula ver art. 2040/2041.  
Especificar tensión de alimentación necesaria.

### "L" or "T" 3 ways reduced bore ball valve

Valve characteristics see art. 2040/2041.  
The required tension supply to be specified.

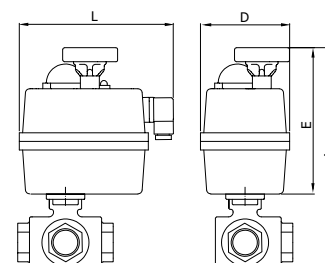
Medida/Size	A	E	L	D
1/4"	201	146	150	96
3/8"	224	169	181	110
1/2"	224	169	181	110
3/4"	231	169	181	110
1"	241	169	181	110
1 1/4"	261	169	181	110
1 1/2"	269	169	181	110
2"	316	196	181	110
2 1/2"	346	196	181	110



CÓDIGO CODE	MEDIDA SIZE	TIPO ACT. ACT. TYPE	PESO WEIGHT	P.V.P. € PRICE €
-------------	-------------	---------------------	-------------	------------------

L				
5640 02 51	1/4"	GE-0	2,500	-
5640 03 51	3/8"	GE-0	2,500	-
5640 04 51	1/2"	GE-0	2,500	-
5640 05 51	3/4"	GE-0	2,800	-
5640 06 51	1"	GE-0	3,300	-
5640 07 51	1 1/4"	GE-0	4,500	-
5640 08 47	1 1/2"	GE-05	4,500	-
5640 09 52	2"	GE-1	7,300	-
5640 10 48	2 1/2"	GE-15	10,950	-

T				
5641 02 51	1/4"	GE-0	2,500	-
5641 03 51	3/8"	GE-0	2,500	-
5641 04 51	1/2"	GE-0	2,500	-
5641 05 51	3/4"	GE-0	2,800	-
5641 06 51	1"	GE-0	3,300	-
5641 07 51	1 1/4"	GE-0	4,500	-
5641 08 47	1 1/2"	GE-05	4,500	-
5641 09 52	2"	GE-1	7,300	-
5641 10 48	2 1/2"	GE-15	10,800	-



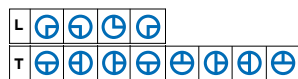
Ref. 5642E - 5643E



### Válvula esfera 3 vías bridada "L" o "T"

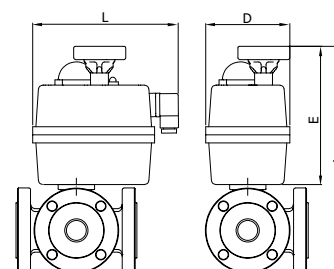
Características de válvula ver art. 2540E / 2541E.

Medida/Size	A	E	L	D
1"	229,5	171	177	110
1 1/4"	242	171	177	110
1 1/2"	273,5	196	177	110
2"	281	196	177	110
2 1/2"	306	196	177	128
3"	376,5	254	235	214
4"	399,5	254	235	214



L				
5642E 06 51	1"	GE-0	8,060	-
5642E 07 47	1 1/4"	GE-05	12,020	-
5642E 08 52	1 1/2"	GE-1	15,760	-
5642E 09 52	2"	GE-1	20,200	-
5642E 10 48	2 1/2"	GE-15	24,700	-
5642E 11 53	3"	GE-2	37,300	-
5642E 12 54	4"	GE-2+	51,140	-

T				
5643E 06 51	1"	GE-0	8,040	-
5643E 07 47	1 1/4"	GE-05	11,940	-
5643E 08 52	1 1/2"	GE-1	15,580	-
5643E 09 52	2"	GE-1	20,020	-
5643E 10 48	2 1/2"	GE-15	24,000	-
5643E 11 53	3"	GE-2	36,500	-
5643E 12 54	4"	GE-2+	48,440	-



Ref. 5644 - 5645

**NEW**

**Válvula esfera 3 vías bridada "L"**

Características de válvula ver art. 2544/2545.

**"L" 3 ways ball valve with flanges**  
Valve characteristics see art. 2544/2545.



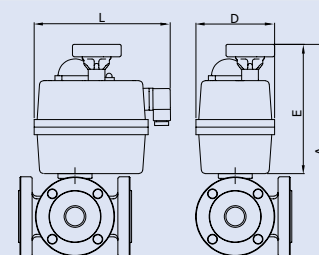
Medida/Size	A	E	L	D
1"	230	171	177	110
1 1/4"	242	171	177	110
1 1/2"	274	196	177	110
2"	281	196	177	110
2 1/2"	306	196	177	128
3"	377	254	235	214
4"	400	254	235	214



CÓDIGO CODE	MEDIDA SIZE	TIPO ACT. ACT. TYPE	PESO WEIGHT	P.V.P. € PRICE €
-------------	-------------	---------------------	-------------	------------------

L				
5644 06 51	1"	GE-0	8,060	-
5644 07 47	1 1/4"	GE-05	12,020	-
5644 08 52	1 1/2"	GE-1	15,760	-
5644 09 52	2"	GE-1	20,200	-
5644 10 48	2 1/2"	GE-15	24,700	-
5644 11 53	3"	GE-2	37,300	-
5644 12 54	4"	GE-2+	51,140	-

T				
5645 06 51	1"	GE-0	8,040	-
5645 07 47	1 1/4"	GE-05	11,940	-
5645 08 52	1 1/2"	GE-1	15,580	-
5645 09 52	2"	GE-1	20,020	-
5645 10 48	2 1/2"	GE-15	24,000	-
5645 11 53	3"	GE-2	36,500	-
5645 12 54	4"	GE-2+	48,440	-



Ref. 5625

**Válvula esfera 2 piezas bridada**

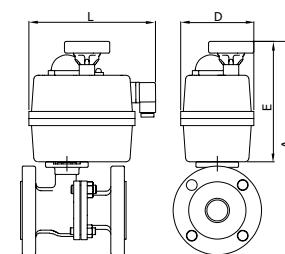
Características de válvula ver art. 2525.  
Especificar tensión de alimentación necesaria.

**2 pieces full bore ball valve - flanges ends**  
Valve characteristics see art. 2525.  
Required voltage must be specified.



Medida/Size	A	E	L	D
1/2"	204	169	181	110
3/4"	274	196	181	110
1"	284	169	181	110
1 1/4"	247	146	150	96
1 1/2"	270	164	155	99
2"	362	196	181	110
2 1/2"	303	164	155	99
3"	426	196	181	110
4"	509	196	181	110

5625 04 51	1/2"	GE-0	4,150	-
5625 05 51	3/4"	GE-0	4,800	-
5625 06 51	1"	GE-0	5,500	-
5625 07 47	1 1/4"	GE-05	8,600	-
5625 08 52	1 1/2"	GE-1	10,650	-
5625 09 52	2"	GE-1	14,500	-
5625 10 48	2 1/2"	GE-15	18,300	-
5625 11 53	3"	GE-2	25,450	-
5625 12 54	4"	GE-2+	29,000	-



Ref. 5625

**Válvula esfera 2 piezas bridada**

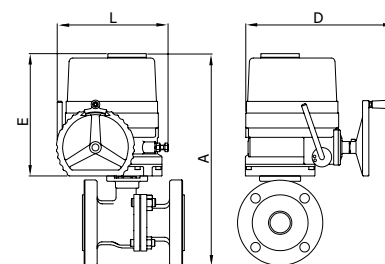
Características de válvula ver art. 2525.  
Servomotor trifásico (3-400 V). Otro voltaje consultar.

**2 pieces full bore ball valve - flanges ends**  
Valve characteristics see art. 2525.  
Triphasic servomotor (3-400 V). Other voltage please consult us.



Medida/Size	A	E	L	D
4"	505	259	229	338
5"	579	259	229	338
6"	648	288	244	357
8"	733	313	284	380

5625 12 55	4"	GE-025	40,000	-
5625 13 55	5"	GE-025	49,320	-
5625 14 56	6"	GE-035	78,800	-
5625 16 57	8"	GE-080	140,000	-



03 AUTOMATIZACIÓN & CONTROL  
AUTOMATION & CONTROL

# LÍNEA INDUSTRIAL / INDUSTRIAL LINE

Ref. 5626A



### Válvula esfera 2 piezas bridada

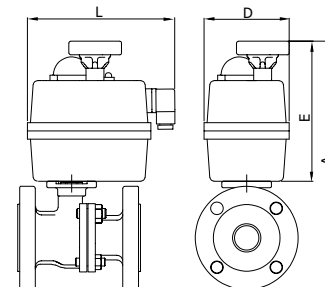
Características de válvula ver art. 2526A.  
Especificar tensión de alimentación necesaria.

### 2 pieces full bore ball valve - flanges ends

Valve characteristics see art. 2526A.  
Required voltage must be specified.

Medida/Size	A	E	L	D
1/2"	204	169	181	110
3/4"	274	169	181	110
1"	284	169	181	110
1 1/4"	311	169	181	110
1 1/2"	252	146	150	96
2"	362	196	181	110
2 1/2"	407	196	181	110
3"	311	164	155	99
4"	509	196	181	110

CÓDIGO CODE	MEDIDA SIZE	TIPO ACT. ACT. TYPE	PESO WEIGHT	P.V.P. € PRICE €
5626A 04 51	1/2"	GE-0	3,450	-
5626A 05 51	3/4"	GE-0	4,000	-
5626A 06 51	1"	GE-0	5,800	-
5626A 07 51	1 1/4"	GE-0	6,650	-
5626A 08 47	1 1/2"	GE-05	9,250	-
5626A 09 52	2"	GE-1	13,400	-
5626A 10 52	2 1/2"	GE-1	16,750	-
5626A 11 48	3"	GE-15	21,200	-
5626A 12 53	4"	GE-2	33,250	-



Ref. 5626A



### Válvula esfera 2 piezas bridada

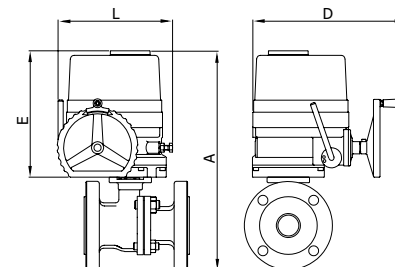
Características de válvula ver art. 2526A.  
Servomotor trifásico (3-400 V). Otro voltaje consultar.

### 2 pieces full bore ball valve - flanges ends

Valve characteristics see art. 2526A.  
Triphasic servomotor (3-400 V). Other voltage please consult us.

Medida/Size	A	E	L	D
4"	514	259	229	338
6"	608	288	244	357

5626A 12 55	4"	GE-025	44,500	-
5626A 14 56	6"	GE-035	74,500	-



Ref. 5628



### Válvula esfera 2 piezas bridada

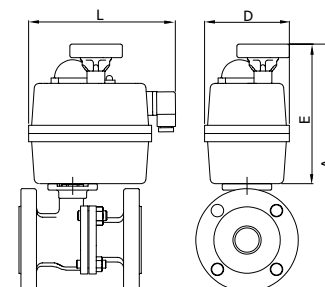
Características de válvula ver art. 2528.  
Especificar tensión de alimentación necesaria.

### 2 pieces full bore ball valve - flanges ends

Valve characteristics see art. 2528.  
Required voltage must be specified.

Medida/Size	A	E	L	D
1/2"	204	169	181	110
3/4"	274	169	181	110
1"	284	169	181	110
1 1/4"	311	169	181	110
1 1/2"	252	146	150	96
2"	362	196	181	110
2 1/2"	407	196	181	110
3"	311	164	155	99
4"	509	196	181	110

5628 04 51	1/2"	GE-0	4,200	-
5628 05 51	3/4"	GE-0	4,950	-
5628 06 51	1"	GE-0	6,700	-
5628 07 51	1 1/4"	GE-0	8,360	-
5628 08 47	1 1/2"	GE-05	10,450	-
5628 09 52	2"	GE-1	14,500	-
5628 10 52	2 1/2"	GE-1	18,100	-
5628 11 48	3"	GE-15	21,200	-
5628 12 53	4"	GE-2	29,000	-



Ref. 5628



**Válvula esfera 2 piezas bridada**

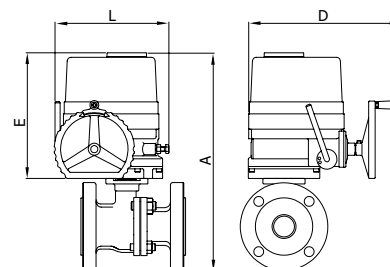
Características de válvula ver art. 2528.  
Servomotor trifásico (3-400 V). Otro voltaje consultar.

**2 pieces full bore ball valve - flanges ends**

Valve characteristics see art. 2528.  
Triphasic servomotor (3-400 V). Other voltage please consult us.

Medida/Size	A	E	L	D
4"	514	259	229	338
5"	579	259	229	338
6"	648	288	244	357
8"	733	313	284	380

CÓDIGO CODE	MEDIDA SIZE	TIPO ACT. ACT. TYPE	PESO WEIGHT	P.V.P. € PRICE €
5628 12 55	4"	GE-025	40,000	-
5628 13 55	5"	GE-025	65,000	-
5628 14 56	6"	GE-035	78,800	-
5628 16 57	8"	GE-080	140,000	-



Ref. 5628A



**Válvula esfera 2 piezas bridada**

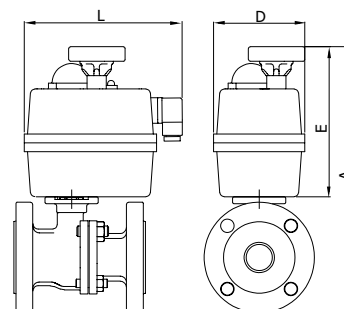
Características de válvula ver art. 2528A.  
Especificar tensión de alimentación necesaria.

**2 pieces full bore ball valve - flanges ends**

Valve characteristics see art. 2528A.  
Required voltage must be specified.

Medida/Size	A	E	L	D
1/2"	204	169	181	110
3/4"	274	169	181	110
1"	284	169	181	110
1 1/4"	311	169	181	110
1 1/2"	252	146	150	96
2"	362	196	181	110
2 1/2"	407	196	181	110
3"	311	164	155	99
4"	509	196	181	110

5628A 04 51	1/2"	GE-0	3,450	-
5628A 05 51	3/4"	GE-0	4,000	-
5628A 06 51	1"	GE-0	5,800	-
5628A 07 51	1 1/4"	GE-0	6,650	-
5628A 08 47	1 1/2"	GE-05	9,250	-
5628A 09 52	2"	GE-1	10,200	-
5628A 10 52	2 1/2"	GE-1	16,750	-
5628A 11 48	3"	GE-15	21,200	-
5628A 12 53	4"	GE-2	33,250	-



Ref. 5628A



**Válvula esfera 2 piezas bridada**

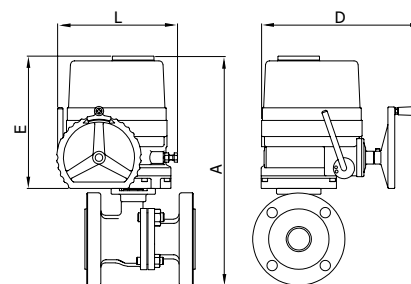
Características de válvula ver art. 2528A.  
Servomotor trifásico (3-400 V). Otro voltaje consultar.

**2 pieces full bore ball valve - flanges ends**

Valve characteristics see art. 2528A.  
Triphasic servomotor (3-400 V). Other voltage please consult us.

Medida/Size	A	E	L	D
4"	509	259	229	338
6"	595	288	244	357
8"	676	313	284	380

5628A 12 55	4"	GE-025	44,250	-
5628A 14 56	6"	GE-035	85,950	-
5628A 16 57	8"	GE-080	141,300	-





# LÍNEA INDUSTRIAL / INDUSTRIAL LINE

Ref. 5629



### Válvula esfera 2 piezas bridada

Características de válvula ver art. 2529.  
Especificar tensión de alimentación necesaria.

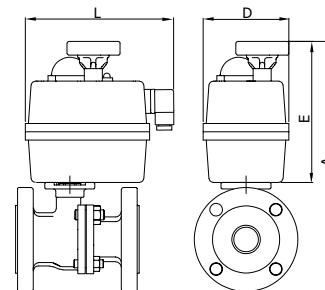
#### 2 pieces full bore ball valve - flanges ends

Valve characteristics see art. 2529.  
Required voltage must be specified.

Medida/Size	A	E	L	D
1/2"	204	169	181	110
3/4"	274	169	181	110
1"	284	169	181	110
1 1/4"	311	169	181	110
1 1/2"	252	146	150	96
2"	362	196	181	110
2 1/2"	407	196	181	110
3"	311	164	155	99
4"	509	196	181	110

CÓDIGO CODE	MEDIDA SIZE	TIPO ACT. ACT. TYPE	PESO WEIGHT	P.V.P. € PRICE €
-------------	-------------	---------------------	-------------	------------------

5629 10 52	2 1/2"	GE-1	19,800	-
5629 11 48	3"	GE-15	25,860	-
5629 12 53	4"	GE-2	36,450	-



Ref. 5629



### Válvula esfera 2 piezas bridada

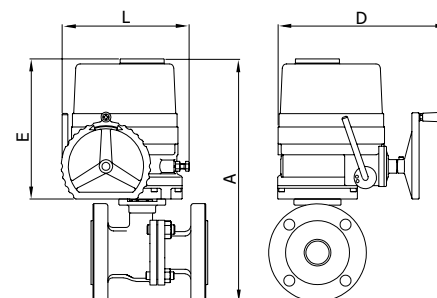
Características de válvula ver art. 2529.  
Servomotor trifásico (3-400 V). Otro voltaje consultar.

#### 2 pieces full bore ball valve - flanges ends

Valve characteristics see art. 2529.  
Triphasic servomotor (3-400 V). Other voltage please consult us.

Medida/Size	A	E	L	D
4"	534	259	229	338
5"	608	288	244	357
6"	663	313	284	380

5629 12 55	4"	GE-025	47,250	-
5629 13 56	5"	GE-035	81,450	-
5629 14 57	6"	GE-080	107,060	-



Ref. 5605



### Válvula esfera 1 pieza tipo wafer

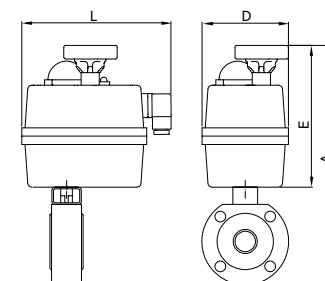
Características de válvula ver art. 2105.  
Especificar tensión de alimentación necesaria.

#### 1 piece wafer type ball valve - flanges ends

Valve characteristics see art. 2105.  
Required voltage must be specified.

Medida/Size	A	E	L	D
1"	272	146	150	96
1 1/4"	307	164	164	99
1 1/2"	321	164	164	99
2"	336	164	164	99
2 1/2"	446	247	200	200
3"	473	247	200	200
4"	507	247	200	200

5605 06 51	1"	GE-0	4,200	-
5605 07 52	1 1/4"	GE-1	5,600	-
5605 08 52	1 1/2"	GE-1	8,300	-
5605 09 52	2"	GE-1	9,800	-
5605 10 53	2 1/2"	GE-2	20,200	-
5605 11 53	3"	GE-2	25,100	-
5605 12 54	4"	GE-2+	35,000	-



Ref. 5615



**Válvula esfera 1 pieza tipo wafer con cámara de calefacción**

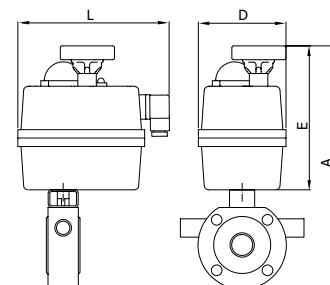
Características de válvula ver art. 2115.  
Especificar tensión de alimentación necesaria.

**1 piece wafer type ball valve - flanges ends**

Valve characteristics see art. 2115.  
Required voltage must be specified.

Medida/Size	A	E	L	D
1"	272	146	150	96
1 1/4"	307	164	164	99
1 1/2"	321	164	164	99
2"	336	164	164	99
2 1/2"	446	247	200	200
3"	473	247	200	200
4"	507	247	200	200

CÓDIGO CODE	MEDIDA SIZE	TIPO ACT. ACT. TYPE	PESO WEIGHT	P.V.P. € PRICE €
5615 06 51	1"	GE-0	4,650	-
5615 07 52	1 1/4"	GE-1	6,150	-
5615 08 52	1 1/2"	GE-1	8,900	-
5615 09 52	2"	GE-1	10,500	-
5615 10 53	2 1/2"	GE-2	21,150	-
5615 11 53	3"	GE-2	26,500	-
5615 12 54	4"	GE-2+	37,050	-



Ref. 5618



**Válvula esfera 1 pieza tipo wafer**

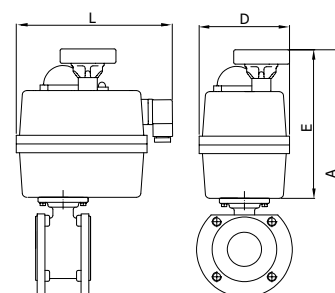
Características de válvula ver art. 2118.  
Especificar tensión de alimentación necesaria.

**1 piece ball valve wafer type**

Valve characteristics see art. 2118.  
Required voltage must be specified.

Medida/Size	A	E	L	D
1/2"	272	169	181	110
3/4"	282	169	181	110
1"	286	169	181	110
1 1/4"	309	169	181	110
1 1/2"	320	169	181	110
2"	362	196	181	110
2 1/2"	382	196	181	110
3"	406	196	181	110
4"	486	196	181	110

5618 04 51	1/2"	GE-0	3,000	-
5618 05 51	3/4"	GE-0	3,500	-
5618 06 51	1"	GE-0	4,000	-
5618 07 51	1 1/4"	GE-0	5,000	-
5618 08 47	1 1/2"	GE-05	6,150	-
5618 09 52	2"	GE-1	7,450	-
5618 10 52	2 1/2"	GE-1	9,800	-
5618 11 48	3"	GE-15	12,300	-
5618 12 53	4"	GE-2	23,200	-



Ref. 5919



**Valvula esfera 1 pieza tipo wafer con cámara de calefacción**

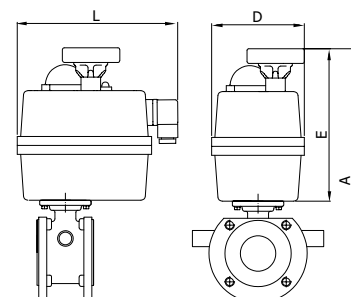
Características de válvula ver art. 2119.  
Especificar tensión de alimentación necesaria.

**1 piece ball valve with heating chamber**

Valve characteristics see art. 2119.  
Required voltage must be specified.

Medida/Size	A	E	L	D
1/2"	272	169	181	110
3/4"	282	169	181	110
1"	286	169	181	110
1 1/4"	309	169	181	110
1 1/2"	382	196	181	110
2"	362	196	181	110
2 1/2"	382	196	181	110
3"	406	196	181	110
4"	486	196	181	110

5919 04 51	1/2"	GE-0	3,100	-
5919 05 51	3/4"	GE-0	3,610	-
5919 06 51	1"	GE-0	4,150	-
5919 07 51	1 1/4"	GE-0	5,250	-
5919 08 47	1 1/2"	GE-05	6,500	-
5919 09 52	2"	GE-1	7,900	-
5919 10 52	2 1/2"	GE-1	10,550	-
5919 11 48	3"	GE-15	13,300	-
5919 12 53	4"	GE-2	24,500	-



# LÍNEA INDUSTRIAL / INDUSTRIAL LINE

Ref. 5633



### Válvula mariposa tipo wafer

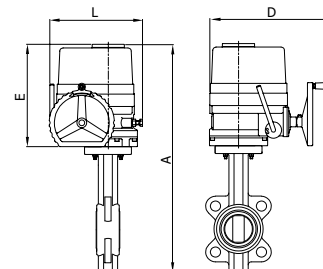
Características de válvula ver art. 2103.  
Servomotor trifásico (3-400 V). Otro voltaje consultar.

### Wafer type butterfly valve

Valve characteristics see art. 2103.  
Triphasic servomotor (3-400 V). Other voltage please consult us.

Medida/Size	A	E	L	D
5"	595	220	172	258
6"	659	259	229	338
8"	709	259	229	338
10"	818	288	244	357
12"	898	288	244	357
14"	963	313	287	380
16"	1033	313	287	380
18"	1281	506	293	368
20"	1381	531	312	380

CÓDIGO CODE	MEDIDA SIZE	TIPO ACT. ACT. TYPE	PESO WEIGHT	P.V.P. € PRICE €
5633 13 58	5"	GE-010	15,750	-
5633 14 59	6"	GE-015	26,150	-
5633 16 55	8"	GE-025	31,900	-
5633 18 56	10"	GE-035	39,500	-
5633 20 62	12"	GE-050	43,700	-
5633 22 57	14"	GE-080	86,000	-
5633 24 60	16"	GE-110	107,000	-
5633 26 64	18"	GE-150	183,500	-
5633 28 61	20"	GE-210	226,500	-



Ref. 5633



### Válvula mariposa tipo wafer

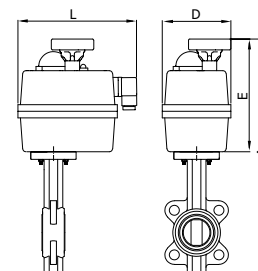
Características de válvula ver art. 2103.  
Especificar tensión de alimentación necesaria.

### Wafer type butterfly valve

Valve characteristics see art. 2103.  
Required voltage must be specified.

DN	A	E	L	D
50	435	196	177	110
65	449	196	177	110
80	464	196	177	110
100	501	196	177	110
125	538	196	177	110
150	614	254	215	214
200	684	254	215	214

5633 09 52	2"	GE-1	6,300	-
5633 10 52	2 1/2"	GE-1	5,600	-
5633 11 52	3"	GE-1	6,200	-
5633 12 48	4"	GE-15	9,700	-
5633 13 48	5"	GE-15	9,400	-
5633 14 53	6"	GE-2	15,300	-
5633 16 54	8"	GE-2+	21,100	-



Ref. 5639



### Válvula mariposa tipo wafer

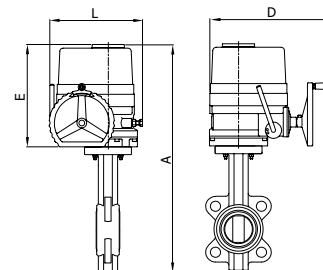
Características de válvula ver art. 2109.  
Servomotor trifásico (3-400 V). Otro voltaje consultar.

### Wafer type butterfly valve

Valve characteristics see art. 2109.  
Triphasic servomotor (3-400 V). Other voltage please consult us.

Medida/Size	A	E	L	D
5"	595	220	172	258
6"	659	259	229	338
8"	709	259	229	338
10"	818	288	244	357
12"	898	288	244	357
14"	963	313	287	380
16"	1033	313	287	380
18"	1281	506	293	368
20"	1381	531	312	380

5639 13 58	5"	GE-010	15,750	-
5639 14 59	6"	GE-015	26,150	-
5639 16 55	8"	GE-025	31,900	-
5639 18 56	10"	GE-035	39,500	-
5639 20 62	12"	GE-050	46,150	-
5639 22 57	14"	GE-080	86,000	-
5639 24 60	16"	GE-110	107,000	-
5639 26 64	18"	GE-150	183,500	-
5639 28 61	20"	GE-210	226,500	-



03 AUTOMATIZACIÓN & CONTROL  
AUTOMATION & CONTROL

Ref. 5639



**Válvula mariposa tipo wafer**

Características de válvula ver art. 2109.  
Especificar tensión de alimentación necesaria.

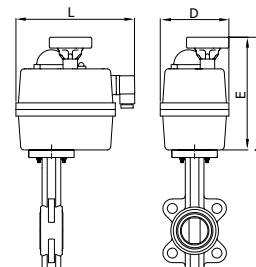
**Wafer type butterfly valve**

Valve characteristics see art. 2109.  
Required voltage must be specified.

DN	A	E	L	D
50	435	196	177	110
65	449	196	177	110
80	464	196	177	110
100	501	196	177	110
125	538	196	177	110
150	614	254	215	214
200	684	254	215	214

CÓDIGO CODE	MEDIDA SIZE	TIPO ACT. ACT. TYPE	PESO WEIGHT	P.V.P. € PRICE €
5639 09 52	2"	GE-1	6,300	-
5639 10 52	2 1/2"	GE-1	6,700	-
5639 11 52	3"	GE-1	5,650	-
5639 12 48	4"	GE-15	8,500	-
5639 13 48	5"	GE-15	11,200	-
5639 14 53	6"	GE-2	12,250	-
5639 16 54	8"	GE-2+	21,100	-

Válvula con elastómero NBR (5639B), Precios a consultar. /  
NBR elastomer valve (5639B), Prices on request.



Ref. 5611



**Válvula mariposa tipo wafer**

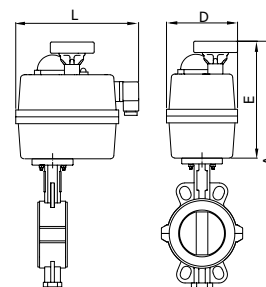
Características de válvula ver art. 2101.  
Especificar tensión de alimentación necesaria.

**Butterfly valve wafer type**

Valve characteristics see art. 2101.  
The required tension supply to be specified.

Medida/Size	A	E	L	D
2"	389	169	181	110
2 1/2"	435	196	181	110
3"	449	196	181	110
4"	486	196	181	110
5"	571	254	235	214
6"	603	254	235	214

5611 09 47	2"	GE-05	5,820	-
5611 10 52	2 1/2"	GE-1	6,080	-
5611 11 52	3"	GE-1	6,640	-
5611 12 48	4"	GE-15	11,830	-
5611 13 53	5"	GE-2	12,870	-
5611 14 54	6"	GE-2+	12,540	-



Ref. 5611



**Válvula mariposa tipo wafer**

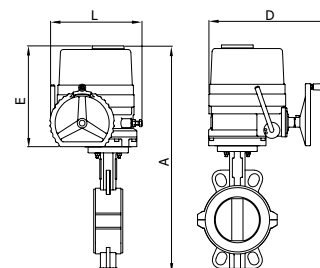
Características de válvula ver art. 2101.  
Servomotor trifásico (3-400 V). Otro voltaje consultar.

**Butterfly valve wafer type**

Valve characteristics see art. 2101.  
Triphasic servomotor (3-400 V). Other voltage please consult us.

Medida/Size	A	E	L	D
4"	510	220	172	258
5"	576	259	229	338
6"	608	259	229	338
8"	699	288	244	357

5611 12 58	4"	GE-010	13,630	-
5611 13 59	5"	GE-015	22,670	-
5611 14 55	6"	GE-025	22,340	-
5611 16 62	8"	GE-050	33,980	-





# LÍNEA INDUSTRIAL / INDUSTRIAL LINE

Ref. 5634



### Válvula mariposa tipo wafer inoxidable

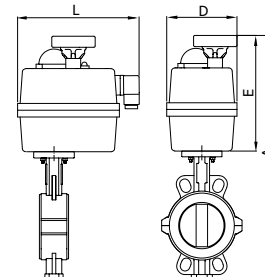
Características de válvula ver art. 2104.  
Especificar tensión de alimentación necesaria.

### Stainless steel butterfly valve wafer type

Valve characteristics see art. 2104.  
Required voltage must be specified.

Medida/Size	A	E	L	D
2"	379	169	181	110
2 1/2"	416	196	181	110
3"	424	196	181	110
4"	470	196	181	110
5"	557	254	235	214
6"	601	254	235	214

CÓDIGO CODE	MEDIDA SIZE	TIPO ACT. ACT. TYPE	PESO WEIGHT	P.V.P. € PRICE €
5634 09 47	2"	GE-05	5,400	-
5634 10 52	2 1/2"	GE-1	6,200	-
5634 11 52	3"	GE-1	6,700	-
5634 12 48	4"	GE-15	8,500	-
5634 13 53	5"	GE-2	13,400	-
5634 14 54	6"	GE-2+	14,800	-



Ref. 5634



### Válvula mariposa tipo wafer inoxidable

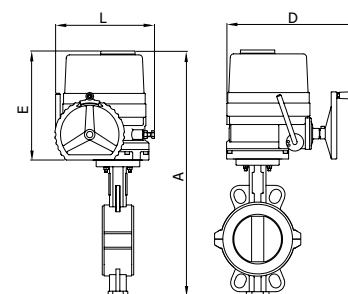
Características de válvula ver art. 2104.  
Servomotor trifásico (3-400 V). Otro voltaje consultar.

### Stainless steel butterfly valve wafer type

Valve characteristics see art. 2104.  
Triphasic servomotor (3-400 V). Other voltage please consult us.

Medida/Size	A	E	L	D
4"	494	220	172	258
5"	565	259	229	338
6"	594	259	229	338
8"	697	288	244	357
10"	787	313	287	380

5634 12 58	4"	GE-010	1,000	-
5634 13 59	5"	GE-015	23,200	-
5634 14 55	6"	GE-025	24,600	-
5634 16 62	8"	GE-050	1,000	-
5634 18 60	10"	GE-110	41,500	-



Ref. 5608



### Válvula mariposa tipo LUG DIN

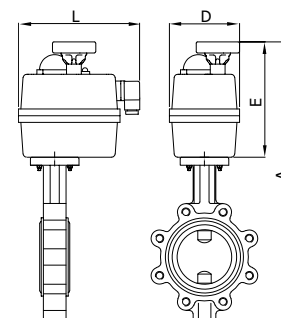
Características de válvula ver art. 2108.  
Especificar tensión de alimentación necesaria.

### Butterfly valve DIN LUG type

Valve characteristics see art. 2108.  
Required voltage must be specified.

Medida/Size	A	E	L	D
2"	436	196	181	110
2 1/2"	449	196	181	110
3"	464	196	181	110
4"	501	196	181	110
5"	539	196	181	110
6"	622	254	235	214
8"	684	254	235	214

5608 09 52	2"	GE-1	6,700	-
5608 10 52	2 1/2"	GE-1	7,300	-
5608 11 52	3"	GE-1	7,600	-
5608 12 48	4"	GE-15	10,050	-
5608 13 48	5"	GE-15	13,300	-
5608 14 53	6"	GE-2	18,500	-
5608 16 54	8"	GE-2+	23,400	-



03 AUTOMATIZACIÓN & CONTROL  
AUTOMATION & CONTROL

Ref. 5608



**Válvula mariposa tipo LUG DIN**

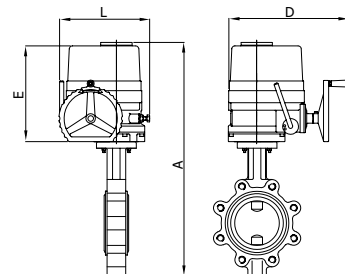
Características de válvula ver art. 2108.  
Servomotor trifásico (3-400 V). Otro voltaje consultar.

**Butterfly valve DIN LUG type**

Valve characteristics see art. 2108.  
Triphasic servomotor (3-400 V). Other voltage please consult us.

Medida/Size	A	E	L	D
5"	563	220	172	258
6"	627	259	229	338
8"	689	259	229	338
10"	799	288	244	357
12"	860	288	244	357

CÓDIGO CODE	MEDIDA SIZE	TIPO ACT. ACT. TYPE	PESO WEIGHT	P.V.P. € PRICE
5608 13 58	5"	GE-010	17,850	-
5608 14 59	6"	GE-015	29,350	-
5608 16 55	8"	GE-025	33,900	-
5608 18 56	10"	GE-035	49,550	-
5608 20 62	12"	GE-050	76,000	-



Ref. 5608A



**Válvula mariposa tipo LUG ANSI**

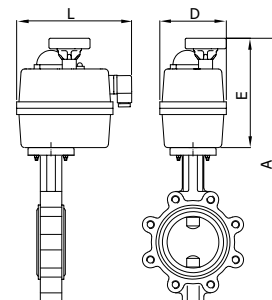
Características de válvula ver art. 2108A.  
Especificar tensión de alimentación necesaria.

**Butterfly valve ANSI LUG type**

Valve characteristics see art. 2108A.  
Required voltage must be specified.

Medida/Size	A	E	L	D
2"	436	196	181	110
2 1/2"	449	196	181	110
3"	464	196	181	110
4"	501	196	181	110
5"	539	196	181	110
6"	622	254	235	214
8"	684	254	235	214

5608A 09 52	2"	GE-1	6,700	-
5608A 10 52	2 1/2"	GE-1	7,300	-
5608A 11 52	3"	GE-1	7,300	-
5608A 12 48	4"	GE-15	11,500	-
5608A 13 48	5"	GE-15	13,300	-
5608A 14 53	6"	GE-2	18,500	-
5608A 16 54	8"	GE-2+	23,400	-



Ref. 5608A



**Válvula mariposa tipo LUG ANSI**

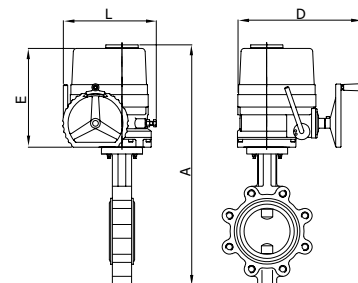
Características de válvula ver art. 2108A.  
Servomotor trifásico (3-400 V). Otro voltaje consultar.

**Butterfly valve ANSI LUG type**

Valve characteristics see art. 2108A.  
Triphasic servomotor (3-400 V). Other voltage please consult us.

Medida/Size	A	E	L	D
5"	563	220	172	258
6"	627	259	229	338
8"	689	259	229	338
10"	799	288	244	357
12"	860	288	244	357
14"	891	313	287	380
16"	959	313	287	380
18"	1209	506	293	368
20"	1209	531	312	380

5608A 13 58	5"	GE-010	17,850	-
5608A 14 59	6"	GE-015	29,350	-
5608A 16 55	8"	GE-025	33,900	-
5608A 18 56	10"	GE-035	49,550	-
5608A 20 62	12"	GE-050	76,000	-
5608A 22 57	14"	GE-080	97,500	-
5608A 24 60	16"	GE-110	126,400	-
5608A 26 64	18"	GE-150	208,000	-
5608A 28 61	20"	GE-210	255,000	-





# EXTENSOR PARA VÁLVULA AUTOMATIZADA - ACTUADOR ELÉCTRICO

## EXTENSION FOR AUTOMATED VALVE - ELECTRIC ACTUATOR



Ref. 5334



### Extensor para válvula automatizada (\*)

(\*) Válvula no incluida (consultar modelo de válvula)

### Extension for automated valve (\*)

(\*) Valve not included (consult the model of the valve)

#### Válvulas roscar - soldar / Threaded - welded valves

Ref.	ART.2015 - 2025 - 2026 - 2027	ART.2040 - 2041
5334 09 050	1/4" - 1/2"	1/4" - 1/2"
5334 11 050	3/4" - 1"	3/4" - 1"
5334 14 050	1 1/4" - 2"	1 1/4" - 2"
5334 17 050	2 1/2" - 4"	2 1/2"

#### Válvulas roscar - soldar / Threaded - welded valves

Ref.	ART.2015 - 2025 - 2026 - 2027	ART.2040 - 2041
5334 14 100	1 1/4" - 2"	1 1/4" - 2"
5334 17 100	2 1/2" - 4"	2 1/2"

#### Válvulas bridas / Flanged valves

Ref.	ART.2118 - 2119 - 2525	ART.2526A - 2528 - 2528A - 2529	ART.2540E - 2541E - 2544 - 2545
5334 09 050	1/2" - 3/4"	1/2" - 3/4"	*****
5334 11 050	1" - 1 1/4"	1"	1"
5334 14 100	1 1/2" - 2"	1 1/4" - 2"	1 1/4" - 2"
5334 17 100	2 1/2" - 4"	2 1/2" - 4"	2 1/2" - 4"

CÓDIGO CODE	MEDIDA SIZE	TIPO ACT. ACT. TYPE	PESO WEIGHT	P.V.P. € PRICE €
L= 50 mm				
5334 09 050	L=50 mm	-	0,270	-
5334 11 050	L= 50 mm	-	0,380	-
5334 14 050	L=50 mm	-	0,530	-
5334 17 050	L=50 mm	-	0,700	-
L= 100 mm				
5334 14 100	L= 100mm	-	0,840	-
5334 17 100	L= 100mm	-	1,100	-

03 AUTOMATIZACIÓN & CONTROL  
AUTOMATION & CONTROL