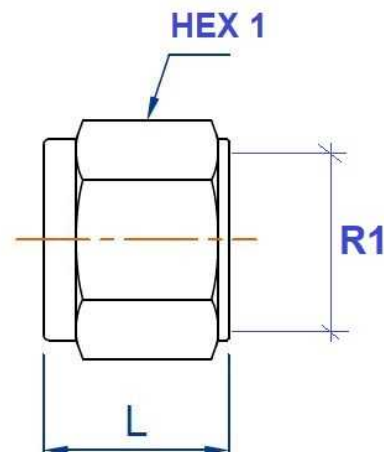


Racor Doble Anillo Trale LOK

Tuercas y anillos

Tuercas para doble anillo

Acero Inoxidable AISI 316-L-1.4404



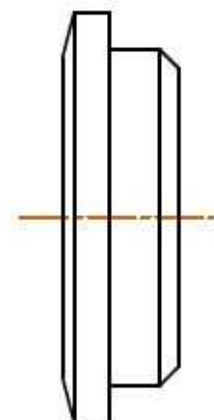
Artículo	R1	ØD1	L	HEX 1
ZKN02	5/16" 20UN	1/8"	11,94	7/16"
ZKN04	7/16" 20UNF	1/4"	12,7	9/16"
ZKN05	3/8" 20 UN	5/16"	13,46	5/8"
ZKN06	9/16" 20UN	3/8"	14,22	11/16"
ZKN08	3/4" 20UNEF	1/2"	17,53	7/8"
ZKN10	7/8" 20 UN	5/8"	17,53	1"
ZKN12	1" 20UNEF	3/4"	17,53	1"3/16
ZKN16	1"5/16 20UN	1"	20,57	1"1/2
ZKN06M	7/16" 20UNF	6	12,7	14
ZKN08M	1/2" 20UNF	8	13,5	16
ZKN10M	5/8" 20 UN	10	15,1	19
ZKN12M	3/4" 20UNEF	12	17,5	22
ZKN14M	7/8" 20 UNEF	14	17,5	25
ZKN15M	7/8" 20 UNEF	15	17,5	25
ZKN16M	7/8" 20UNEF	16	17,5	25
ZKN18M	1" 20UNEF	18	17,5	30
ZKN20M	1"1/8 20UNEF	20	17,5	32
ZKN22M	1"1/8 20UNEF	22	17,5	32
ZKN25M	1"5/16 20UN	25	20,6	38

Racor Doble Anillo Trale LOK

Tuercas y anillos

Anillo posterior

Acero Inoxidable AISI 316-L-1.4404



Artículo	ØD1
ZKAP02	1/8"
ZKAP04	1/4"
ZKAP05	5/16"
ZKAP06	3/8"
ZKAP08	1/2"
ZKAP10	5/8"
ZKAP12	3/4"
ZKAP16	1"
ZKAP06M	6
ZKAP08M	8
ZKAP10M	10
ZKAP12M	12
ZKAP14M	14
ZKAP15M	15
ZKAP16M	16
ZKAP18M	18
ZKAP20M	20
ZKAP22M	22
ZKAP25M	25

Racor Doble Anillo Trale LOK

Tuercas y anillos

Anillo frontal

Acero Inoxidable AISI 316-L-1.4404



Artículo	ØD1
ZKAF02	1/8"
ZKAF04	1/4"
ZKAF05	5/16"
ZKAF06	3/8"
ZKAF08	1/2"
ZKAF10	5/8"
ZKAF12	3/4"
ZKAF16	1"
ZKAF06M	6
ZKAF08M	8
ZKAF10M	10
ZKAF12M	12
ZKAF14M	14
ZKAF15M	15
ZKAF16M	16
ZKAF18M	18
ZKAF20M	20
ZKAF22M	22
ZKAF25M	25