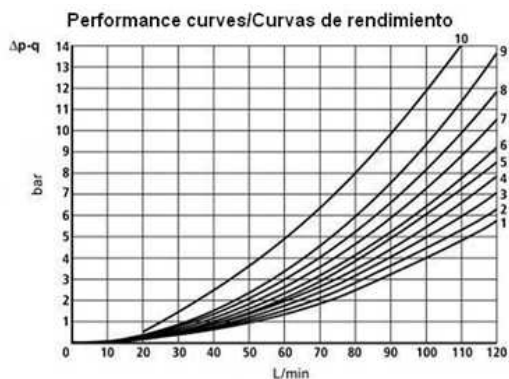
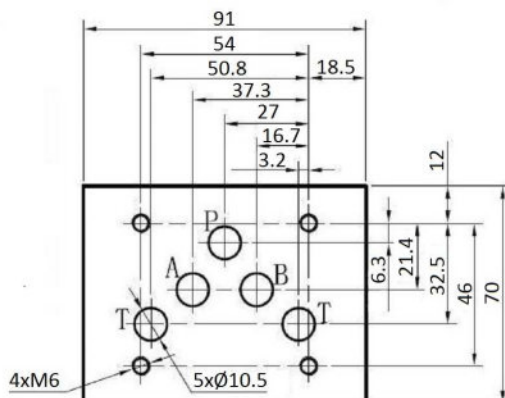
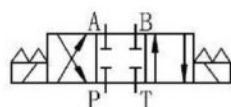


Electroválvulas

Electroválvulas NG10

## Electroválvula Direccional NG10 Corredera nº1

Página: 1/1



Spool / Corredera	Flow path/ Trayectoria flujo			
	P-A	P-B	A-T	B-T
1	1	1	4	4
2	3	3	6	7
3	1	1	6	7
6	1	1	3	3
3A	-	1	6	-
41A	3	3	-	-
51A	3	3	4	5

**Conectores Eléctricos** con LED

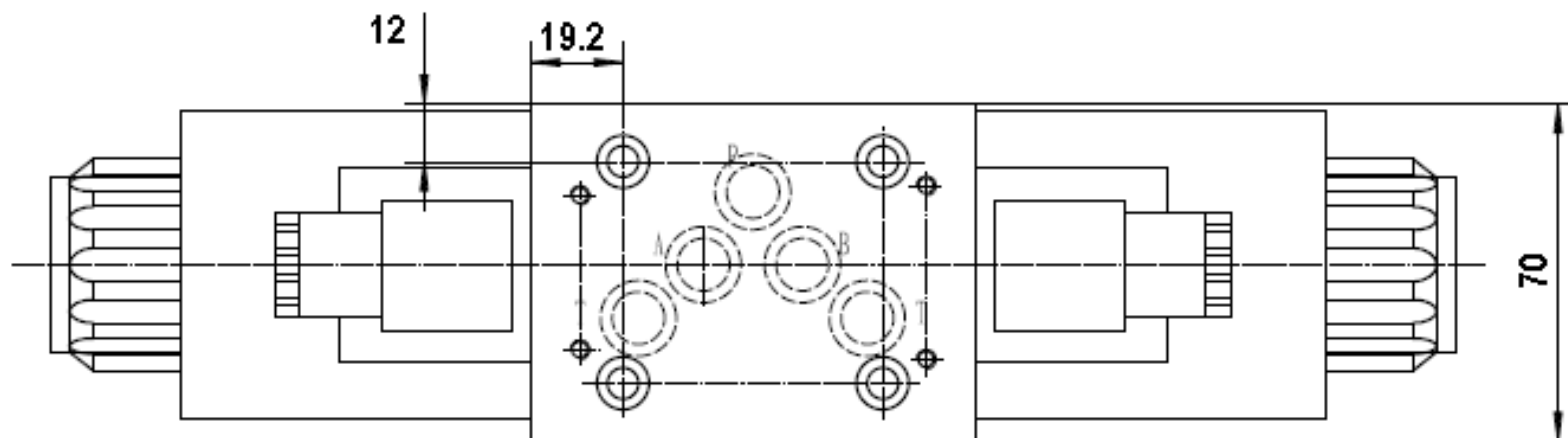
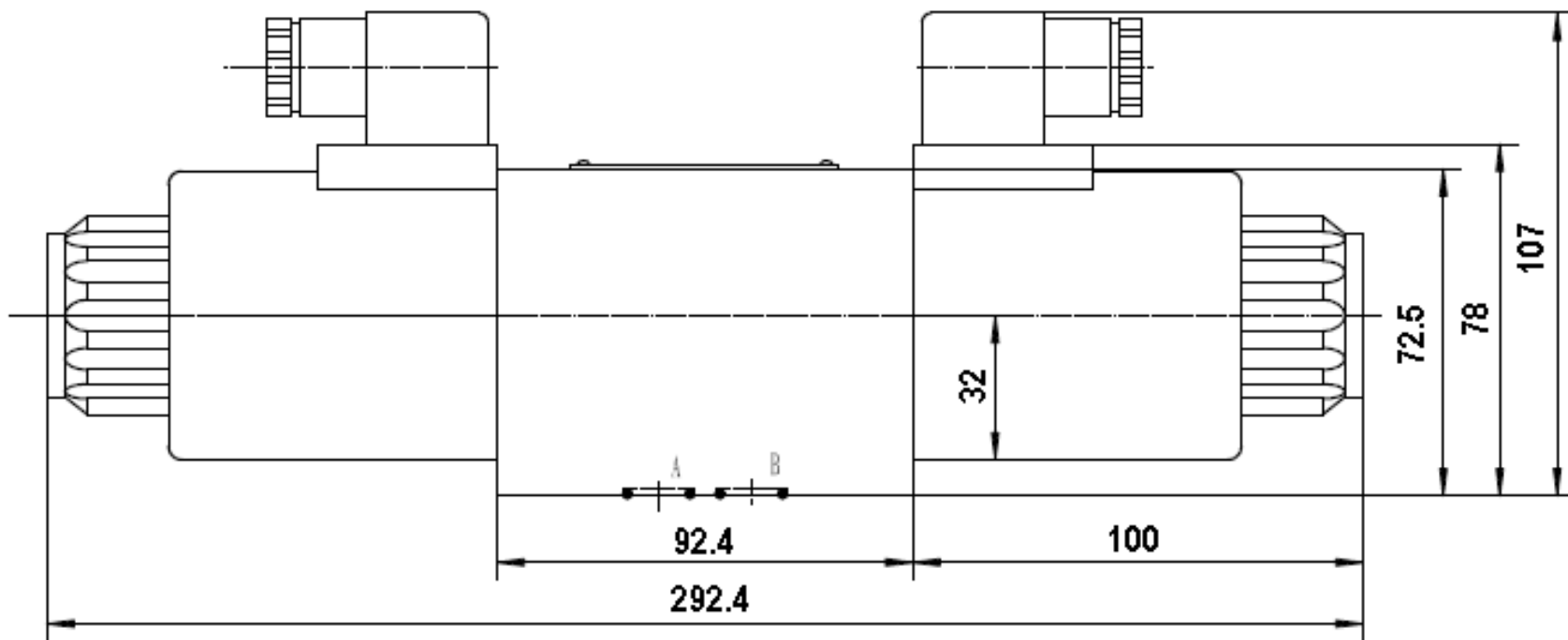
**Juego 4 Tornillos Incluido** M6 x 40

**Presión Máxima**  
 · A, B, P: 315 bar  
 · T: 160 bar

Artículo	Tamaño	Voltaje (V)	Caudal máx. (l/min)	Pres. máx. (bar)	f (Hz)	Ø núcleo
KVNG10-1-12CC H	NG-10	12 VDC	120	315		31
KVNG10-1-24CC H	NG-10	24 VDC	120	315		31
KVNG10-1-110CA H	NG-10	110 VAC	120	315	50	31
KVNG10-1-220CA H	NG-10	220 VAC	120	315	50	31

\*\*\* Revisar PDF adjunto \*\*\*

KVNG10-1-12CC H, KVNG10-1-24CC H, KVNG10-1-220CA H ---> Nº lote: 746-....

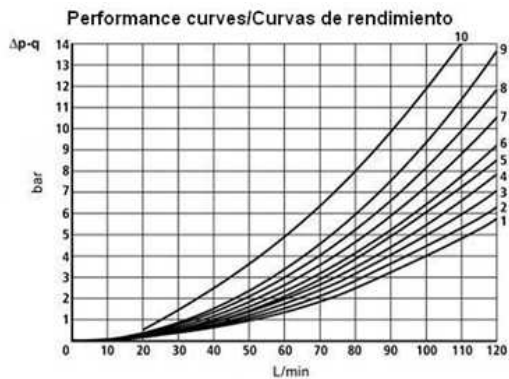
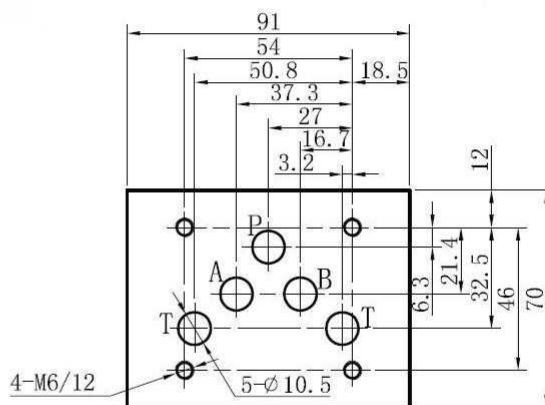
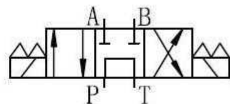


Electroválvulas

Electroválvulas NG10

## Electroválvula Direccional NG10 Corredera nº2

Página: 1/1



Spool / Corredera	Flow path / Trayectoria flujo			
	P-A	P-B	A-T	B-T
1	1	1	4	4
2	3	3	6	7
3	1	1	6	7
6	1	1	3	3
3A	-	1	6	-
41A	3	3	-	-
51A	3	3	4	5

**Conectores Eléctricos** con LED

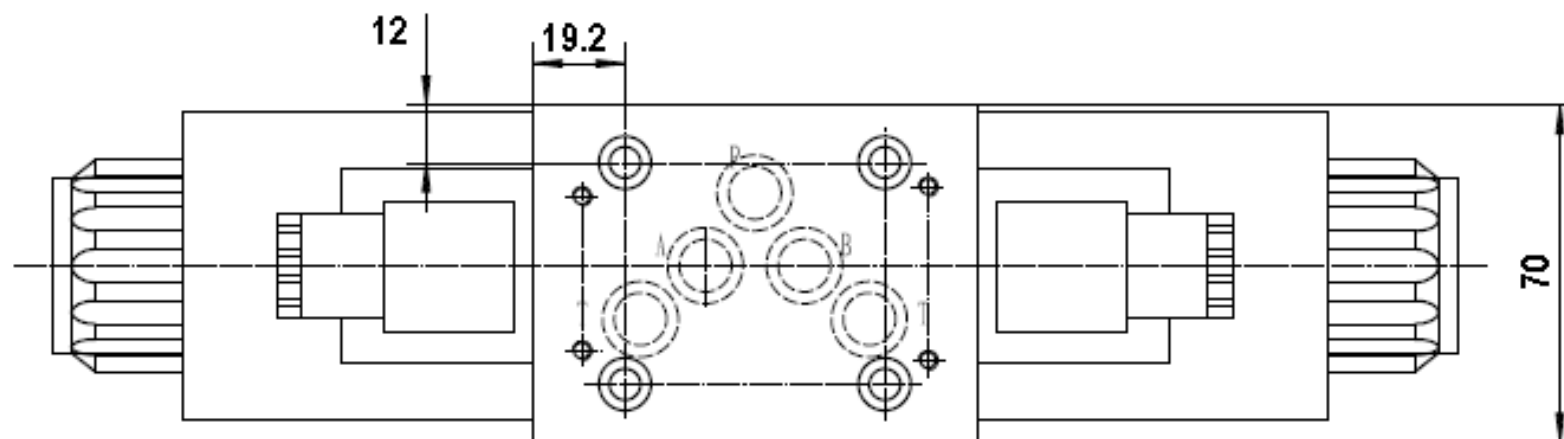
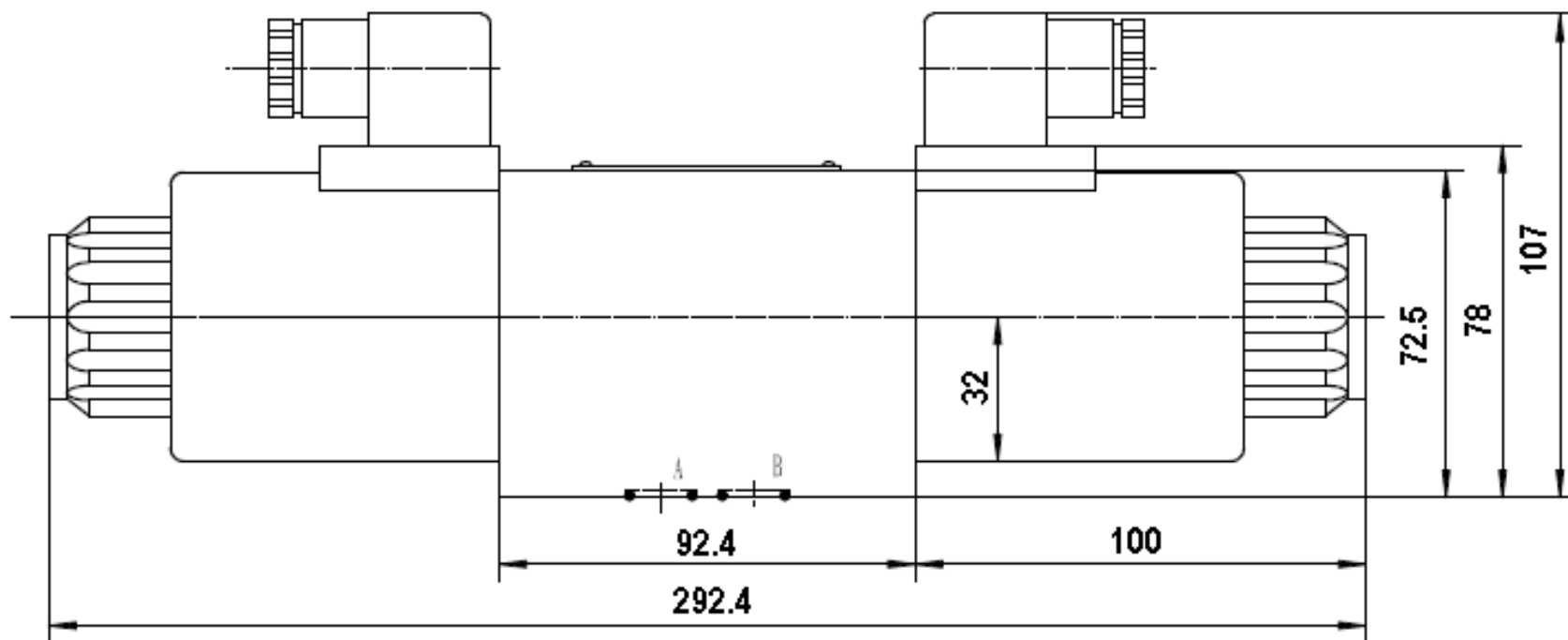
**Juego 4 Tornillos Incluido** M6 x 40

**Presión Máxima**  
 · A, B, P: 315 bar  
 · T: 160 bar

Artículo	Tamaño	Voltaje (V)	Caudal máx. (l/min)	Pres. máx. (bar)	f (Hz)	Ø núcleo
KVNG10-2-12CC H	NG-10	12 VDC	120	315		31
KVNG10-2-24CC H	NG-10	24 VDC	120	315		31
KVNG10-2-110CA H	NG-10	110 VAC	120	315	50	31
KVNG10-2-220CA H	NG-10	220 VAC	120	315	50	31

\*\*\* Revisar PDF adjunto \*\*\*

KVNG10-2-12CC H, KVNG10-2-24CC H, KVNG10-2-110CA H, KVNG10-2-220CA H --> Nº lote: 746-....

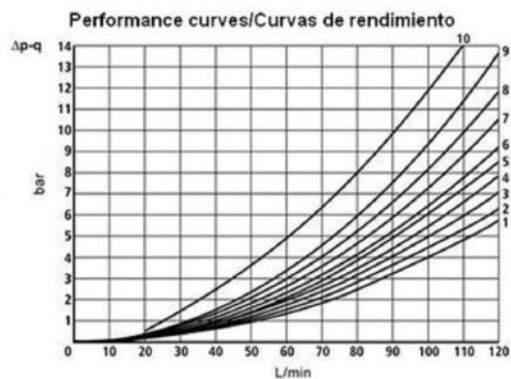
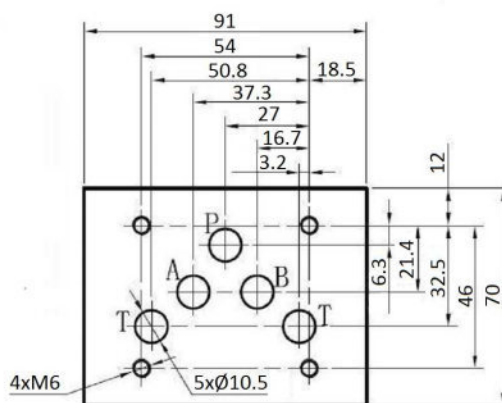
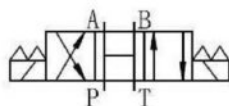


Electroválvulas

Electroválvulas NG10

## Electroválvula Direccional NG10 Corredera nº3

Página: 1/1



Spool / Corredera	Flow path / Trayectoria flujo			
	P-A	P-B	A-T	B-T
1	1	1	4	4
2	3	3	6	7
3	1	1	6	7
6	1	1	3	3
3A	-	1	6	-
41A	3	3	-	-
51A	3	3	4	5

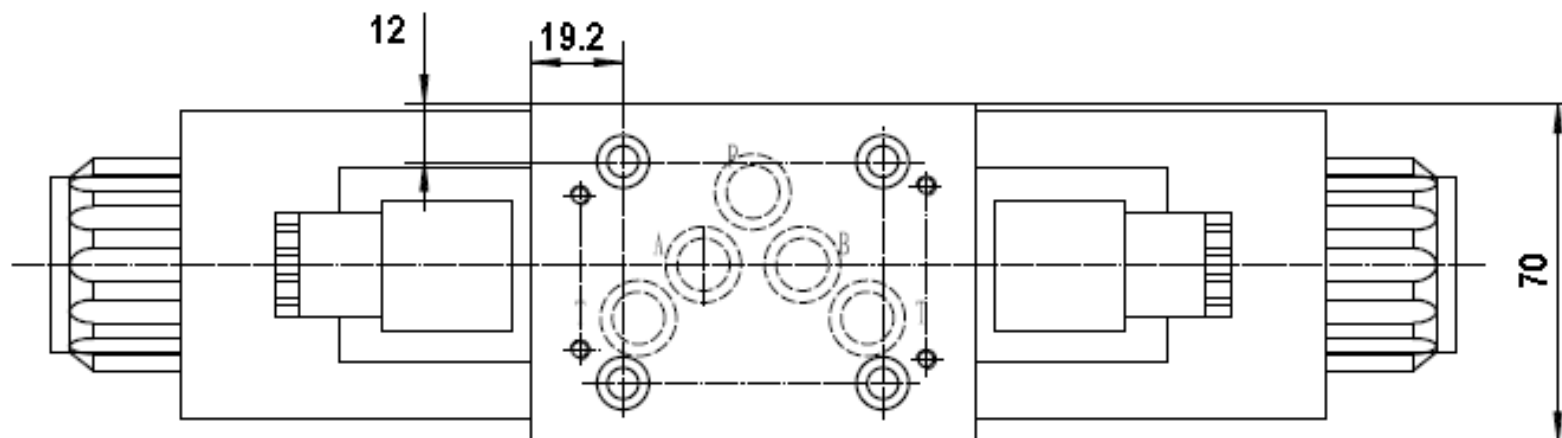
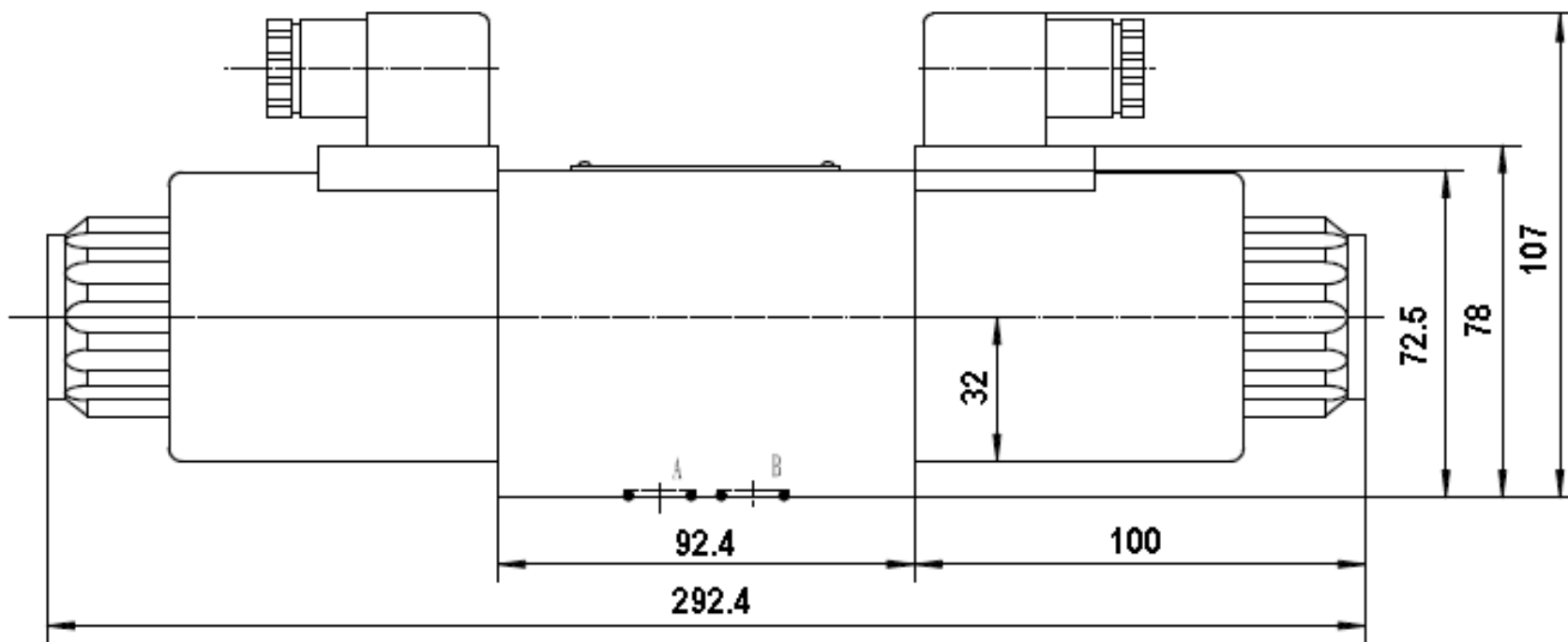
**Conectores Eléctricos** con LED

**Juego 4 Tornillos Incluido** M6 x 40

**Presión Máxima**  
 · A, B, P: 315 bar  
 · T: 160 bar

Artículo	Tamaño	Voltaje (V)	Caudal máx. (l/min)	Pres. máx. (bar)	f (Hz)	Ø núcleo
KVNG10-3-12CC H	NG-10	12 VDC	120	315		31,4
KVNG10-3-24CC H	NG-10	24 VDC	120	315		31
KVNG10-3-110CA H	NG-10	110 VAC	120	315	50	31,4
KVNG10-3-220CA H	NG-10	220 VAC	120	315	50	31

\*\*\* Revisar PDF adjunto \*\*\*

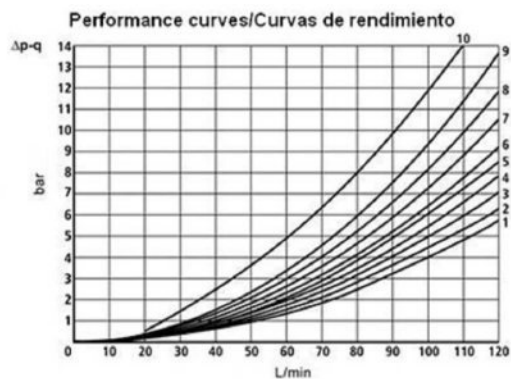
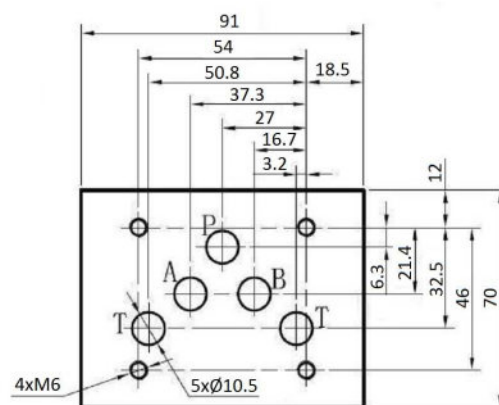
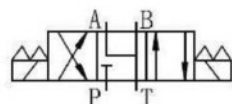


Electroválvulas

Electroválvulas NG10

## Electroválvula Direccional NG10 Corredera nº6

Página: 1/1



Spool / Corredera	Flow path / Trayectoria flujo			
	P-A	P-B	A-T	B-T
1	1	1	4	4
2	3	3	6	7
3	1	1	6	7
6	1	1	3	3
3A	-	1	6	-
41A	3	3	-	-
51A	3	3	4	5

**Conectores Eléctricos** con LED

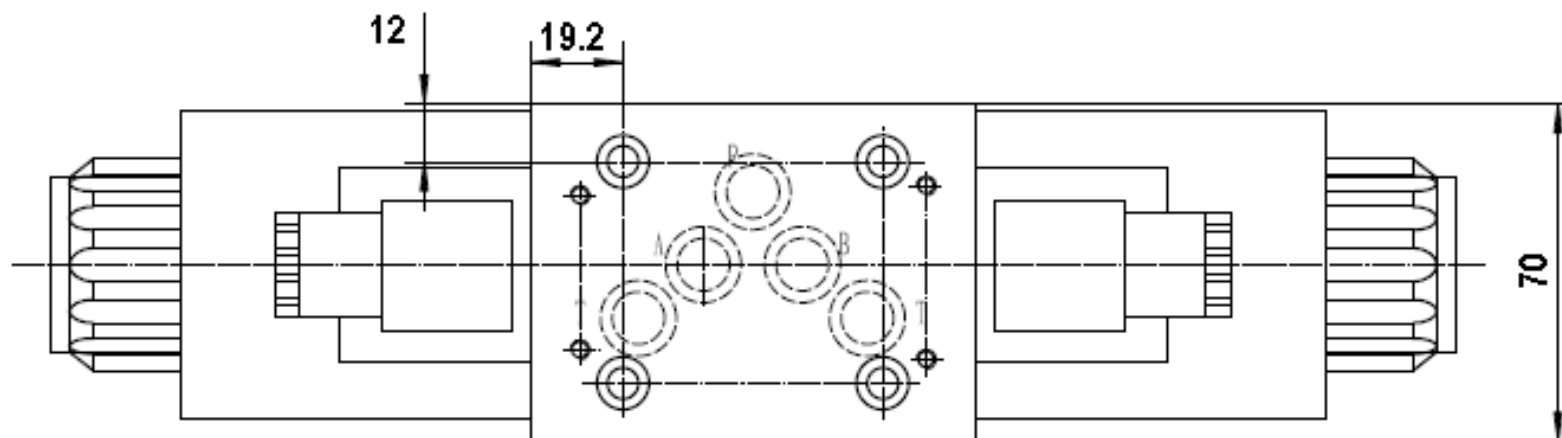
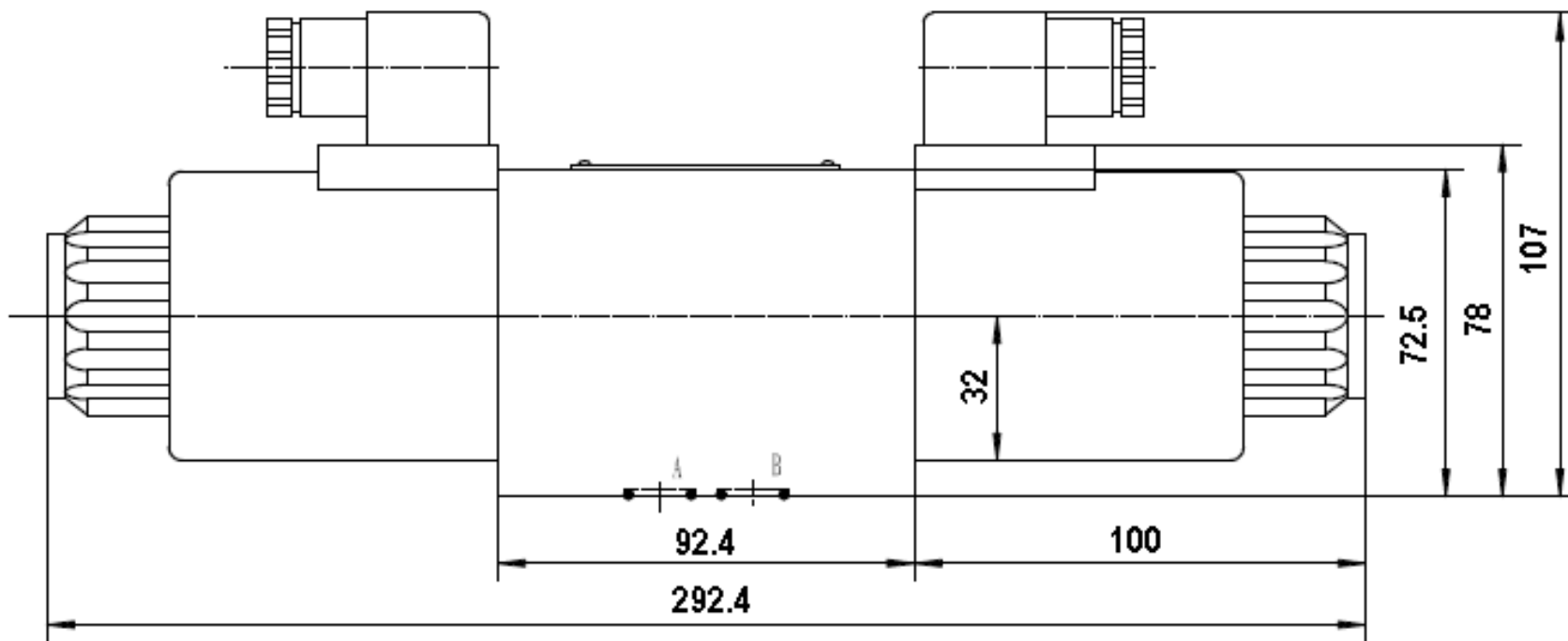
**Juego 4 Tornillos Incluido** M6 x 40

**Presión Máxima**  
 · A, B, P: 315 bar  
 · T: 160 bar

Artículo	Tamaño	Voltaje (V)	Caudal máx. (l/min)	Pres. máx. (bar)	f (Hz)	Ø núcleo
KVNG10-6-12CC H	NG-10	12 VDC	120	315		31
KVNG10-6-24CC H	NG-10	24 VDC	120	315		31
KVNG10-6-110CA H	NG-10	110 VAC	120	315	50	31
KVNG10-6-220CA H	NG-10	220 VAC	120	315	50	31

\*\*\* Revisar PDF adjunto \*\*\*

KVNG10-6-12CC H, KVNG10-6-110CA H, KVNG10-6-220CA H --> Nº lote: 746-....



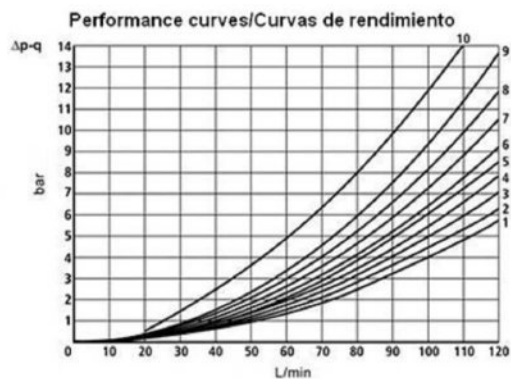
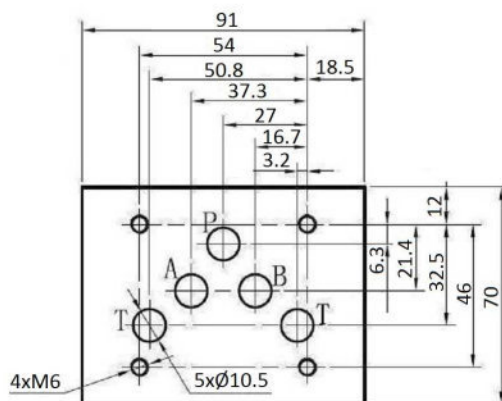


Electroválvulas

Electroválvulas NG10

## Electroválvula Direccional NG10 Corredera nº3A

Página: 1/1



Spool / Corredera	Flow path / Trayectoria flujo			
	P-A	P-B	A-T	B-T
1	1	1	4	4
2	3	3	6	7
3	1	1	6	7
6	1	1	3	3
3A	-	1	6	-
41A	3	3	-	-
51A	3	3	4	5

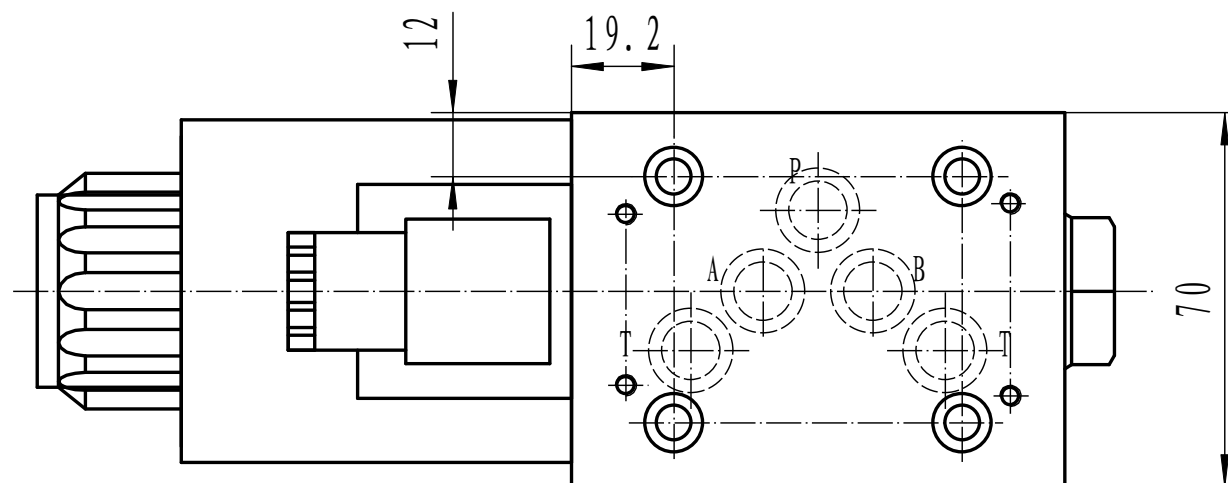
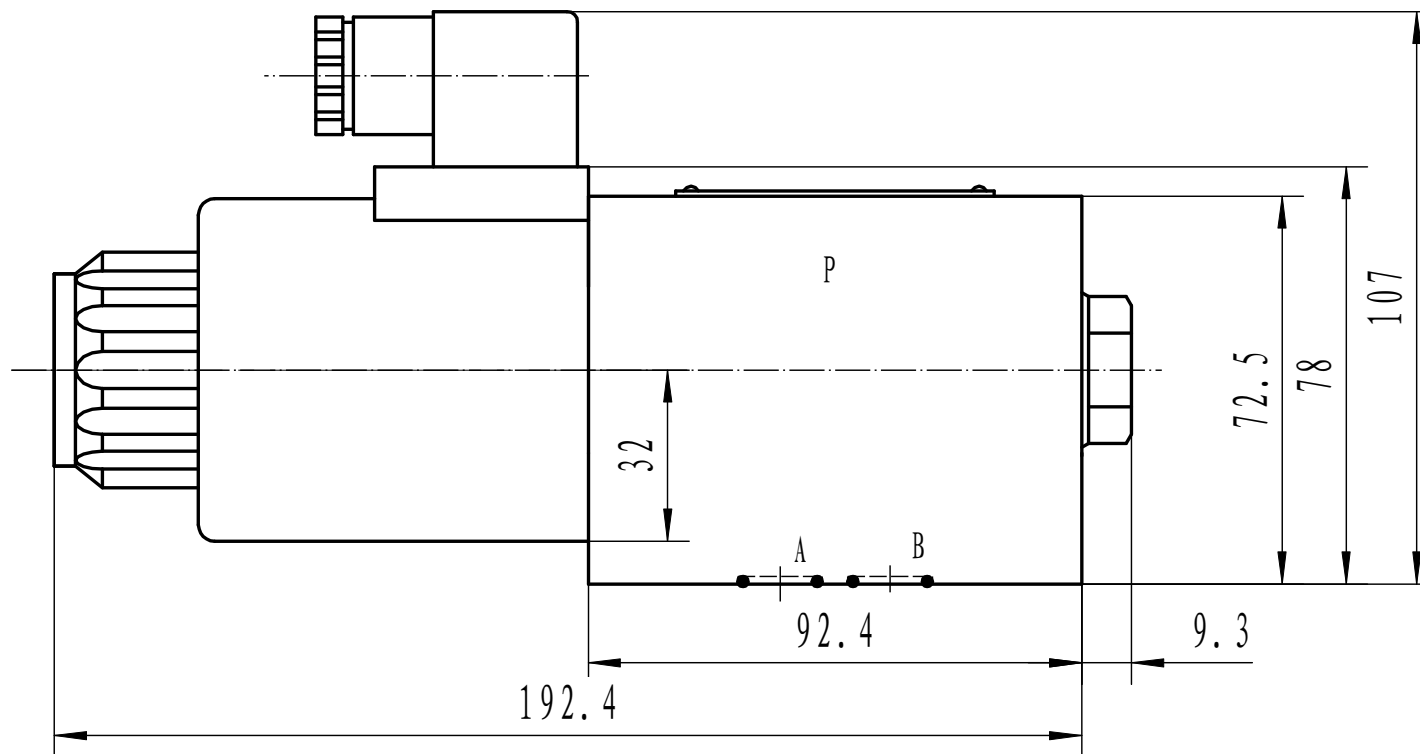
**Conectores Eléctricos** con LED

**Juego 4 Tornillos Incluido** M6 x 40

**Presión Máxima**  
 · A, B, P: 315 bar  
 · T: 160 bar

Artículo	Tamaño	Voltaje (V)	Caudal máx. (l/min)	Pres. máx. (bar)	f (Hz)	Ø núcleo
KVNG10-3A-12CC H	NG-10	12 VDC	120	315		31
KVNG10-3A-24CC H	NG-10	24 VDC	120	315		31
KVNG10-3A-110CA H	NG-10	110 VAC	120	315	50	31
KVNG10-3A-220CA H	NG-10	220 VAC	120	315	50	31

\*\*\* Revisar PDF adjunto \*\*\*  
 KVNG10-3A-12CC H --> Nº lote: 746-....

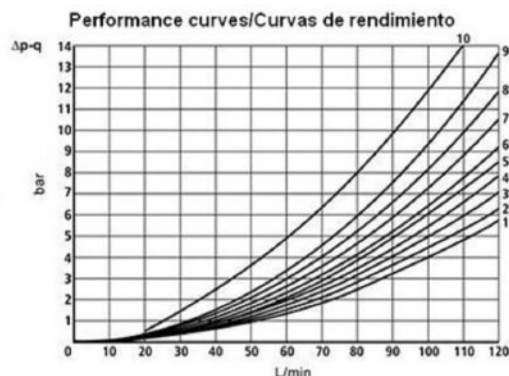
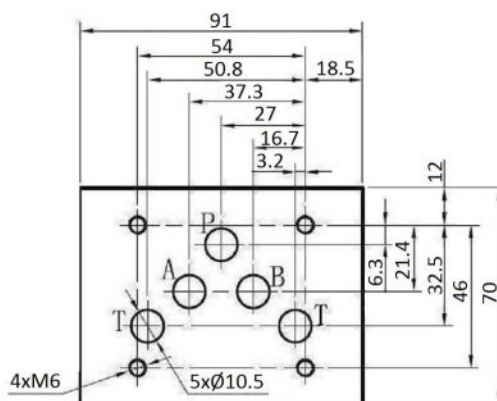
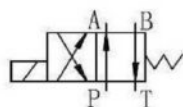


Electroválvulas

Electroválvulas NG10

## Electroválvula Direccional NG10 Corredera nº51A

Página: 1/1



Spool / Corredera	Flow pathy / Trayectoria flujo			
	P-A	P-B	A-T	B-T
1	1	1	4	4
2	3	3	6	7
3	1	1	6	7
6	1	1	3	3
3A	-	1	6	-
41A	3	3	-	-
51A	3	3	4	5

**Conectores Eléctricos** con LED

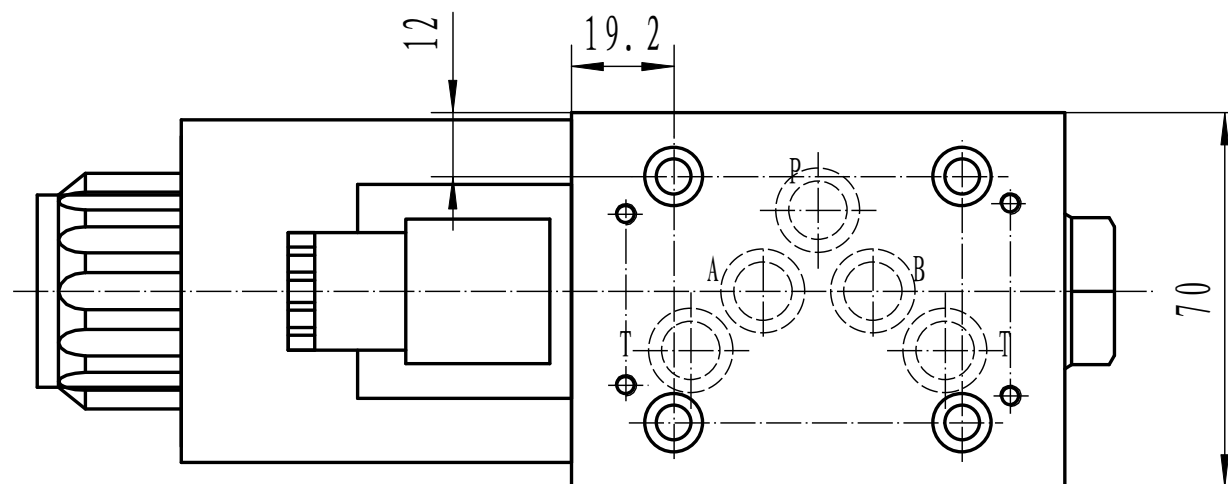
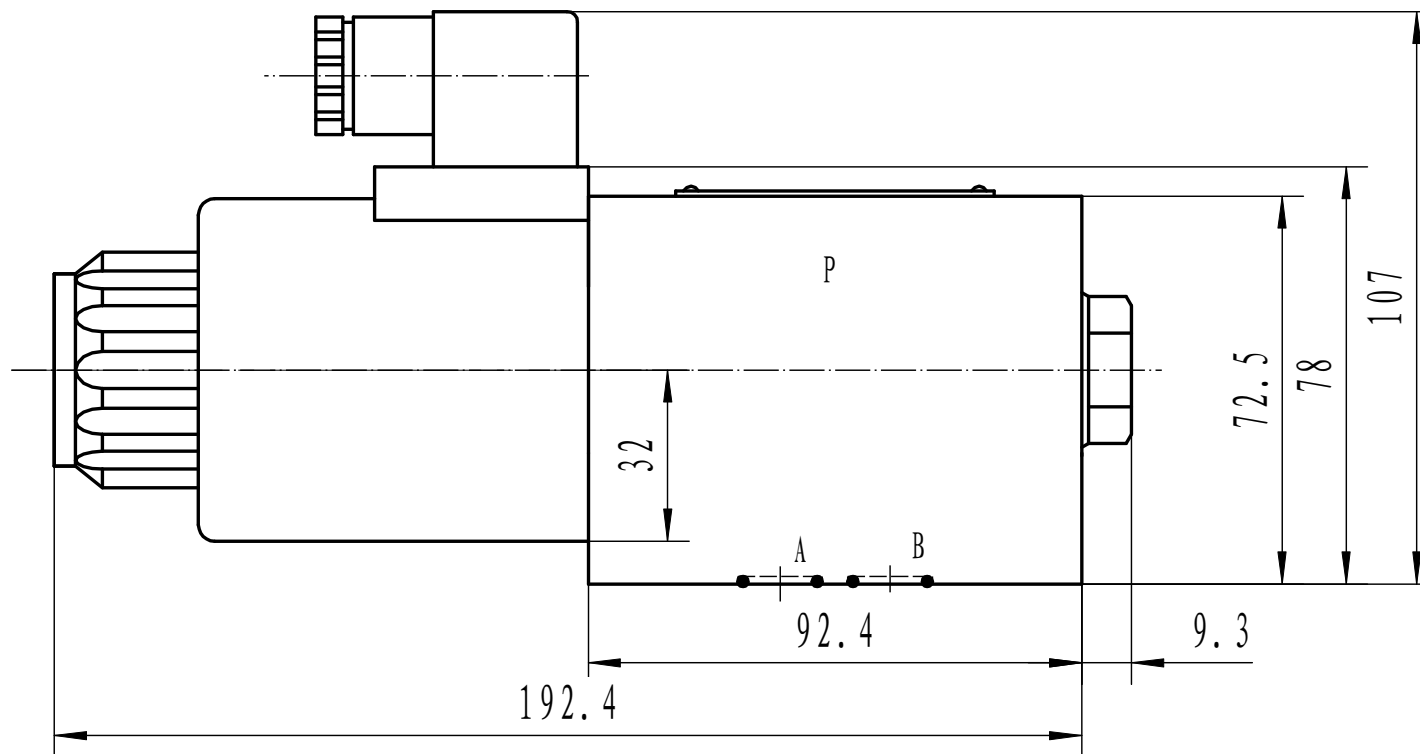
**Juego 4 Tornillos Incluido** M6 x 40

**Presión Máxima**  
 · A, B, P: 315 bar  
 · T: 160 bar

Artículo	Tamaño	Voltaje (V)	Caudal máx. (l/min)	Pres. máx. (bar)	f (Hz)	Ø núcleo
<b>KVNG10-51A-12CC H</b>	NG-10	12 VDC	120	315		31,4
<b>KVNG10-51A-24CC H</b>	NG-10	24 VDC	120	315		31
<b>KVNG10-51A-110CA H</b>	NG-10	110 VAC	120	315	50	31,4
<b>KVNG10-51A-220CA H</b>	NG-10	220 VAC	120	315	50	31

\*\*\* Revisar PDF adjunto \*\*\*

KVNG10-51A-24CC H, KVNG10-51A-220CA H --> Nº lote: 746-...

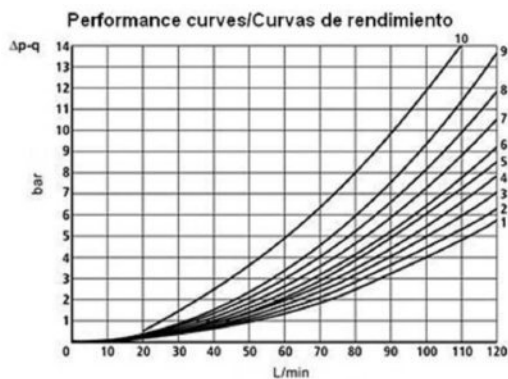
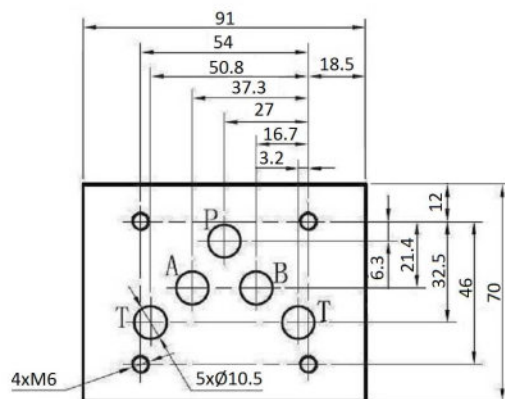
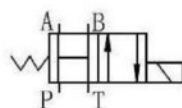


Electroválvulas

Electroválvulas NG10

## Electroválvula Direccional NG10 Corredera nº3B

Página: 1/1



Spool / Corredera	Flow path / Trayectoria flujo			
	P-A	P-B	A-T	B-T
1	1	1	4	4
2	3	3	6	7
3	1	1	6	7
6	1	1	3	3
3A	-	1	6	-
41A	3	3	-	-
51A	3	3	4	5

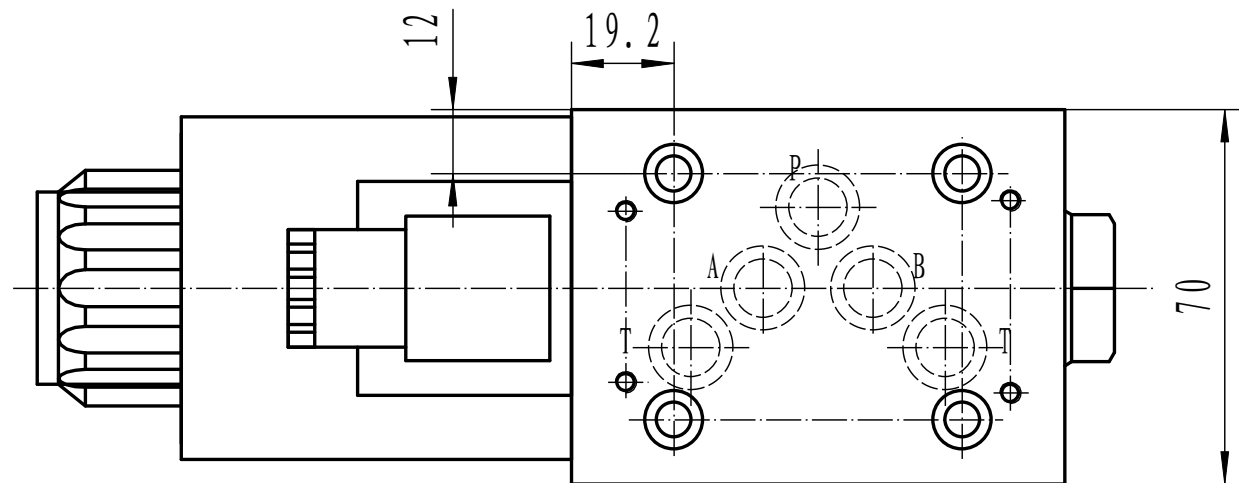
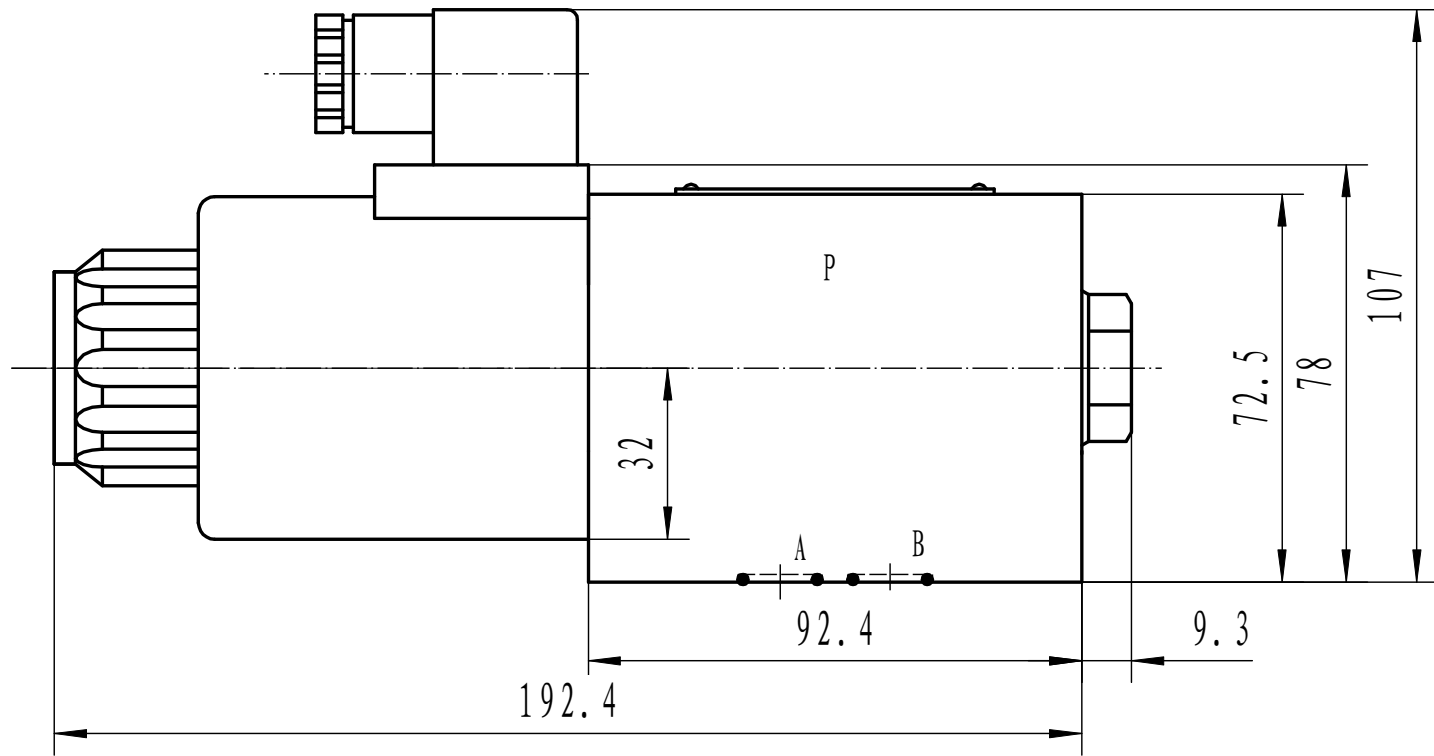
**Conectores Eléctricos** con LED

**Juego 4 Tornillos Incluido** M6 x 40

**Presión Máxima**  
 · A, B, P: 315 bar  
 · T: 160 bar

Artículo	Tamaño	Voltaje (V)	Caudal máx. (l/min)	Pres. max. (bar)	Ø núcleo
KVNG10-3B-12CC H	NG-10	12 VDC	120	315	31.4
KVNG10-3B-24CC H	NG-10	24 VDC	120	315	31,4

\*\*\* Revisar PDF adjunto \*\*\*

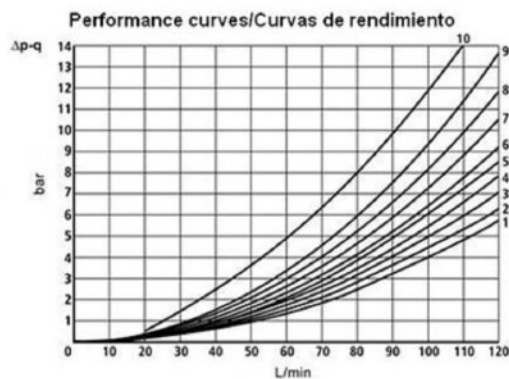
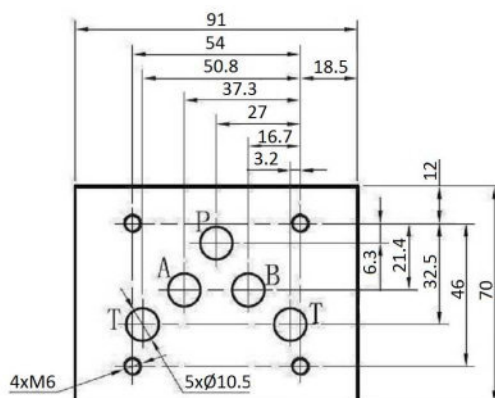
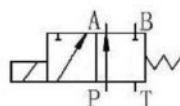


Electroválvulas

Electroválvulas NG10

## Electroválvula Direccional NG10 Corredera nº41A

Página: 1/1



Spool / Corredera	Flow path / Trayectoria flujo			
	P-A	P-B	A-T	B-T
1	1	1	4	4
2	3	3	6	7
3	1	1	6	7
6	1	1	3	3
3A	-	1	6	-
41A	3	3	-	-
51A	3	3	4	5

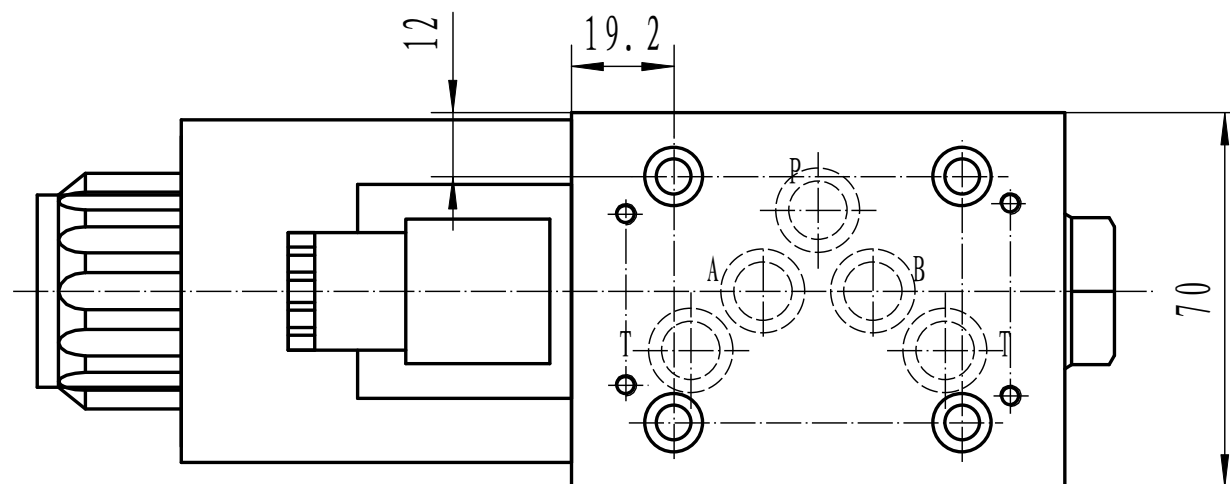
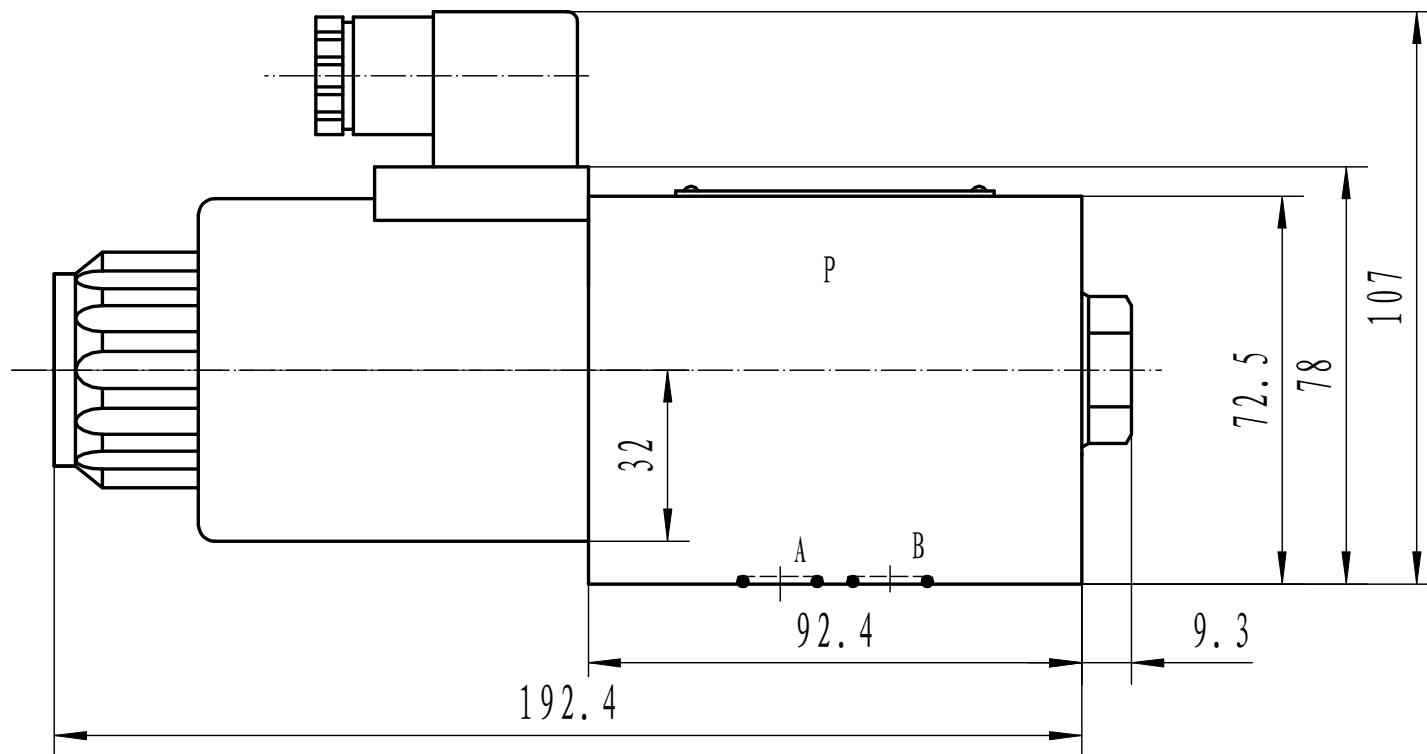
**Conectores Eléctricos** con LED

**Juego 4 Tornillos Incluido** M6 x 40

**Presión Máxima**  
 · A, B, P: 315 bar  
 · T: 160 bar

Artículo	Tamaño	Voltaje (V)	Caudal máx. (l/min)	Pres. máx. (bar)	f (Hz)	Ø núcleo
<b>KVNG10-41A-12CC H</b>	NG-10	12 VDC	120	315		31.4
<b>KVNG10-41A-24CC H</b>	NG-10	24 VDC	120	315		31
<b>KVNG10-41A-220CA H</b>	NG-10	220 VAC	120	315	50	31.4

\*\*\* Revisar PDF adjunto \*\*\*





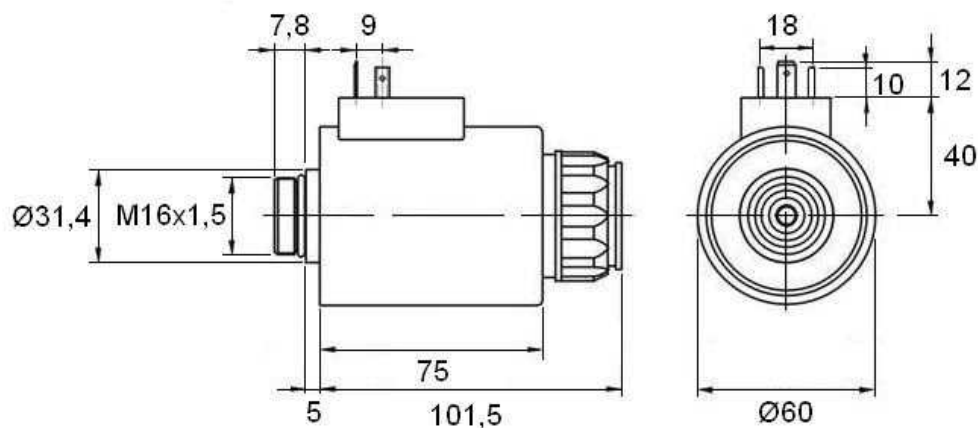
Electroválvulas

Electroválvulas NG10

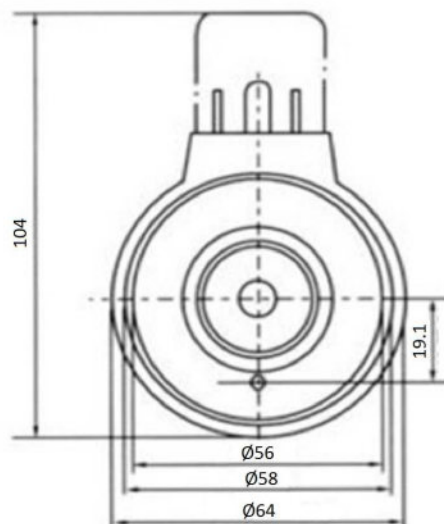
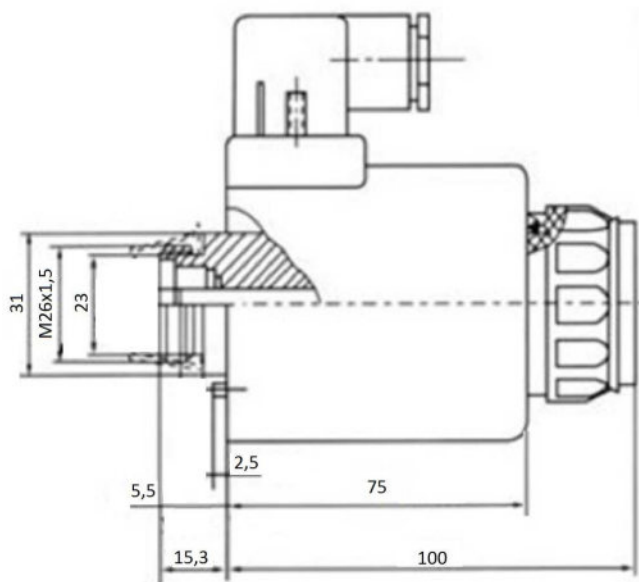
**Bobinas NG10**

Página: 1/2

## MR-10- ... H:



## MR-10- ..... H 1:



**Potencia Consumida**  $\leq 37$  W

**Clase de Aislamiento** F

**Presión de Trabajo** 210 bar

**ED 100% (servicio continuo)**

**Clase IP** IP 65

**TrΔle**®**FLUIDAL**

Electroválvulas

Electroválvulas NG10

**Bobinas NG10****Página: 2/2**

Artículo	Tamaño	Voltaje (V)	f (Hz)	Ø núcleo
<b>MR-10-12CC H</b>	NG-10	12 VDC		31,4mm
<b>MR-10-24CC H</b>	NG-10	24 VDC		31,4mm
<b>MR-10-110AC H</b>	NG-10	110 VAC	50	31,4mm
<b>MR-10-220AC H</b>	NG-10	220 VAC	50	31,4mm
<b>MR-10-12CC H 1</b>	NG-10	12 VDC		31mm
<b>MR-10-24CC H 1</b>	NG-10	24 VDC		31mm
<b>MR-10-110CA H 1</b>	NG-10	110 VAC	50	31mm
<b>MR-10-220CA H 1</b>	NG-10	220 VAC	50	31mm
<b>MR-10-48CC H 1</b>	NG-10	48 VDC		31mm
<b>MR-10-12060CA H</b>	NG-10	120VAC	60	